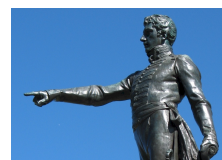


e-Gazette No. 023 - February, 2017.

If this email doesn't look right,  
then:[View this email in your browser](#)

## In this e-Gazette....

- [COME CLEAN ON PRIVATISATION PLANS -CHALLENGE ISSUED](#)
- [WHICH IS YOUR FAVOURITE PARK? BECOME ITS 'AMBASSADOR'](#)
- [SA MUSEUM SET TO "DOUBLE IN SIZE"](#)
- [GOING UNDERGROUND IN KANGATILLA \(PARK 4\)](#)
- [WHAT'S ON IN THE PARK LANDS OVER THE NEXT FEW WEEKS](#)
- [15 KILOMETRES OF FENCES KEEPING YOU OUT](#)
- [A 'SOCIAL ENTERPRISE' COMMUNITY GARDEN?](#)
- [BRIEFLY, IN OTHER NEWS...](#)
- [PHOTOS OF THE DAY - RECENT HIGHLIGHTS](#)



### COME CLEAN ON PRIVATISATION PLANS -CHALLENGE ISSUED



#### **NEWS RELEASE**

The State Government and the Adelaide City Council have been challenged to come clean on the full extent of proposed privatisation of the Adelaide Park Lands.

The Adelaide Park Lands Preservation Association wants a map prepared – and published – showing all the areas that have been licensed and leased or will be if current negotiations come to fruition.

“This challenge is unlikely to be accepted, however, because of the shocking reality it would

reveal,” said vice president Damien Mugavin.

“Some very privileged and favoured friends of government have their covetous eyes, right now, on taking over huge areas of the Park Lands for private sports and function venues. The list is amazing and daunting, yet these organisations are being openly encouraged.

“Many of these proposals include grand stands, function rooms, car parks, reception venues, multi-storey sports facility buildings, perimeter fencing and, most importantly, long-term exclusion of the public from extensive areas of the Park Lands, in the form of 42-year leases and licences.

“Effectively, this is privatisation of the Adelaide Park Lands.”

Mr Mugavin, a landscape architect and former member of the Adelaide Parklands Authority, said he was aware of proposals from sporting groups, schools and universities involving more than a dozen separate areas of the Park Lands.

See our reports on some of these recent proposals in our recent *e-Gazettes* of [November 2016](#) and [December 2016](#).

“These proposals are not for the use of the general community, nor for casual use by nearby residents,” he said. “On the contrary, in many instances small informal and amateur sports groups would be, and in some cases already are, being pushed aside to accommodate these proposals.

“The licence agreements with Council allow the licence holder to prevent the general public from accessing the areas for most of the time. Not even basic facilities such as public toilets, barbecues and drinking fountains are provided.”

Mr Mugavin said he had been told about one lease holder threatening to call police to remove local workers who were simply playing a casual game of soccer in the Park Lands.

**If this makes you see red, then take action!**  
<http://www.adelaide-parklands.asn.au/take-action/>

**WHICH IS YOUR FAVOURITE PARK? BECOME ITS 'AMBASSADOR'**



We know you care about the Adelaide Park Lands in total, but we suspect that you care just a little bit more about your favourite PART of the Park Lands.

Whether it's the dog park in [Ngampana Yarta \(Park 5\)](#); the Himeji Gardens in [Wita Wirra \(Park 18\)](#) the North Adelaide Golf Course in [Pirltawardli \(Park 1\)](#) or some other feature – nearly everyone has a favourite spot or two.

It's only natural to feel a bit more protective about your patch than you might be about other spots. If that's true for you, then do something about it! You now have a chance to be the public eyes, ears and voice of "your" patch.

APPA wants to appoint 36 separate Park Ambassadors – [one for each Park and square](#). Just nominate your favourite Park or Parks (or a Square) that you regularly go to, and you can become the APPA "go to" person for that place. Since you already love "your" Park, your role will be easy. You'll be asked to:

- have your name and contact details listed on the APPA website as the Ambassador for "your" park;
- visit once a month and report (through the *e-Gazette* editor) on anything good or bad (maybe just the changing of the seasons) that's noticeable in "your" Park;
- take photos of "your" Park – and submit the best (just one per month) for publication as APPA's *Photo of the Day* soon afterwards;
- just once per year, offer to take others on a scheduled walking tour of "your" park, pointing out highlights.





To get appointed as an APPA Park Ambassador, you need only to be an APPA member (if you aren't already) so that we know you'll support our Objectives.

We'll get you an official APPA Park Ambassador T-shirt (pr polo shirt) like this one. You can share the role with a family member or friend, if you like.

It's likely that the position of 'Park Ambassador' for each of the most popular Parks will be taken up quickly, so don't spend too long thinking about it.

**Submit your interest to [secretary@adelaide-parklands.asn.au](mailto:secretary@adelaide-parklands.asn.au) fairly promptly, nominating your favourite Park or Parks.** If there's more nominees than Parks, the APPA Committee will decide who to appoint, but we'll try to match you with one of your favourites.

Can't decide which Park's your favourite? Check out the options on our web site: [www.adelaide-parklands.asn.au/gallery](http://www.adelaide-parklands.asn.au/gallery)

We'll keep you up-to-date with the appointment of Park Ambassadors in next month's e-Gazette.

### SA MUSEUM SET TO "DOUBLE IN SIZE"



The cultural institutions along North Terrace are not often mentioned in discussions about the Adelaide Park Lands.

Although they do stand on land that was originally part of the Adelaide Park Lands, APPA does not campaign for their removal. Old Parliament House, Parliament House, Government House, the State Library and the Art Gallery of SA, along with the old Barracks behind the Museum were part of the 'Government Reserve' first removed from the Park Lands in 1837.

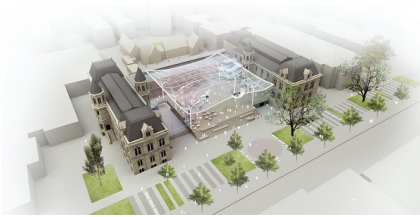
APPA is far more concerned with recent and continuing Government attacks on Park Lands, to hand them over for function centres, restaurants, storage facilities, infrastructure, other commercial and even residential use, including on Festival Plaza, Elder Park, the old RAH site and other locations.

Nevertheless, we were very surprised to learn that the SA Museum (according to its own publicity) is planning to "double in size" .

The Museum has released artist's drawings suggesting that the expansion will be a glass enclosure of the forecourt, and an expansion of the basement. However, the Museum acknowledges that "the design of the redevelopment has yet to be finalised and current illustrations are only indications of what a transformation of the Museum might look like."

It appears the Museum is trying to gain public support for its expansion with a series of loaded questions in a survey. The survey focuses only on the Museum, its collections and displays, with no mention of any public open space that might be lost in any re-development.

APPA is guessing that the Museum survey is an attempt to get public support for a State Government budget bid.



An artist's impression (NOT a plan!) of a possible enclosed SA Museum forecourt.

#### GOING UNDERGROUND IN KANGATILLA (PARK 4)



Few South Australians would ever have seen this view of the Adelaide Park Lands.

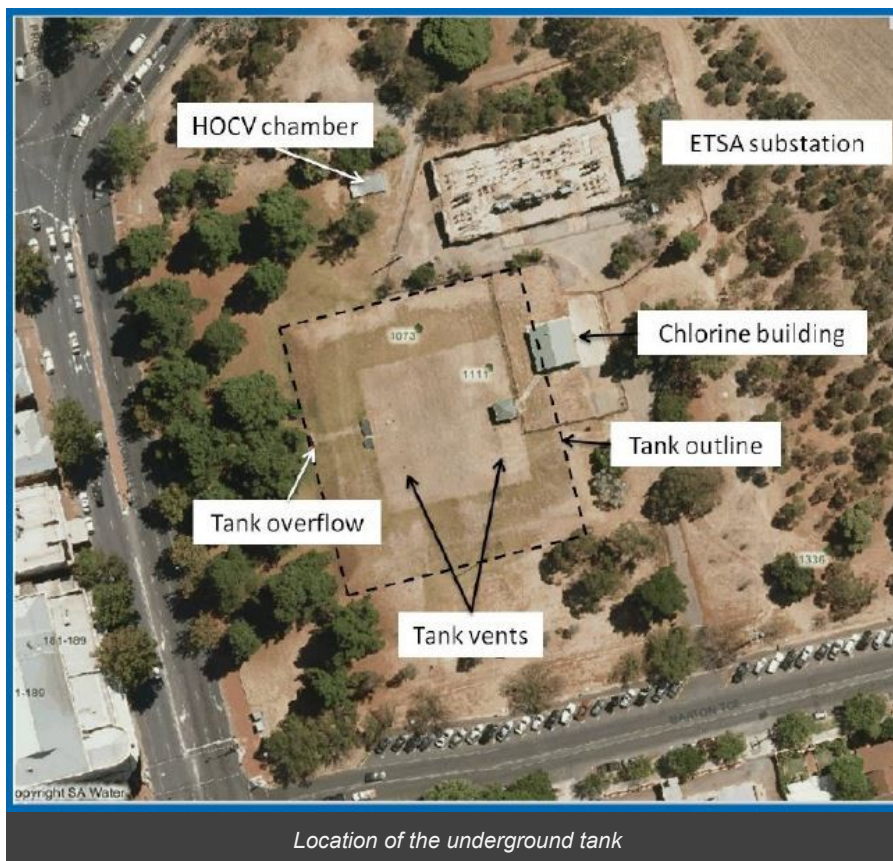
This structure, dating back to 1878, is located underground in Kangatilla (Park 4) near the corner of O'Connell Street and Barton Terrace East, North Adelaide.

it looks like a cathedral or vault, but it's actually a 4.7 megalitre water tank.

The reason that you're seeing it now is because SA Water is undertaking maintenance to fix minor cracks in the tank's roof, and to clear internal drains.

Originally constructed in 1878 by the old Hydraulic Engineers Office, the tank has an arched roof, supported by 48 columns, with a concrete floor and soil mounded over. The tank also includes drains to dispose of water that pools in the arches. Over the past 139 years little has changed to the internal structure of the tank.





*Location of the underground tank*



*External view from the south-west with the electricity substation in the background*

Construction work started earlier this month, after the area was temporarily fenced. SA Water advises that the work is expected to last for five months, after which the land over the tank will once again be open to the public.

The tank has been provisionally heritage listed with the SA Heritage Council, which noted:

*"The quality of its design and construction were remarkable for its time and function; the utilitarian building being constructed using piers and arcades more commonly seen in grand neoclassical structures, creating a 'cathedral-to-water'."*

SA Water advises that their planning and designs reflect a "primary requirement" to "protect the late 19th century architecture of the tank."



### WHAT'S ON IN THE PARK LANDS OVER THE NEXT FEW WEEKS

There are always events scheduled in the Park Lands, many of them free, and there are always opportunities to explore the Park Lands on your own, or with friends or family. Take a look at [our picture gallery](#) for hints about interesting spots to visit.

The City Council continually updates its list of 'what's on'.  
<http://www.adelaidecitycouncil.com/whats-on/category/park-lands>

Some things you might like to try over coming days or weeks include:



"Garden of Unearthly Delights" Feb 16 to March 19 – Rundle Park/Kadlitpina (Park 13)  
 Multiple venues for Adelaide Fringe events.  
 Details here:  
<http://www.gardenofuneearthlydelights.com.au/>



"Gluttony" Feb 16 to March 19 in what's left of Rymill Park/ Murlawirrapurka (Park 14) Shifted this year because of O-Bahn construction works. More venues for Adelaide Fringe events. See its web site here: <http://www.gluttony.net.au/>



"Royal Croquet Club" Feb 16 to March 19 – Pinky Flat, Tarntanya Wama (Park 26)  
 More venues for Adelaide Fringe events.  
 Details here: <https://royalcroquetclub.com.au/adelaide-2017/>



90-min walk through Wirraninithi (Park 23)  
 This beautiful park is a hidden gem, with wetlands, nature trails, and sculptures. Join local resident Kathleen on Fri March 10, leaving from the South-west Community Centre, 171 Sturt Street from 10am. Free! More details here:  
<http://www.adelaidecitycouncil.com/whats-on/event/park-lands-tour-of-wirraninithi-23>





Outdoor Circuit training- Light Square  
Mondays 5.30pm to 6.15pm . Run by  
'Anytime Fitness'. Only \$5 per session but  
bookings essential. More details here:  
<http://www.adelaidecitycouncil.com/whats-on/event/outdoor-circuit-training-anytime-fitness>

### 15 KILOMETRES OF FENCES KEEPING YOU OUT

Adelaide can probably lay claim to being a world record holder in keeping people OUT of Park Lands in February 2017.

There are more temporary fences scattered around the Park Lands than ever before. Some are for construction works – new buildings or infrastructure. Others are for Festival or Fringe events, or of course for motor racing. We conservatively estimate that this month the Adelaide Park Lands hosts at least 15 kilometres of temporary fencing. (See table below.)

In most cases we've identified, the Park Lands will be returned after specific events are over. But some, like the O'Bahn trench catastrophe in Rymill Park and the fencing on Frome Rd are temporary markers of what will be permanent Park Lands losses.

These photos were all taken over a few days in early February 2017. It is sobering to see just how extensive the "temporary" loss of Park Lands has become.



Part of Tainmuntilla (Park 11) on Frome Rd fenced off for a proposed new seven-storey high school.





Part of Bonython Park (Park 27) just off Park Tce, taken over for sewer upgrade works



More sewer works fencing off part of Narnungga (Park 25) off West Tce



Car racing fences preventing access to Ityamai-Itpina (Park 15) off Bartels Rd





And of course there are more car racing fences around Victoria Park (Park 16) for 5 months per year



O-Bahn construction work preventing access to Rymill Park (Park 14) from East Tce



The ongoing sacrifice of Rundle Park (Park 13) to O-Bahn construction





SA Water keeping you out of Kangatilla (Park 4) on the corner of O'Connell St and Barton Tce East (See the story 'Going Underground' in this *e-Gazette*)

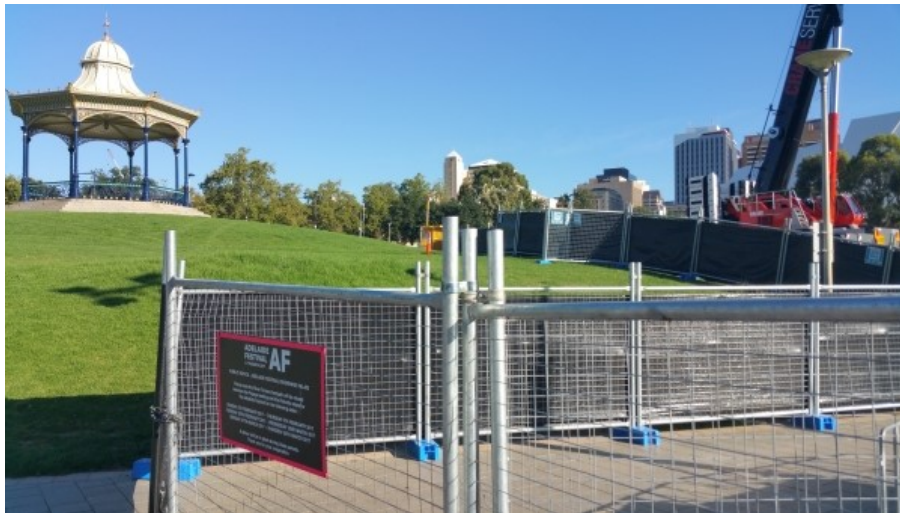


Angas Park on the Torrens Riverbank (Karrawirra, Park 12) is also off limits



A works compound, taking over part of the University playing fields on Karrawirra (Park 12) off War Memorial Drive





A large slice of Elder Park is also off limits for as long as it takes to install [a floating 'Palais de Danse' for the Festival](#)



No access to Rundle Park (Park 13) during setup for the Garden of Unearthly Delights



'Royal Croquet Club' taking over Pinky Flat, Torrens Riverbank, Tarntanya Wama (Park 26). The 25,000 square metre area has been licensed for 7,000 patrons, which has upset the Late Night Venue Association of SA.





'Danger' the Gluttony setup crew keeping you out of Rymill Park (Park 14) for now



Botanic Park, Tainmuntilla (Park 11) also fenced off for James Taylor concert, Feb 9th

Just to be clear: We are NOT opposed to concerts, Festival and Fringe events on Park Lands. Indeed we're helping to promote them elsewhere in this *e-Gazette* (See above). We love to see people enjoying the Park Lands. But every time a fence goes up, and for as long as the fence is in place, it's a restriction on public access. Each fence is intended to keep some people out.

We hope and expect that any damage caused inside these fence lines is repaired by those who put up the fences. We want to see Parks restored. But we're not confident that will happen in all the places pictured above.

We have never seen so many fences on Park Lands all at the same time- with so many literal barriers to public enjoyment of Adelaide's unique heritage.

Our aim in publicising all of these, is simply to raise awareness and make you think. Is there a better way of doing things? Could we attract people to enjoy Adelaide's Park Lands with fewer fences? Most importantly, for construction works, we ask: Could we put new buildings and infrastructure in places other than the besieged Park Lands?



*Rough guide to 'temporary' fences prohibiting (or hindering) access to Park Lands on 9 Feb 2017.*

**rough estimate of Park Lands temporary fencing February 2017**

	km
Sewerage upgrade works (Park 27)	0.4
Sewerage upgrade works, Narnungga (Park 25)	0.3
SA Water tank upgrade Kangatilla (Park 4)	0.8
Hackney bridges restrictions (Park 11)	0.3
Hackney Rd fences (Park 11)	0.8
Botanic Park event fence (Park 11)	1.5
repair works River Torrens, Karrawirra (nr Uni playing fields) (Park 12)	0.6
Royal Croquet Club, Pinky Flat (Park 26)	1.2
Garden of Unearthly Delights, Rundle Park (Park 13)	0.8
Gluttony, Rymill Park (Park 14)	0.7
O-Bahn construction, Rundle Park (Park 13)	0.2
O-Bahn construction Rymill Park (Park 14)	1
Motor race fencing, Ityamai-itpina (Park 15)	2.5
Motor race fencing, Victoria Park (Park 16)	3
Circus, Hindmarsh Square	0.2
Festival Plaza, Park 26	0.3
Elder Park, River Torrens, Park 26	0.2
Riverbank near Convention Centre, Park 26	0.2
<b>estimated total (conservative)</b>	<b>15</b>

**A 'SOCIAL ENTERPRISE' COMMUNITY GARDEN?**





#### BRIEFLY, IN OTHER NEWS...



APPA has joined the international organisation *World Urban Parks*.

This membership gives an international focus to our activities and helps us see Adelaide's unique heritage in the context of increasing pressures on Parks everywhere.

Read the [February newsletter of World Urban Parks](#)

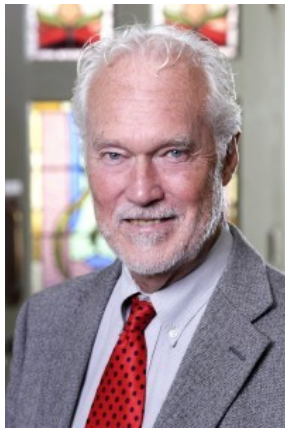


#### Acknowledging Colonel Light's vision

Lord Mayor Martin Haese (pictured) now has a practice of acknowledging, at the start of every Adelaide City Council meeting:

*"...the vision of Colonel William Light in determining the site for Adelaide and the design of the City, with its six squares and surrounding belt of continuous parklands, which is recognised on the national heritage list as one of the greatest examples of Australia's planning heritage."*

Now, if only we could persuade Premier Jay Weatherill to do this before State Cabinet meetings.....



**Save the date: Sunday 30 April at 9.30am (for 10am start).**

That's the time for APPA's Annual General Meeting. The guest speaker will be the President of the Council of the National Trust of Australia (SA), Professor Norman Etherington (pictured), who is one of [the 31 'Eminent South Australians who have appealed to the State Government not to commercialise or privatise the Adelaide Park Lands.](#)

He'll be speaking about the success of the National Trust's recent community activism – pushing back against State Government plans to drastically reduce protection for our built heritage.

The AGM will also feature the premiere of a new animated APPA video, from cartoonist Greg Holfeld. More details on the AGM in next month's e-Gazette.

#### PHOTOS OF THE DAY - RECENT HIGHLIGHTS







From the top:

- a) Watching junior cricket, Victoria Park / Pakapakanti (Park 16)
- b) Pelican family on the River Torrens near Victoria Drive, Karrawirra (Park 12)
- c) Rymill Park / Murlawirrapurka (Park 14) - on the far side from the O-Bahn construction works
- d) Floral clock, Brougham Gardens / Tantutittingga (Park 29)

The Park Lands 'photo of the day' series has been running since May 2014, and **the collection of Park Lands photos now numbers over 1,000**. We maintain (and gradually grow) 37 separate albums for each one of our 30 Parks, six squares (and one album for 'Alienations'). To browse the photos follow the link below to '[Our photos on Flickr](#)'.



APPA on Facebook



@adelparklands



APPA website



Our photos on Flickr



Share



Tweet



Forward

Copyright © Adelaide Park Lands Preservation Association, Inc. [2015] All rights reserved.

[unsubscribe from this list](#) [update subscription preferences](#)

MailChimp