

e-Gazette No. 025 - April, 2017.

If this email doesn't look right,
then:[View this email in your browser](#)

In this e-Gazette....

- [HERITAGE ASSESSMENT - CONFLICT OF INTEREST](#)
- [HOCKEY CLUBS TAKEOVER BID?](#)
- [TELLING IT LIKE IT IS](#)
- [MINISTER SENT BACK TO KINDERGARTEN](#)
- [WHAT'S ON IN THE PARK LANDS IN THE NEXT FEW WEEKS](#)
- [TORRENS RAIL JUNCTION PROJECT IN BONYTHON PARK](#)
- [HOW TO CHALLENGE THE GOVERNMENT AND WIN](#)
- [NATIONAL HERITAGE LISTING NO PROTECTION FOR ELDER PARK](#)
- [PHOTOS OF THE DAY - RECENT HIGHLIGHTS](#)



HERITAGE ASSESSMENT - CONFLICT OF INTEREST



The State Government has stunned Park Lands supporters by appointing an architectural firm currently pushing a Park Lands privatisation bid, to assess whether the Park Lands should be heritage listed.

A long process to determine whether the Park Lands should be State-heritage listed is just commencing, eight years after APPA applied for it.

Last month, the Department of Environment, Water and Natural Resources called for [expressions of interest for consultants to conduct an assessment of the Adelaide Park Lands](#) for this purpose.

The winning consultants have just been identified as Dash Architects (in association with Dr Peter Bell). Dash Architects is the same firm that has recently drawn up plans for a private hockey stadium that would exclude the public from part of Tuthangga (Park 17) just off Beaumont Rd.

*dash*architects

The stadium proposal for high fences, 2-storey walls, locks, yet another corporate function centre and private store rooms, is totally at odds with public use of the Park and is being strongly opposed by APPA and the SA Touch Football Association. (See the following story.)

APPA Secretary, Shane Sody has called on Dash Architects to give up one of its two incompatible roles.

"Whose side are they on?" Mr Sody asked. "Either they can represent their clients, the exclusive hockey clubs, and push for development on Park Lands that is incompatible with public use and enjoyment. Or, they can represent the public interest by dispassionately reviewing the Park Lands for heritage assessment. They cannot have it both ways.

"More fundamentally, the Government should not have put the firm in this position.

"The Minister for the Environment, Ian Hunter must tell his Department that it cannot go ahead with such a compromised appointment. Minister Hunter must tell his Department to immediately re-start the process of looking for a neutral unbiased consultant to undertake the long-overdue heritage assessment of the Park Lands."



Share this



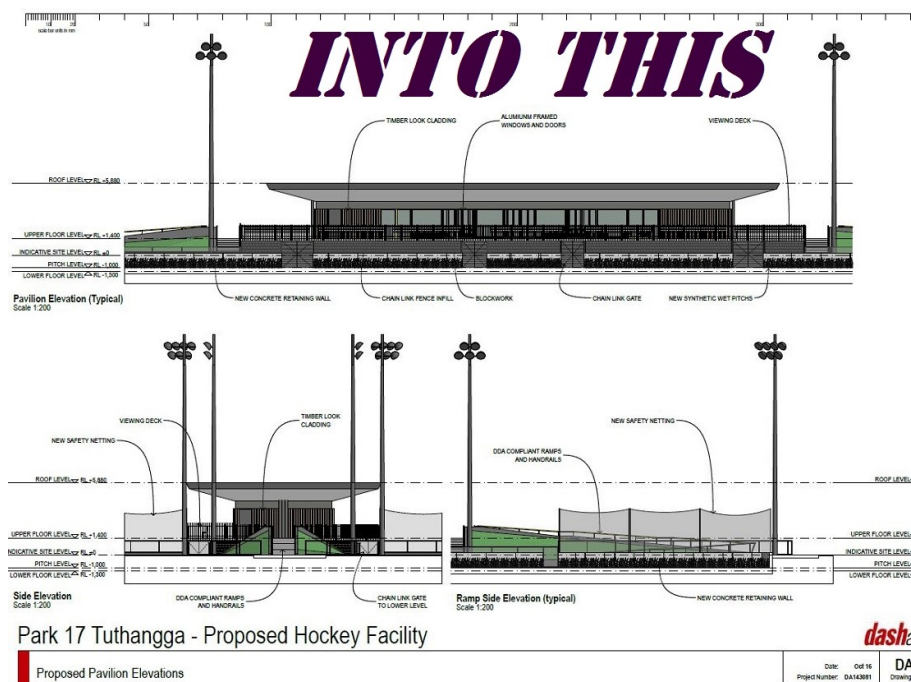
Tweet this



Forward to a friend

HOCKEY CLUBS TAKEOVER BID?





This is the \$10 million ambit privatisation plan put up by the Adelaide Hockey Club and Burnside Hockey Club (drawn up by Dash Architects) for Tuthangga (Park 17) just off Beaumont Rd. Public Park Land to be handed over to eastern suburbs sports clubs?

APPA's fight to save Tuthangga for public (not private) use has been joined by Touch Football SA whose members have been enjoying the playing fields at Tuthangga for decades. Under the hockey clubs' proposal the Touch Football community would be booted off the area.

Read more here:

<http://www.adelaidenow.com.au/messenger/east-hills/why-one-adelaide-sports-group-doesnt-want-hockey-in-the-south-parklands/news-story/54d4dd9c249cc8f53cod55b8575f3956>



"X" marks the spot.

Feedback to the Council closes at 9am, Wednesday 26 April 2017.

Tell the City Council what you think:

<http://yoursay.cityofadelaide.com.au/park17-tuthangga-hockey-proposal>

TELLING IT LIKE IT IS

Hockey clubs are not the only ones with an agenda to take Park Lands away from the public.

State Government construction is well under way on its proposed shopping mall and restaurant precinct in Festival Plaza/Elder Park – part of Tarntanya Wama (Park 26). See our story below: "[National Heritage Listing No Protection for Elder Park](#)".

Likewise, work gangs are currently digging up part of Tainmuntilla (Park 11) just off Frome Road for what the State Government proposes to call the "Adelaide Botanic High School"



If this is NOT what you want for your Park Lands, then Take Action now;
<http://www.adelaide-parklands.asn.au/take-action/>



Share



Tweet



Forward

MINISTER SENT BACK TO KINDERGARTEN

APPA has been campaigning recently to try to reduce the annual 5-month burden during which Victoria Park / Pakapakanthi (Park 16) is strewn with the clutter of a mere four-day car racing festival. See our recent stories:

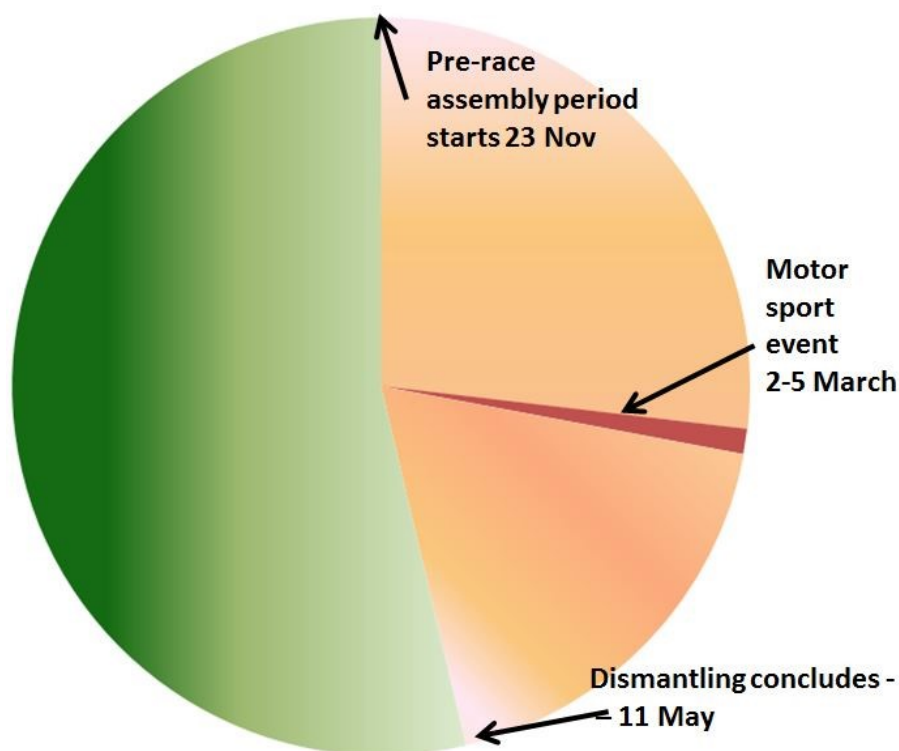
- ["Hopes Lifted for Freeing Victoria Park" - December 2016](#)
- ["Want to Attract Heat? Just Ask for Faster Work" - January 2017](#)
- ["Motor Racing - A Benefit or a Burden?" - March 2017](#)

The pressure must be telling for our State Tourism Minister, Leon Bignell. Forgetting the rule he presumably learned in kindergarten, he wants other people to clean up the State Government's mess in the Park Lands.

APPA applauds the City Council for standing firm against this nonsensical attempt at cost-shifting.



The Lord Mayor Martin Haese was not impressed. See how this was reported on ABC-TV News



A year in the life of Victoria Park. The five-month takeover for a four-day event



Share



Tweet



Forward

WHAT'S ON IN THE PARK LANDS IN THE NEXT FEW WEEKS

There are always events scheduled in the Park Lands, many of them free, and there are always opportunities to explore the Park Lands on your own, or with friends or family. Take a look at [our picture gallery](#) for hints about interesting spots to visit.

The City Council continually updates its list of 'what's on'.
<http://www.adelaidecitycouncil.com/whats-on/category/park-lands>

Some things you might like to try over coming days or weeks include:



"Feasting in the Gardens" – Adelaide Botanic Garden, Mon, Wed & Fri 1st, 3rd 5th May at 1.15pm

Expert garden guides will take you for a tour of the Botanic Gardens "kitchen garden" explaining how different cultures use various vegetables. Learn about the rich history and different health benefits of various vegetables. Taste products prepared straight from the garden, broadening both your knowledge and your palate. \$5 adults \$3 children. Bookings essential



Torrens ParkRun – every Saturday 8am

A 5 km timed run, starting from the Torrens Weir. No entry fee, but participants need to register (once only) before their first run. It's non-competitive and purely for enjoyment – just you against the clock, whatever your pace!



The National Trust "Heritage Walk" Park Lands and City Layout

Wed 3rd & Thu 18th May, 2pm
 Part of the SA History Festival. Meet at Colonel Light's monument Montefiore Hill. Adult: \$15, Concession: \$12, Child: \$8. Bookings essential



Wild Imagination – School Holiday Nature Play Program each day of the holidays until April 29th

Victoria Park (Park 16) near the corner of East Tce & Carrington St. A school holiday program that gets kids off their screens and back to nature. Child-led play where kids get to use their imaginations, create elaborate craft projects, build momentous structures and invent games with new friends. Bookings essential.



[Natural History of the Adelaide Park Lands after Dark](#). Tues 9th & Thurs 18th May, 5.45 to 7.30pm.
Friends Gate, Adelaide Botanic Garden, Plane Tree Drive. Cost: Donation to Nature Conservation Society of South Australia. Bookings essential. Join us for a nocturnal walk through the Adelaide Park Lands looking for possums, bats, water rats, owls, nightjars and other creatures and learn more about the wildlife you share your city with. Bring a small torch. You may see lots of animals (or nothing!)



Share

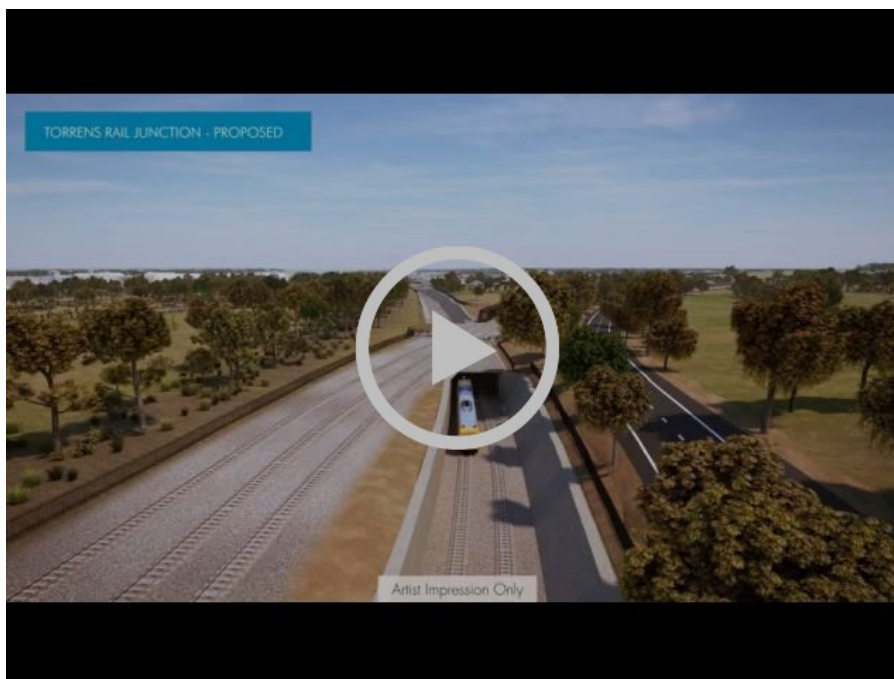


Tweet



Forward

TORRENS RAIL JUNCTION PROJECT IN BONYTHON PARK



The Easter long weekend has been the signal for work to step up on the Torrens Rail Junction project.

Starting on Good Friday, 24-hour continuous work has been under way in Bonython Park / Tulya Wardli (Park 27) for piling works and services installation of the rail bridge in the Park Lands. Piling rigs, cranes, excavators, tip, tandem and concrete trucks, lighting towers and light vehicles will be used to perform these works.

Traffic disruptions are being experienced on Park Terrace at Bowden, at least until after Anzac Day. Motorists are urged to plan ahead, find alternate routes, and allow extra travel time. More details here: <http://www.dpti.sa.gov.au/torrens-rail-junction>



Share

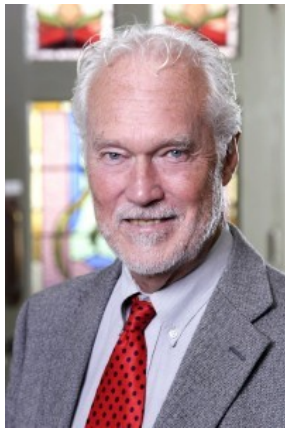


Tweet



Forward

HOW TO CHALLENGE THE GOVERNMENT AND WIN



In September last year, the State Government came up with controversial proposals to diminish local (built) heritage protections and remove councils and communities from future decision making.

The National Trust (SA) led a wave of community passion for our heritage and the need to enhance current protections rather than to diminish them.

More than 300 people turned out for a public meeting on the issue in the Adelaide Town Hall. The president of the National Trust of South Australia, Professor Norman Etherington, led the charge.

There is a great deal of crossover between the aims of the National Trust and the aims of the Adelaide Park Lands Preservation Association. Accordingly, Professor Etherington has agreed to share his insights and the lessons learned during that 2016 campaign as guest speaker at this month's APPA Annual General Meeting.

The AGM is at 9.30am on Sunday 30 April 2017, at the Don Pyatt (Concert) Hall within the Norwood Town Hall. Although primarily for APPA members, the meeting is open to the public.

We would especially welcome any prospective new members or volunteers.

More details here: <http://www.adelaide-parklands.asn.au/agm2017>



Share



Tweet



Forward

CHILDREN, PLAY AND NATURE



[World Park News this month](#) features an article on the importance of children's play in nature. Here's a snippet:

Children need to play. They need to play outside, and they benefit tremendously when they have experiences in nature. We as humans are hard-wired for being outside in the natural environment, but the cities we are building today are making it more difficult for children (and people of all ages) to experience the tremendous benefits of play and nature.

In the U.S, research suggests that 35 per cent of households do not have a park within walking distance of their home, and that is in one of the wealthiest countries in the world. We must do much better, not only for the quality of life for children today, but also for future generations.

In the Adelaide Park Lands there are at least six children's playgrounds. Most recently installed is the Tidlangga (Park 9) playspace created by Proludic Pty Ltd and funded by the Adelaide City Council. Pictures above are courtesy of Proludic.

Read the *World Park News* **April 2017 newsletter** here:
<http://mailchi.mp/b831ce09fd22/-1?e=3812cfdde4>



Share



Tweet



Forward

NATIONAL HERITAGE LISTING NO PROTECTION FOR ELDER PARK



You might wonder how the Walker Corporation and Sky City Casino can get away with their proposed massive new buildings on Festival Plaza when the land is part of the Adelaide Park Lands, and there is National Heritage listing of the Park Lands.

The answer is unfortunately, quite simple. Although this is all part of the Park Lands under State law, it's simply been left out of the description of the Park Lands for the purposes of National Heritage listing.

Accordingly a Federal Government bureaucrat [has made a formal decision](#) that a tiny extension of the Plaza onto Elder Park will NOT impact on the Park Lands.

His decision totally ignores the proposed new office tower, casino extension, shops and restaurants – as if they were all on another planet.

Ironically this bureaucrat was acting on [advice from Dash Architects](#). (See our top story, above.)



Share



Tweet



Forward

PHOTOS OF THE DAY – RECENT HIGHLIGHTS



From the top:

- a) Cycle commuting through Pityarilla (Park 19) near Glen Osmond Rd
- b) Watching cricket/ walking the dog at Mirnu Wirra (Park 21W) off South Tce near West Tce
- c) Mobile rock climbing in Ityamai-Itpina (Park 15) off Bartels Rd
- d) Taking a break in Brougham Gardens /Tantutittinga (Park 29)
- e) Ibis grazing in Hurtle Square / Tangkaira

The Park Lands 'photo of the day' series has been running since May 2014, and **the collection of Park Lands photos now numbers well over 1,000**. We maintain (and gradually grow) 37 separate albums for each one of our 30 Parks, six squares (and one album for 'Alienations'). To browse the photos follow the link below to ['Our photos on Flickr'](#).





APPA on Facebook



@adelparklands



APPA website



Our photos on Flickr



Share



Tweet



Forward

Copyright © Adelaide Park Lands Preservation Association, Inc. [2015] All rights reserved.

[unsubscribe from this list](#) [update subscription preferences](#)

MailChimp