

e-Gazette No. 027 - June, 2017.

If this email doesn't look right,
then:[View this email in your browser](#)

In this e-Gazette....

- [TRUST OR BETRAYAL - WHICH SIDE OF HISTORY?](#)
- [SECRET HELI-PAD MONOPOLY REVEALED](#)
- [STATE ELECTION LOOMING - WHAT COMMITMENTS TO SEEK?](#)
- [APPA's GUIDED WALKS PROGRAM](#)
- [WHAT'S ON IN THE PARK LANDS OVER THE NEXT FEW WEEKS](#)
- [PARK 17 HOCKEY - HUNDREDS OPPOSE PRIVATE TAKEOVER](#)
- [PUBLIC ACCESS IGNORED IN NEW TENNIS PLANS](#)
- [BRIEFLY, IN OTHER PARK LANDS NEWS](#)
- [HERITAGE ASSESSMENT OF PARK LANDS - OOPS!](#)
- [UNDER RYMILL PARK](#)
- [PHOTOS OF THE DAY - RECENT HIGHLIGHTS](#)

TRUST OR BETRAYAL - WHICH SIDE OF HISTORY?



Did you ever wonder why, after 180 years, there is no private housing on the Adelaide Park Lands?

Since 1837, some politicians presumably *must* have wondered whether some of the Park Lands might be sold off for housing.

So much prime land, so close to the CBD might have raked in cash to Government coffers on many occasions when SA desperately needed funds.

Imagine how tempting it might have been to sell Park Lands housing sites:



...when the 70-year copper mining boom eventually ended in the early 1920's;



...when prices for wool, and wheat collapsed leading up to the Great Depression of the 1930's;



...when SA was recovering from two World Wars;



...after the Ash Wednesday bushfires of 1983;



...in the wake of the State Bank Collapse in 1991;

But despite the temptations, the Adelaide Park Lands were regarded as too priceless (or impossible) to sell. No SA Government, during good times nor bad times, has ever behaved as if it had the right to sell an irreplaceable heritage that was held for our forebears, and now is held on trust for us, and for our descendants.

Until now.

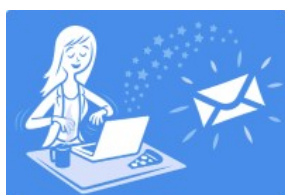
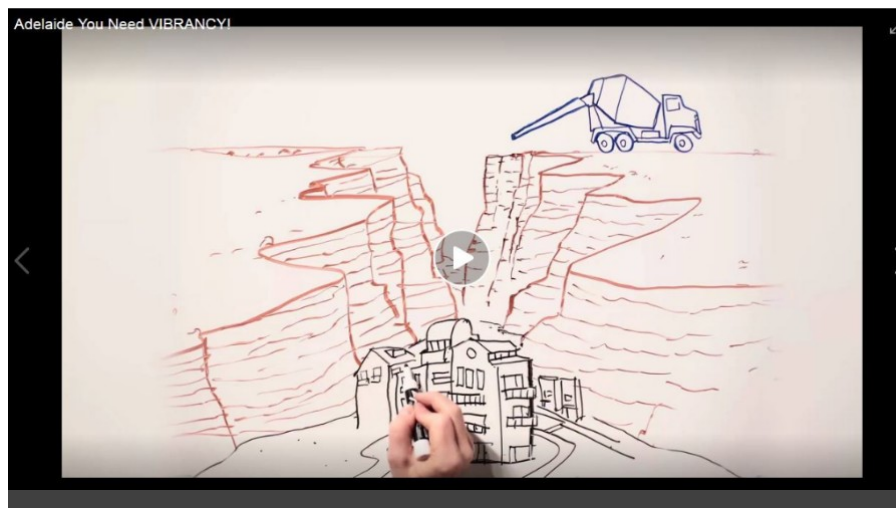
The current Government has created [an agency](#) with the express purpose of selling (or maybe leasing for a century) the Park Lands site of the old RAH (among their dealings with other sites).

And they are not kidding around. They're not flogging just one or two house blocks. They have abandoned any suggestion that the Park Lands are held for future generations (even though that's what the law says). They're planning [17-storeys \(or maybe 23 storeys, but who's counting?\) of apartments on Park Lands overlooking the Botanic Gardens.](#)

[31 Eminent South Australians have called it a "gross breach of trust"](#) and they're right.

We'd go further and call it a betrayal of the next generation (today's children) and the generations after them.

The excuse for letting developers loose to make a profit on Park Lands is not even a crisis like the ones listed above. The Government simply claims it'll add "vibrancy" to the east end of town. But we know that ["vibrancy" is just a code word.](#) It's simply a short-term idea to make a quick buck.



If this is NOT what you want for your Park Lands, then Take Action now;

[Write to your local State MP.](#) Sooner or later, in Parliament, every one of them will be asked to vote whether to allow leases of 99 years or longer for private apartments on the Park Lands site of the old RAH. Will they honour or betray their trust?

<http://www.adelaide-parklands.asn.au/take-action/>

You can get ideas for your letter from APPA's newly-revised Position Paper on the old RAH site.

http://archives.adelaide-parklands.asn.au/Submissions%20and%20Letters/RAH_Site_Position_Paper-June_2017.pdf



Share



Tweet



Forward

SECRET HELI-PAD MONOPOLY REVEALED



As revealed in our [e-Gazette of December 2016](#), expressions of interest were invited last year for commercial operators of a helipad in the Park Lands.

Details are still confidential as they are "commercial-in-confidence" which means of course that the plans are to exclude the public from what is intended to be yet another "commercial" site in the Park Lands.

The cat is now out of the bag, thanks to 'Montefiore Scuttlebutt' at the Adelaide Review. <http://adelaiderreview.com.au/opinion/general-opinion/montefiore-park-lands-chopper-monopoly/>

In short, it seems that the Council has already spent \$870,000 of public money, with intention to alienate part of Bonython Park, without consulting the public.



Share

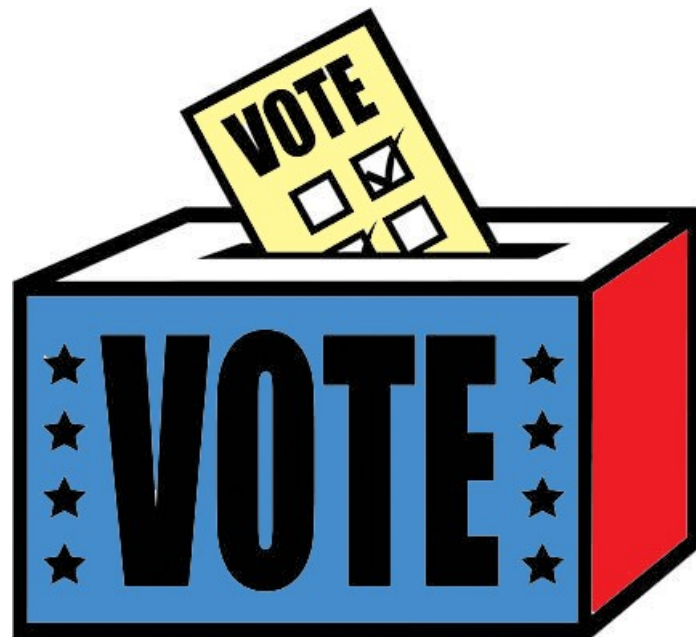


Tweet



Forward

STATE ELECTION LOOMING - WHAT COMMITMENTS TO SEEK?



The State election is to be held in March 2018.

In the coming months APPA will be surveying all parties and declared candidates on their attitudes to the Adelaide Park Lands. In particular we will seek commitments to strengthening the *Adelaide Park Lands Act 2005* to make it harder for future Governments to sell off or build over Park Lands, especially to private interests at the expense of the public.

Naturally we will advise you of each candidate's response. If you have specific questions you'd like us to put to candidates, please let us know. Email: secretary@adelaide-parklands.asn.au



Share



Tweet



Forward

APPA's GUIDED WALKS PROGRAM

APPA has arranged a series of free guided walks through various parts of the Adelaide Park Lands. Each walk is led by a different 'Park Ambassador' with a passion for the area.

The full schedule to the end of this year, is on our website:
<http://www.adelaide-parklands.asn.au/guided-walks>

...and each walk is also listed as an "event" on our Facebook page:
<https://www.facebook.com/pg/ADELAIDEAPPA/events/>

Each walk is free for APPA members, and a gold coin donation is requested for others. Children and dogs are most welcome.

There's one guided walk per month, on a weekend date. The next one is in Karrawirra (Park 12) on the afternoon of Saturday July 8th. See the next story below.



22 people (and three dogs) enjoyed a stroll around Nantu Wama (Park 6) in the first of our guided walk series on Saturday 3 June.



Share



Tweet



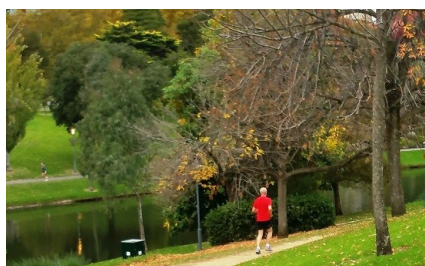
Forward

WHAT'S ON IN THE PARK LANDS OVER THE NEXT FEW WEEKS

There are always events scheduled in the Park Lands, many of them free, and there are always opportunities to explore the Park Lands on your own, or with friends or family. Take a look at [our picture gallery](#) for hints about interesting spots to visit.

The City Council continually updates its list of 'what's on'.
<http://www.adelaidecitycouncil.com/whats-on/category/park-lands>

Some things you might like to try over coming days or weeks include:



Guided walk through Karrawirra (Park 12)

Saturday 8 July 2017 2pm to 3.30pm

Join APPA Secretary, Emeritus Professor Damien Mugavin for a guided walk, learning about one of the best-loved parts of the Park Lands, along the banks of the Torrens. No booking necessary. Gold coin donation. (Free for APPA members). Children and dogs welcome. More details here:

<https://www.facebook.com/events/441486949563433/>



Women's Run in the Park

Sunday 9 July 2017 – corner South Tce & East Tce 8.30am for a 9.00am start
Running SA and the Adelaide City Council have teamed up to create a new award-winning initiative called the Women's Recreational Running Network (WRRN). The WRRN aims to activate city parks and break down barriers for women's participation in physical activity within the City of Adelaide.



"Ride With Keith" every Wednesday 9am to 11am

A weekly bike ride for cyclists of any ability around the Park Lands and river bike paths of Adelaide. Pace is leisurely and open to all. Coffee and socialising at the conclusion of every ride and hosted by Adelaide icon, Keith Conlon.



Yoga Day Festival

Wellington Square – Sunday June 18 – 2.00pm to 4.00pm (Free)

Kirtan – The ancient chants of India to the melodies, beats and rhythms of the modern world that will provide you with an amazing interactive musical experience known as Kirtan. Warm chai and blissballs to share to celebrate the warmth of Yoga Day Festival.



Wild Food and Medicine at Wirraninithi

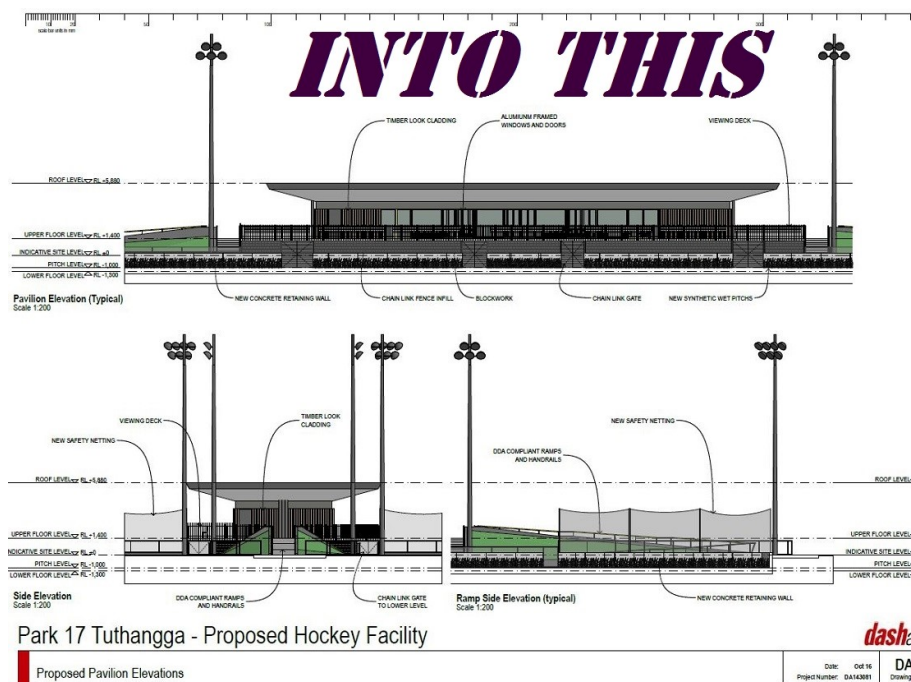
Saturday 24 June 10am to 1pm

Explore the wild food and medicine in Park 23. Featuring expert guided walks, a traditional Aboriginal Ngangkari healing workshop, homemade morning tea featuring wild & native ingredients. Brought to you by Splash Adelaide and Conscious Lifestyles.

Tickets required: follow [this link to the City Council web page](#).

PARK 17 HOCKEY – HUNDREDS OPPOSE PRIVATE TAKEOVER





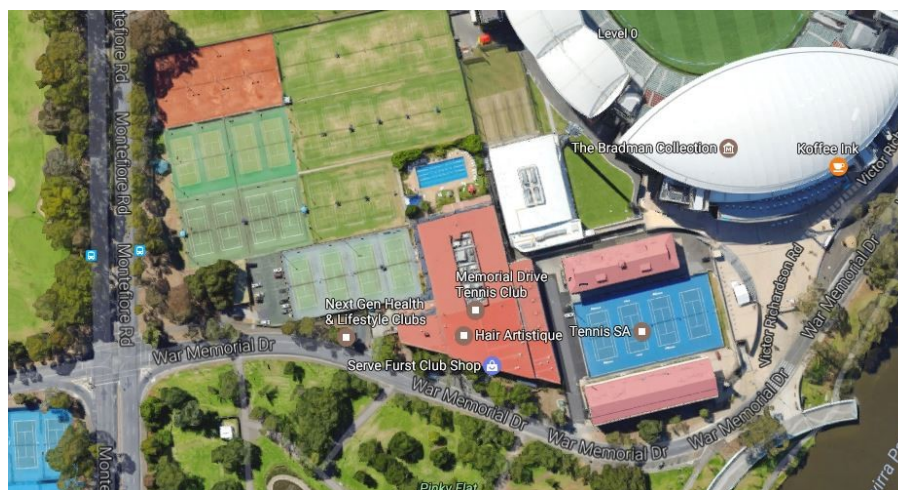
Adelaide City Council members have been briefed on the results of public consultation on recent proposals by the Burnside and Adelaide Hockey clubs for a new stadium and function centre in Tuthangga (Park 17).

No decision has been made but the results of the consultation should soon be made available to all Councillors. It remains to be seen whether all submissions will be released publicly.

APPA was among those arguing to keep the and public. Here's our submission:

<http://archives.adelaide-parklands.asn.au/Submissions%20and%20Letters/Tuthangga%20Park%2017%20Hockey%20submission%202017-04.pdf>

PUBLIC ACCESS IGNORED IN NEW TENNIS PLANS



As you can see from the above picture, a very large area of Tarntanya Wama (Park 26) is off limits to the public (and has been that way for decades).

Adelaide Oval, Tennis SA, Memorial Drive Tennis Club, the Next Generation Fitness Centre and even a hairdressing salon have all taken over parts of this park, with leases in some instances as long as 50 years.

For those who dream of one day reclaiming any part of this land for the public, the signs are not looking good. Tennis SA has secured a \$10 million Federal grant to upgrade existing courts, install new fencing and lighting, and construct a new 'Pavilion' in this area, in what it is calling the "Anchor Project".

Publicity that's been disseminated to members of the Memorial Drive Tennis Club about the "Anchor Project" spruiks the benefits to its *members*, but totally omits any discussion of the broader public, from whom this land is leased.

Under the [lease re-negotiated last year with the Adelaide City Council](#) Tennis SA pays just \$304 per week (indexed) for 3,500 square metres of Park Land. To put that into perspective, you'd pay a similar amount for a tiny 60 to 70 square-metre two-bedroom apartment in a suburb like Prospect or Sefton Park.

But the "Anchor Project" is just the beginning of the grand plans to build over this once-public Park with something much larger. In the words of the "Anchor Project FAQ" there is a "grand vision for a tennis precinct showcased by a multi-sport retractable roof stadium positioned on the site of the existing Tennis SA Centre Courts"



Tennis SA's publicity shows their hoped-for vast area of concrete, and a massive new covered stadium alongside Adelaide Oval. There is, as yet, no funding for this so-called "Stage 2" but the current "Anchor Project" is intended to help realise this ambition.



Share



Tweet



Forward

BRIEFLY, IN OTHER PARK LANDS NEWS



Park Lands Art Prize

Planning for the [2018 Park Lands Art Prize](#) is about to ramp up. The City Council on 13 June approved a \$10,000 sponsorship as part of the annual budget of the Park Lands Authority. Thank you City Council! This means that announcements can be made soon about how and when to enter. The exhibition of finalists is already scheduled for July 2018, with the venue almost certain to be the Festival Centre.



ADELAIDE PARK LANDS MANAGEMENT STRATEGY
DRAFT FOR FORMAL CONSIDERATION

Management Strategy lost in the mail, perhaps?

Last year, after months of consultation by the Park Lands Authority, the City Council finalised the Park Lands Management Strategy 2015-25 and in November 2016 sent it off to Minister John ("I'm not a Park Lands enemy") Rau for approval. Silence. As at 13 June 2017, Minister Rau still hadn't approved it. It's sitting on his desk, apparently. Given [Minister Rau's track record on Park Lands issues](#) this gives us some cause for concern.

Download 'MAGICAL PARK' for FREE to play a game here at Nantu Wama Park, Adelaide

Available on the App Store | Get it on Google play

WHAT DO YOU NEED TO PLAY?

- COMPATIBILITY**
Runs on iPhone 5+ & iPads 3+ and Android devices with Compass, Gyroscope, GPS & Accelerometer sensors
- INTERNET**
Have access to mobile data or hotspot. 50KB data per game
- GEOLOCATION**
Make sure your GPS is on and set to high accuracy (if available)

* Designed to get kids active outdoors
 * Suitable for kids 6-11 years old
 * Sponsored by the City of Adelaide
 * We respect data privacy
 * No in-game advertising
 * Average playtime 30-60min
 * Different games to choose from
 * Kids run on average 700m-2km
 * Available in activated park spaces
 * Kids must be under adult supervision

START GAME IN THE CENTRE OF MARKED MAP AREA

For more information visit www.MagicalPark.net Or email support@geogames.com

2017 CITY OF ADELAIDE GEO A.R. PARTNERS

Magical Park?

Apparently there are fairies and dinosaurs roaming around in Nantu Wama (Park 6). Who knew?

All you need is a free smartphone app to see and chase them! The City Council has joined with software developers to encourage children (ages 6 to 11) to get active outdoors (in Park 6). Games last 30 to 60 minutes during which time kids will run up to 2 kilometres. More details at www.MagicalPark.net or search for the Magical Park app



Pityarilla (Park 19)

Signs have been erected in Pityarilla (Park 19) near the corner of Glen Osmond Rd and Unley Rd promoting the new design features that are being funded to the tune of \$4.5 million by the State Government. APPA welcomes this initiative as it will encourage more people to visit and appreciate this part of the Park Lands.

<http://www.cityofadelaide.com.au/planning-development/city-planning/major-projects/park-19-enhancement>



New urban forest for Tampawardli (Park 24)

This temporary fencing is near the corner of West Terrace and Sir Donald Bradman Drive. Landscape works have already removed low shrubs and old fencing that acted as a barrier to Park 24. When completed, the current project will result in 60 new eucalyptus (several species) laid out in a grid pattern, along with a new irrigation system to accommodate the new tree plantings.



A \$6.7m "formal Park" with amenities?

APPA, the Park Lands Authority, and the City Council are all waiting to see what the State Government proposes to build in Narnungga (Park 25) opposite the New Royal Adelaide Hospital (pictured). The Government's [announced a commitment of \\$6.7 million](#) to "provide a high-quality formal park with amenities and attractions to offer a place of respite for staff and visitors". The sentiments are welcome but the devil, as always, will be in the detail.



Our archives

Our archives are finally working and fully searchable. Thanks to our Uni SA volunteer, Yihao Gao, it's now possible to search the text of all our past newsletters, and public submissions, dating back to 2003.

<http://archives.adelaide-parklands.asn.au/>

HERITAGE ASSESSMENT OF PARK LANDS - OOPS!

How can you have a say?

DEWNR will set up a **YourSAy** website profile by mid-2017 to enable members of the community and stakeholders to express what is important to them about the Adelaide Park Lands and City Squares. The website will be available in early April 2017 via:

<http://yoursay.sa.gov.au/decisions>

By "early April" the Government was advertising that there would be a website set up to take public comment on whether the Adelaide Park Lands should receive State Heritage listing. The process may have hit a snag, after APPA highlighted an obvious conflict of interest for the contracted assessor...a firm of architects that has clients seeking to privatise parts of the Park Lands.

However, concerns expressed to the Minister about the obvious conflict of interest have been merely brushed aside by a bureaucrat, with no acknowledgement that this issue has even reached the Minister's desk.

We do not believe there is a conflict of interest in appointing DASH Architects, a well-recognised heritage conservation practice of over forty (40) years standing to provide advice through DEWNR to the SA Heritage Council on heritage significance of the Adelaide Park Lands and City Squares.

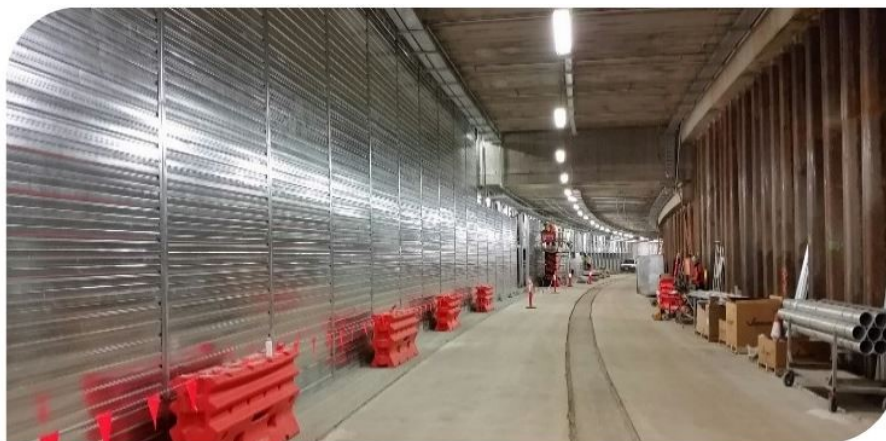
Thank you for taking the time to write to the Minister and I trust the information will be helpful.

Yours sincerely

Matt Johnson
GROUP EXECUTIVE DIRECTOR
ECONOMIC AND SUSTAINABLE DEVELOPMENT



UNDER RYMILL PARK

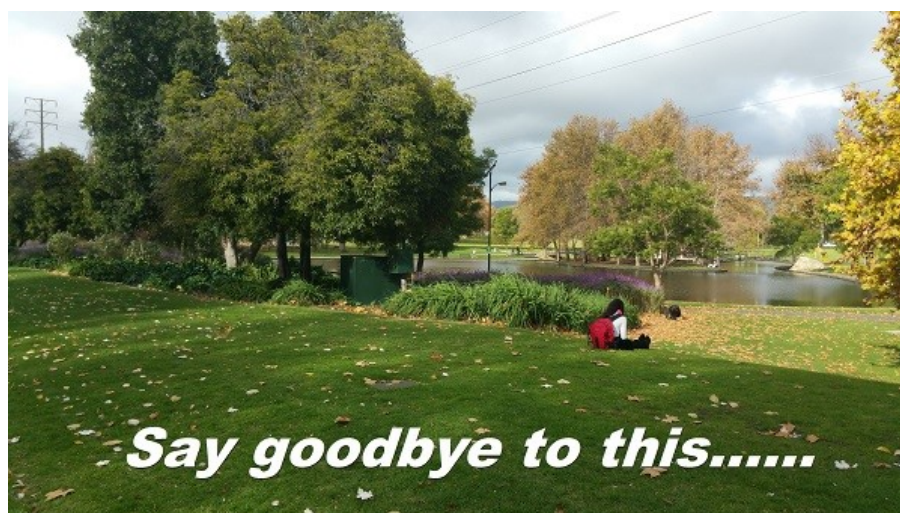


The end is in sight for construction works on the O-Bahn City Access Project.

Although the budget for remediation works is still secret, the State Government has released photos showing the covered trench (above)...



...and an artist's impression (above) of future buses emerging to ground level next to the Rymill Park lake, and heading west towards Grenfell street. This might be the scene 20 years in the future, after all the cut-down trees have grown back.



In case you had forgotten, this is what the area used to look like, just before the construction gangs moved in looking south-east from the western end of the lake towards Dequetteville Tce.



Share



Tweet



Forward



From the top:

- a) Cyclocross racing, Victoria Park/Pakapakanthi (Park 16) Photo: Bethany Loates
- b) Swans at Pinky Flat, Tarntanya Wama (Park 26)
- c) Horses at Nantu Wama (Park 6) off Kingston Tce
- d) Whitmore Square / Iparrityi. Photo: Google Maps
- e) North Adelaide Dog Park, Ngampa Yarta (Park 5) off Merdindie Rd. Photo: Trish Russell

The Park Lands 'photo of the day' series has been running since May 2014, and **the collection of Park Lands photos now numbers more than 1,150**. We maintain (and gradually grow) 37 separate albums (i.e. one for each of the 30 Parks, six squares and one album for 'Alienations'). To browse the photos follow the link below to '[Our photos on Flickr](#)'.



[APPA on Facebook](#) [@adelparklands](#) [APPA website](#) [Our photos on Flickr](#)



Share



Tweet



Forward

Copyright © Adelaide Park Lands Preservation Association, Inc. [2015] All rights reserved.

[unsubscribe from this list](#) [update subscription preferences](#)

MailChimp