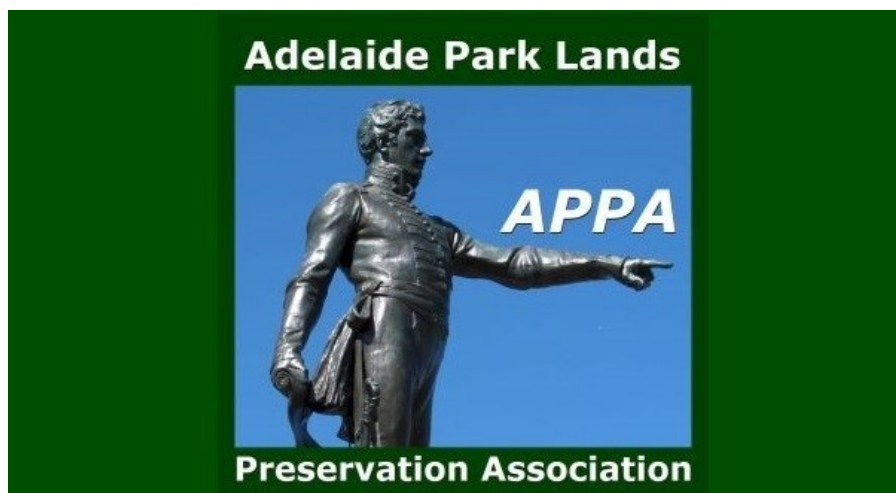


e-Gazette No. 031 - October, 2017. If this email doesn't look right
(e.g. if there are no pictures) then:

[View this email in your browser](#)



In this e-Gazette....

- [IT'S SIMPLE: KEEP PUBLIC LAND PUBLIC](#)
- [QUIETLY CONFIDENT ON HERITAGE LISTING](#)
- [UNSOLICITED PROPOSALS](#)
- [ANOTHER BRICKBAT NOMINATION FOR A PARK LANDS SPOILER](#)
- [WORKS ON THE O-BAHN CITY ACCESS PROJECT TO FINISH LATE 2017](#)
- [PARK LANDS VIDEO OF THE MONTH](#)
- [WHAT'S ON IN THE PARK LANDS OVER THE NEXT FEW WEEKS](#)
- [STADIUM MANAGEMENT AUTHORITY WANTS LIQUOR LICENCE FOR THE PARK LANDS](#)
- [THREE IN A ROW: "EXPRESSIONS OF INTEREST" for SPORTS FACILITIES](#)
- [BRIEFLY, IN OTHER PARK LANDS NEWS](#)
- [PHOTOS OF THE DAY - RECENT HIGHLIGHTS](#)

IT'S SIMPLE: KEEP PUBLIC LAND PUBLIC

A year-long campaign by APPA, backed by the City Council and [31 eminent South Australians](#) achieved a breakthrough last month when first the Liberal State Opposition, and then the Labor State Government, both retreated from a controversial proposal to have more than a thousand high-rise private apartments built on the old RAH site.

APPA claimed victory for our public petition, which had attracted more than 1,500 signatures.

However the fight to protect the Park Lands site of the old RAH from private commercial development is still going on.

Both the Government and Opposition are threatening to hand over part of the site to developers for a five-star luxury hotel.

Everyone has a view about what should happen to the old RAH site. APPA's firm view is that no new buildings should be erected. Only the heritage-listed buildings should stay, and that these should be used only for public purposes.

But there is a more fundamental point of view, one that can be shared even by those who don't necessarily support APPA on Park Lands matters. There should be even greater support for the notion that if any new buildings do replace the old RAH, this public land (Park Lands) should not

be commercialised or privatised or leased for profit. It cannot be up for sale. It should remain public.

This is the theme of APPA's new petitions. We are petitioning both Premier Jay Weatherill and Opposition Leader Stephen Marshall to "Keep This Public Land Public."

<https://www.change.org/p/jay-weatherill-keep-public-land-public>

<https://www.change.org/p/steven-marshall-mp-keep-public-land-public>

Will you sign a petition to each of the leaders?



<https://www.change.org/p/jay-weatherill-keep-public-land-public>

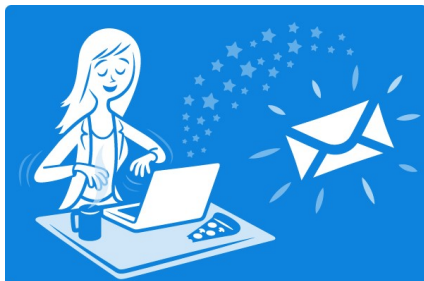
<https://www.change.org/p/steven-marshall-mp-keep-public-land-public>



Park Lands law also requires the Government to prepare a report on how the site can be returned to Park Lands. (See the extract below from the *Adelaide Park Lands Act 2005*) But this law has so far been ignored in a short-sighted push to allow developers to exploit the land for private profit.

23—Steps regarding change in intended use of land

- (1) If land within the Adelaide Park Lands occupied by the Crown or a State authority is no longer required for any of its existing uses, the Minister must ensure that a report concerning the State Government's position on the future use and status of the land is prepared within the prescribed period.
- (2) A report under subsection (1) must include information on the condition of the land and on the action (if any) that would be required in order to make the land suitable for public use as park lands.



Perhaps if you write to Minister Rau, he might explain to you why he has not complied with section 23:

- Hon. John Rau, MP
- Minister for the City of Adelaide
- enfield@parliament.sa.gov.au

"Dear Minister Rau: Please explain why you have not (yet) complied with section 23 of the Adelaide Park Lands Act 2005 in relation to the old RAH site"



Share



Tweet



Forward

QUIETLY CONFIDENT ON HERITAGE LISTING



If you forgot to make a submission on whether the Park Land should be heritage listed, you are, unfortunately, too late. Submissions closed on 29 September. But a week before the closing

date, the Heritage branch of the Environment Department revealed there had been a massive show of public interest.

A week before the closing date, [1,600 submissions had been received, compared to less than a dozen for most heritage listing proposals.](#)

This leaves APPA feeling quietly confident about this once-in-a-generation opportunity to get the many, many heritage values of the Park Lands recognised formally – for the benefit of our children, grandchildren, great-grandchildren, etc.

Here's the submission that APPA made:

<http://archives.adelaide-parklands.asn.au/Submissions%20and%20Letters/APPA%20submission%20on%20heritage%20assessment%202017-08-30.pdf>

So, what happens now?

The nine-member State Heritage Council will evaluate the submissions, as well as an "assessment" of Park Lands heritage values by a firm of heritage architects.

The Heritage Council will then decide to:

- make no decision; or
- provisionally enter the Park Lands as a State Heritage Place, and/or
- recommend to the Minister for Planning, that the Park Lands should be designated as a State Heritage Area, in the Adelaide City Development Plan.

If a decision is made for provisional entry on the South Australia Heritage Register as a State Heritage Place, another three-month public consultation period would follow.

Following this second consultation period, the Heritage Council would consider all submissions and decides whether or not to confirm the provisional entry. This decision is based solely on heritage values. The Heritage Council is unable to allow other issues, such as economic impacts, to influence its decision.

It is likely to be well into 2018, therefore, before any final outcome is announced.



Share

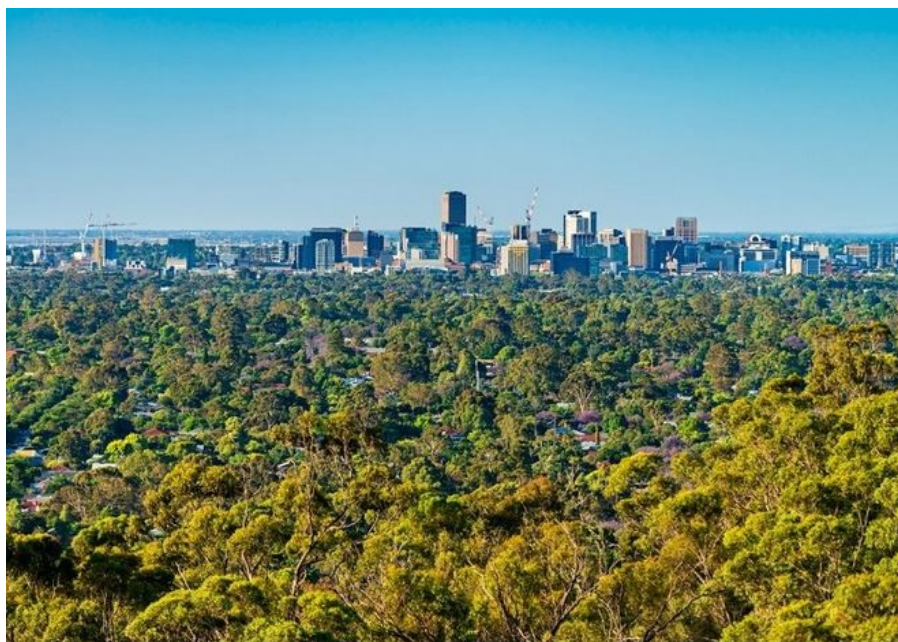


Tweet



Forward

UNSOLICITED PROPOSALS



The City Council carried out a very comprehensive job in 2015 and 2016, consulting widely (as it was required to do) on a new [Park Lands Management Strategy 2015-2025.](#)

While APPA is dubious about some of the strategies outlined in this document (e.g. for new built sports "hubs" that would exclude the public and a continuation of car parking on some areas of the Park Lands) we nevertheless recognise that the [Management Strategy](#), as endorsed by the Council, goes a long way towards protecting the public values of the Park Lands.

At least it would do so, if the Council actually respected it, and allowed the [Management Strategy](#) to guide its decisions.

However, the Council also is encouraging 'unsolicited proposals' from anyone who might have a bright idea, worth at least \$100,000, to use the Park Lands, even in ways that might be inconsistent with the Management Plan.

A recent example is the proposal for a commercial helicopter airport in Park 27 (now recently named as Helen Mayo Park) near the Morphett Street bridge. This is totally inconsistent with the [Management Strategy](#) but it has been fervently promoted by the Council. The next step in the helipad saga will come before the Park Lands Authority on 19 October, and then a recommendation will go to the full City Council for its meeting scheduled for 24 October.

In the meantime, however, the Council has a new tongue-in-cheek ["unsolicited proposal"](#) by Sir [Monterfiore Scuttlebutt](#). in the Adelaide Review. He's proposing to fence off the Park Lands entirely to rake in cash for himself and save the Council millions! Best of all, his proposal seems to fit the Council's Guidelines for handling "unsolicited proposals"

<http://adelaiderreview.com.au/opinion/general-opinion/montefiore-unsolicited-adelaide-park-lands-proposal/>

We just hope that the City Council doesn't take him seriously.



Share



Tweet



Forward

ANOTHER BRICKBAT NOMINATION FOR A PARK LANDS SPOILER



Readers of the e-Gazette may recall that exactly 12 months ago, in our October 2016 issue, we featured a story about the O'Bahn Project receiving the dubious honour of being nominated for a Brickbat Award.

The Australian Civic Trust, has nominated once again structures that relate to the Adelaide Park Lands for the 2017 People's Choice Brickbat. This year, it has been the turn of the new

University buildings on North Terrace to share the dubious honour.

The Trust notes that the buildings that "were built on what was ostensibly Parklands", "cast an ominous shadow over what should be a sunny boulevard". Further, it states that "both the public and the buildings on the city side previously had an aspect to the Parklands as part of Adelaide's original plan but this has now been lost".

The submission concludes with a statement that confirms what APPA has been saying for years: "Lack of adequate regulation and government planning continues to degrade our city and reduce both its amenity for its citizens and its international status as a world-renowned City in a Park".

To vote for your favourite Brickbat, please visit the Australian Civic Trust website here: <http://www.civictrust.net.au/page18.htm>.



Share



Tweet



Forward

WORKS ON THE O-BAHN CITY ACCESS PROJECT TO FINISH LATE 2017



The Controversial project that has defaced Rymill Park in order to save a few minutes for commuters using the O-Bahn is coming to an end.

Works that have as yet not been implemented include:

- Completion of the new Botanic Gardens entry plaza (located between two new car parks).
- Completing works to reinstate the fountain in Rymill Park.
- Site remediation and landscaping works in Rundle, Rymill, Botanic Parks and across the remainder of the project.

This is an extensive amount of 'remediation' to undertake within the time frame.

In the artist's impression above, it can be seen how extensively the busway intrudes into Rymill Park, cutting off north-south access.



Share



Tweet



Forward

PARK LANDS VIDEO OF THE MONTH



WHAT'S ON IN THE PARK LANDS OVER THE NEXT FEW WEEKS

There are always events scheduled in the Park Lands, many of them free, and there are always opportunities to explore the Park Lands on your own, or with friends or family. Take a look at [our picture gallery](#) for hints about interesting spots to visit. This month's featured opportunities are:



[Free community Yoga](#) - Every Friday, 12.30pm - 1.15pm. Pinky Flat, War Memorial Drive, Tarntanya Wama (Park 26). Contact: Millie Walker Phone 0409 928 417



[Scosa "Stampede"](#) Sunday 29 October from 10.30am, Wellington Square. A fun day out to help promote a socially inclusive community for people with disabilities. A 2 km walk or "stampede" with lots of colour and African drum beats before heading back to Wellington Square for an afternoon of live musical performances and multicultural dancers, plus games, family activities, great food and fun.



[Torrens ParkRun - every Saturday 8am](#)

A 5 km timed run, starting from the Torrens Weir. No entry fee, but participants need to register (once only) before their first run. It's non-competitive and purely for enjoyment - just you against the clock, whatever your pace!



[Green Gym" at Wirraninthe \(Park 23\)](#)

An outdoor activity to work on your own health and fitness, while helping to transform and restore areas of the Park Lands for the whole community. A fun **and free** outdoor program run by Conservation Volunteers Australia, targeted at ages 50 to 80. Any Wednesday or Thursday – either morning (10am to 1pm) or afternoon (1:30pm – 4:30pm). Bookings are essential. Call 8352 4111 or email adelaide@cva.org.au



[Free Park Land Walks with Steven Hoepfner.](#)

Saturday 28th October – meet outside E for Ethel Cafe, Melbourne Street at 10.30am. Learn plant identification and the importance of preserving our plant life. Appropriate dress for weather and outdoor walking recommended and please note we may be walking off pathways.



Vegan Festival. Sat 28th October 10am to 9pm, and Sunday 29 October 2017, 10am to 4pm Victoria Square / Tarntanyangga. Two days packed with information, food, and live music to celebrate, promote, and provide education for a compassionate, healthy, and sustainable vegan lifestyle



[Guided walk through Bragg Park / Ngampa Yarta \(Park 5\).](#)

Sunday Nov 12th at 11am. Join APPA member (Park 5 ambassador) Trish Russell for a stroll through a dog owner's favourite part of the Park Lands. The North Adelaide Dog Park is well known, but what secrets lurk in the rest of the Park? Gold coin donation. (Free for APPA members). Wear sturdy shoes for a walk of about 1.4 km. 60 minutes duration. Meet at the corner of Medindie Rd and Le Fevre Tce. Children and dogs (of course) most welcome.



Come and Try Golf – every Saturday 9:30am to 10:00am & 1:30pm to 2:00pm. Kiosk at Par 3 course, off War Memorial Drive, Possum Park / Pirltawardli (Park 1). An opportunity to introduce children to the game of golf in a safe comfortable environment. The sessions involve golfing games, allowing juniors to learn and develop skills while still having fun. Separate sessions designed for (a) 4 to 7-year olds; and (b) 7 to 17-year-olds. If required, equipment can be borrowed.



STADIUM MANAGEMENT AUTHORITY WANTS LIQUOR LICENCE FOR THE PARK LANDS



The Stadium Management Authority – Adelaide Oval (SMA) has applied for a licence to the Liquor & Gambling Commission that will affect the Northern and Eastern side of Adelaide Oval.

This application follows on from a decision made "in Confidence" by the Adelaide City Council (ACC) some time ago. Perhaps, yet again, ACC appears to have capitulated to the ever spreading ambitions of the SMA, which is really an arm of State Government.

At its recent meeting, ACC decided to at least seek to examine what is being proposed by the SMA. It looks like a take-over of the entire area for private events: at the very least, it can be expected that **the whole of the area will be fenced off for the exclusive use of the SMA.**

Objections are possible with the Commissioner for Liquor and Gambling. Paperwork must be completed and lodged by 17th October. Please visit www.cbs.sa.gov.au for more information. We must get as many complaints/objections to the commissioner as possible asap!!!

Also, to register your disapproval of the Adelaide Oval extending its liquor licence to the park lands, please vote at the on-line poll appearing at the following article:

<http://www.adelaidenow.com.au/messenger/city/north-adelaide-residents-object-to-adelaide-oval-liquor-license-application/news-story/caa302faf0c9ad0307f4c1f565aafb4d>



Share



Tweet



Forward

THREE IN A ROW: "EXPRESSIONS OF INTEREST" for SPORTS FACILITIES



For the third month in a row, the City Council is inviting schools and non-profit groups to lodge expressions of interest for sporting facilities in the Park Lands.

In August, it was for facilities in Kurangga (Park 20), now renamed 'Blue Gum Park' between Unley Rd and Peacock Rd. Here's a link to the story in the [August e-Gazette](#).

In September, it was for facilities in Mirnu Wirra (Park 21W) now renamed 'Golden Wattle Park' between Goodwood Rd and Sir Lewis Cohen Avenue. Here's a link to the story in the [September e-Gazette](#).

This month, a similar process is under way again, for the sports fields and facilities in Denise Norton Park/ Pardipardinyilla (Park 2) - home of the Aquatic Centre. See the map above. The sports grounds and a building in that Park (shown in the photo below) are licensed to Blackfriars Priory College at Prospect, who sub-licence to other sporting and community groups.

<https://yoursay.cityofadelaide.com.au/eoi-sportfacilities-park2>

It's a welcome move by the City Council to open up the areas in each of these Parks for any new potential Park licensees to emerge. The Council would rightly be criticised if it simply rolled over existing licensing arrangements without giving other potential users a chance to lodge expressions of interest.

The Council is telling potential interested parties that any proposed use of Denise Norton Park/ Pardipardinyilla (Park 2) should include:

- Multiple clubs and teams/activities
- A diverse range of contemporary outdoor based sporting and athletic activities
- Opportunities for different ages and genders to participate
- Opportunities for people from diverse cultural backgrounds and with a range of abilities
- Local or regional level sport, rather than elite level
- Accommodation for general community use (ie non-club members)
- Co-exist with the informal recreational activity occurring in the Park

APPA endorses these guidelines.



The Council is seeking expressions of interest from schools or community non-profit groups who could make shared use of this area for different types of sport throughout the year. The Council has specified that if any new buildings are proposed, it would be "seeking a reduced and consolidated building footprint."



Share



Tweet



Forward

BRIEFLY, IN OTHER PARK LANDS NEWS



The Adelaide City Council has backed a \$9.8M redevelopment of Tennis SA's Memorial Drive Tennis Precinct.

The project, is only Stage 1 of the "Memorial Drive vision" as described in Tennis SA's website. In this first stage, funded by the Federal Government, the project will include:

- A new outdoor show court and two new match courts;
- A state-of-the-art National Academy training venue that will include all three Grand Slam surfaces (clay, grass and hardcourt);
- A 'Walk of Champions' profiling local tennis legends, and
- Resurfacing of the current match courts.

In future stages, the "Memorial Drive vision" includes:

- Australia's newest tennis complex;
- A new, "all weather arena" with a "Wimbledon style" retractable roof, and
- Spaces for new cafes and offices with potential to accommodate other sports or attract corporate headquarters.

The image depicts an artist's impression of the completed "vision".



The latest news of World Urban Parks, an organisation APPA is proudly associated with, can be found by following the link at the end of this paragraph. Read about the Large Urban Park Award that is being piloted in Europe, the search for a host city for the International Awards for livable communities and more [here](#).

PHOTOS OF THE DAY - RECENT HIGHLIGHTS



From the top:

- a) Dog off-leash area, Yam Daisy Park / Kantarilla (Park 3)
- b) Walking the dog in Brougham Gardens/ Tantutittinga (Park 29) off Brougham Place
- c) Junior soccer, Pelkzer Park / Pityarilla (Park 19) off Greenhill Rd between Unley Rd & Hutt Rd
- d) Wood ducks and cycle commuting, King Rodney Park / Ityamai-itypina (Park 15) between Wakefield Rd and Bartels Rd
- e) Playspace, Bunday's Paddock/Tidlangga (Park 9) Photo from the makers of the play equipment, Prologic.

The Park Lands 'photo of the day' series has been running since May 2014, and **the collection of Park Lands photos now numbers almost 1,300**. We maintain (and gradually grow) more than 40 separate albums: one for each one of our 30 numbered Parks, six squares (and several albums for 'Alienations'). To browse the photos follow the link below to '[Our photos on Flickr](#)'.



APPA on Facebook



@adelparklands



APPA website



Our photos on Flickr



Share



Tweet



Forward

Copyright © Adelaide Park Lands Preservation Association, Inc. [2015] All rights reserved.

[unsubscribe from this list](#) [update subscription preferences](#)

MailChimp