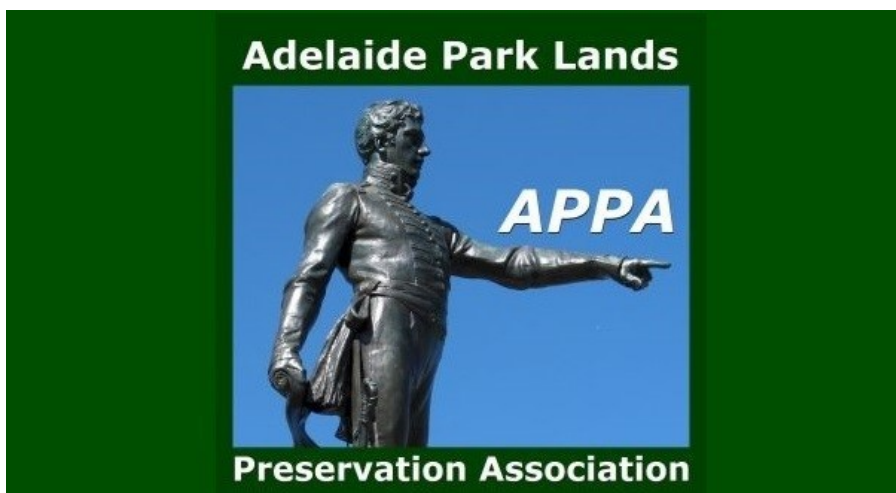


e-Gazette No. 032 - November, 2017. If this email doesn't look right  
(e.g. if there are no pictures) then:

[View this email in your browser](#)



## In this e-Gazette....

- [HELIPAD SCHEMOZZLE? HOW TO MAKE IT RIGHT](#)
- ['PROMOTE PARKS FOR FITNESS' - SAYS PARK 2 HONOUREE](#)
- [CURRENT BATTLEFIELDS - LOSE SOME, LOSE SOME](#)
- [ADELAIDE OVAL LIQUOR EXPANSION? COUNCIL PUSHES BACK](#)
- [HAEMORRHOIDS ARE NOT AS BAD AS CANCER - BUT WE DON'T WANT EITHER](#)
- [PARK LANDS VIDEO OF THE MONTH](#)
- [WHAT'S ON IN THE PARK LANDS OVER THE NEXT FEW WEEKS](#)
- [RATEPAYERS FOOT THE BILL FOR CAFE EXPANSION PLANS](#)
- [TWO BUILDINGS INTO ONE? PRINCE ALFRED COLLEGE AND PARK 9](#)
- [BRIEFLY, IN OTHER PARK LANDS NEWS](#)
- [PHOTOS OF THE DAY - RECENT HIGHLIGHTS](#)

---

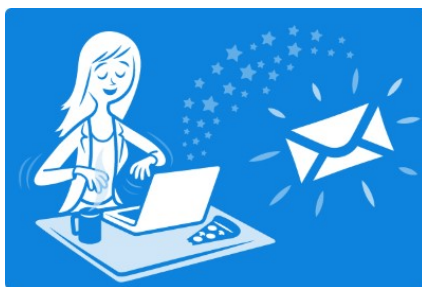
### HELIPAD SCHEMOZZLE? HOW TO MAKE IT RIGHT

APPA [has written to the Lord Mayor, Martin Haese](#), with a practical suggestion to end the embarrassing series of Council gaffes that have have plagued its proposal to put a commercial joyflight helipad in Park 27, next to the Morphett Street bridge.



After a year marked by unnecessary secrecy, flawed decision-making, conflict with two State laws and corrupted public consultation, APPA's letter advises the Lord Mayor that there is really only one viable course of action available: start again, and do it right this time.

A proposal for a helipad in the Park Lands was due to be considered in the Council agenda for its meeting on 24 October. However, the agenda item was withdrawn only hours before the meeting when it was revealed that commercial interests had offered a prize (a helicopter flight, of course) to encourage "yes" votes to the Council's consultation.



Our [letter to the Lord Mayor](#) cites:

- Unnecessary secrecy over the Council's initial selection of its preferred site;
- The Council's decisions being inconsistent with both the *Adelaide Park Lands Act 2005* and the *Local Government Act 1999*;
- Biassed consultation documents;
- Compromised responses to consultation; and
- Flawed evaluation of consultation results.

You can [read the full text of our letter here](#). We are awaiting a reply from the Lord Mayor.

### 'PROMOTE PARKS FOR FITNESS' - SAYS PARK 2 HONOUREE



Denise Norton-Wangel (aged 84) at home overlooking the Park Lands and (inset) representing Australia, as a swimmer, in 1952 at the Helsinki Olympic Games (just before her 18th birthday).

Denise Norton-Wangel is one of a kind. After a lifetime of sporting triumph and success, her name has been assigned to a part of the Adelaide Park Lands, so that future generations will not forget her.

The Adelaide City Council at its meeting last September, [assigned new English names to most parts of the Adelaide Park Lands](#), to complement the existing Kurna names and the Park numbers 1 to 29.

Many of the new English names are those of trees, plants, physical features, or of pioneering South Australians who are long gone. Just one Park has been named after a still-living South Australian - Denise Norton.

Denise is a long-time member of APPA, a staunch advocate for protecting the Park Lands, and promoting them as ideal places to keep fit! She describes both her joy at still-regular cycling trips through the Park Lands to visit North Terrace, and also her frustration at the annual car racing takeover of Victoria Park / Pakapakanthi (Park 16) so near to her home.

"I prefer to go to the city on my three-wheeler bike through the Park Lands.

"I often stop in Rymill Park and have a coffee and feed the ducks and watch the kids in their rowing boats"



Denise Norton enjoying the Adelaide Park Lands on her favourite transport. *"I used to put my youngest grand-daughter in the basket and take her with me, and she loved it!"*

#### **Why Denise Norton Park?**

Denise has been honoured with her name alongside Pardipardinyilla (Park 2) because that's where the Adelaide Aquatic Centre is located. Denise, a champion swimmer, was the first South Australian to represent Australia at the Olympic Games, in any sport. On her historic trip to the 1952 Helsinki Olympics she met Anders Wangel whom she later married. Although Denise and Anders lived in Adelaide (and Denise gained further sporting success in yachting) the family also kept (and still keep) a base in Finland, on a tiny park-like island, fostering Denise's love of parks and trees.



Share



Tweet



Forward

What are all the new Park names?  
APPA has [compiled a list](#) of all the Park names; new and old.  
[Click here](#) to read the changes.

#### CURRENT BATTLEFIELDS - LOSE SOME, LOSE SOME



It can be hard to keep up with all the construction work that is under way, at any one time, in the Park Lands.

A perennial problem for APPA is that after an area of Park Lands has been lost to the latest new concrete canyon, people quickly forget that the area was previously part of the Park Lands, and the battleground shifts onto the next proposed Park Lands alienation.

Accordingly, we frequently find ourselves fighting a rear-guard action to try to stave off whatever is the latest attack on a piece of Park Lands.

How wonderful it would be to reverse the trend occasionally, and claw something back that had previously been lost.

Alas, that's not happening this month. Here's a list of the November 2017 construction zones, though fortunately not all of them represent permanent losses:

#### CURRENT CONSTRUCTION OF PERMANENT LOSSES

- [The O'Bahn busway](#) from ground level next to the lake in Rymill Park / Murlawirrapurka (Park 14) to Grenfell street – due for permanent alienation completion at the end of this year
- [Botanic High School, Frome Road](#), permanently alienating a slice of Park 11 – due for completion early 2019
- [Uni SA's new "Health Innovation building"](#) North Terrace – taken from Park 27 (along with the new RAH, SAHMRI building etc alongside it) – due for completion within a few weeks or sooner)
- The [SA Cricket Association's new three-storey pavilion](#) in Gladys Elphick Park / Narnungga (Park 25) – due for permanent alienation/completion within the next few months

#### CURRENT CONSTRUCTION OF LONG-TERM (but hopefully not permanent) LOSSES

- [Decking on the Adelaide Festival's pontoon/barge](#) in the River Torrens, Elder Park / Tarntanya Wama (Park 26) – to stay in place until at least autumn 2019. The proposed beautification of the barge was supposed to have been completed before the end of the October. Despite this breach of the Adelaide Festival's lease terms, Councillor Ann Moran was unable (on 14 November) to persuade enough of her fellow City Councillors to order the barge's immediate removal.

#### OTHER CURRENT CONSTRUCTION IN THE PARK LANDS

- [Resurfacing of netball courts in Josie Agius Park / Wikaparntu Wirra \(Park 22\)](#) (with the likelihood of a large new sports centre there in the next year or two). APPA has been advised that the resurfacing has destroyed some of the remnant native grasses near the netball courts.
- The [Torrens Rail Junction Project](#) – alienating large swatches of Park 1 and Park 27 – although when eventually finished it is not supposed to be taking any more Park Lands than the existing rail lines.
- A new ["high quality formal garden"](#) being built to ["enhance" Gladys Elphick Park / Narnungga \(Park 25\)](#) not far from the new RAH, to encourage hospital patients to walk in the garden.
- A [community hub with plaza, playground, walking track, and improved community sporting facilities](#) in Pelzer Park / Pityarilla (Park 19). (See picture below in this e-Gazette.)



Share

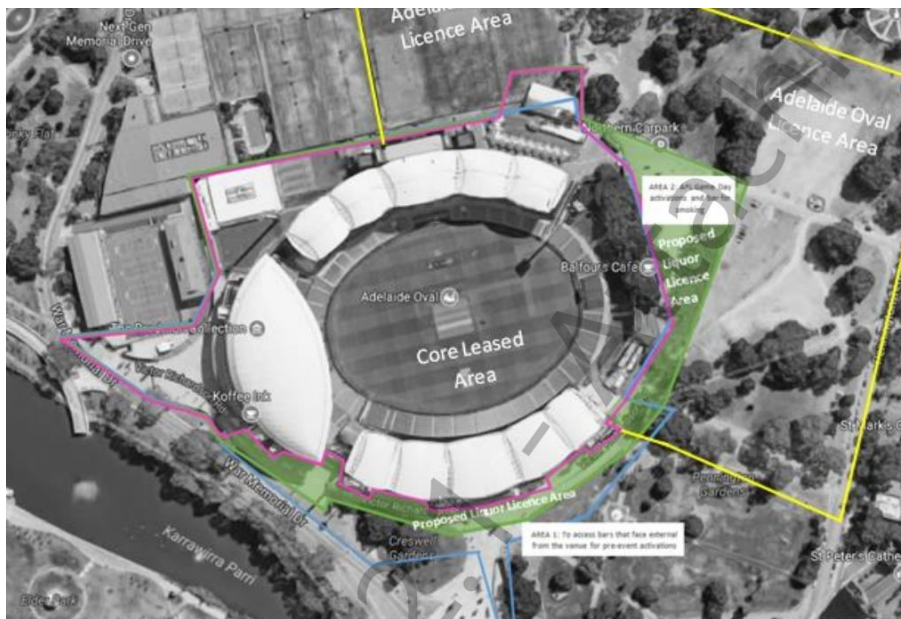


Tweet



Forward

#### ADELAIDE OVAL LIQUOR EXPANSION? COUNCIL PUSHES BACK



The Liquor and Gambling Commissioner will hold a hearing on Monday 27th November to discuss an attempt by the Stadium Management Authority to extend the area of its permanent liquor license around Adelaide Oval.

At present liquor can be sold inside the area marked in pink (above). The Stadium Management Authority wants to extend the area to the parts marked in green, which are paved.

At its meeting on Tuesday 14th November, the Adelaide City Council voted to oppose this change, after hearing from many local residents who did NOT want to see more areas of the Park Lands fenced off and restricted to the public merely to help sell alcohol, and/or facilitate smoking.

The Adelaide City Council doesn't get the final decision. However, as the landlord of this part of the Park Lands, the Council's opposition will be taken into account by the Liquor and Gambling Commissioner.

## HAEMORRHOIDS ARE NOT AS BAD AS CANCER – BUT WE DON'T WANT EITHER

APPA is campaigning to return as much as possible of the old RAH site to Park Lands.

There have been recent suggestions that a new private hotel could be placed into one or more of the heritage-listed buildings on the old RAH site – rather than having a shiny new building erected on the Park Lands.

The heritage-listed buildings there should be used only for public purposes (e.g. a modern art gallery) because they are part of a public heritage. They were built (between 1927 and 1946) on Park Lands.

Yes, a private hotel in these heritage-listed buildings would not be as bad as a shiny new private hotel on Park Lands. Yes, haemorrhoids are not as bad as cancer, but we don't want either.\*

The message to our political leaders is simple: KEEP PUBLIC LAND PUBLIC

If you haven't already, please tell them directly by signing a petition to one or both:

<https://www.change.org/p/jay-weatherill-keep-public-land-public>

<https://www.change.org/p/steven-marshall-mp-keep-public-land-public>

*\* We borrowed this colourful turn of phrase from journalist Helen Razer.*



Share



Tweet



Forward

#### PARK LANDS VIDEO OF THE MONTH



Share



Tweet



Forward

#### WHAT'S ON IN THE PARK LANDS OVER THE NEXT FEW WEEKS

There are always events scheduled in the Park Lands, many of them free, and there are always opportunities to explore the Park Lands on your own, or with friends or family. Take a look at [our picture gallery](#) for hints about interesting spots to visit. This month's featured opportunities are:



**[Australian International Three-Day Event](#)** – Fri Nov 17 to Sun Nov 19. Australia's premier equestrian competition. Dressage, cross-country, show jumping. Spread over three Parks (Rymill Park, Itya-ityina, and Victoria Park, i.e. Parks 14, 15 and 16).

[Click here](#) for the course map, and [click here](#) for ticket information.



**[Feast Festival 'Picnic in the Park'](#)** – Pinky Flat, near cnr War Memorial Drive & Montefiore Road, Sun 26th Nov, 11:00am – 7:00pm. Pre-booking necessary: tickets \$10, children free. Bring your own picnic or buy a hamper there. Bring friends, family and don't forget your dog.



**[Afghan Cameleers exhibition – West Tce Cemetery](#)**

10.30am on Sat 18th, Tues 21st, Sat 25th & Tues 28th Nov. Walk with researcher Pamela Rajkowski OAM through the Afghan Section of West Terrace Cemetery, to learn personal stories of how Afghan cameleers helped open up the interior of Australia.



**[Women's Recreational Running Network](#)** – a “run club” for women under the guidance of a qualified run leader in a non-threatening environment. Free (but you need to register).

- Monday 6pm – corner of East Tce & South Tce – taking in Victoria Park.
- Tuesday 6pm – Uni Loop, cnr of Frome Road & War Memorial Drive
- Thursday 6am – Pinky Flat, across the road from Next Gen gym/Adelaide Oval
- Thursday 6pm – meet at the Rotunda in Elder Park
- Sunday 8am – from the kiosk in Bonython Park



**[Giant chess at Whitmore Square / Iparrityi](#)**

Weekdays 9am to 5pm .Adelaide South West Community Centre has games equipment for free use in the Square. During opening hours you can borrow the key for the Giant Chess set as well as Table Tennis equipment or a Basketball.



**[Guided walk through Bunday's Paddock / Tidlangga \(Park 9\)](#)**

Saturday 9 December 2017 at 10am to 11am. Join APPA member (& Park 9 Ambassador) Rosemary Luke for a stroll around this lesser-known but well-used part of the Park Lands. Learn about its past and present management. Visit the sporting field (adopted by Prince Alfred College) tennis and basketball courts, a very new creative Play Space, and pockets of replanted native vegetation



Share



Tweet



Forward

### RATEPAYERS FOOT THE BILL FOR CAFE EXPANSION PLANS



The Adelaide City Council has approved spending \$50,000 of ratepayers money on a "concept design and cost estimate" to allow the expansion of a private cafe on the Torrens Riverbank in Karrawirra (Park 12)

At its meeting on 24 October, the Council approved in principle new construction alongside the historic Lounders Boat Shed. Earlier this year the building (dating from 1913) was converted to a cafe. The new works are intended to reinstate a former pier, original heritage lighting and associated landscaping and paving, as well as provide additional seating for cafe patrons.



Share



Tweet



Forward

### TWO BUILDINGS INTO ONE? PRINCE ALFRED COLLEGE AND PARK 9



After two years of discussions, consultations and haggling, it appears that agreement has been reached for a new sports and community building to go into what is now known as 'Bundey's Paddock' i.e. Tidlangga (Park 9) above.

The sporting field in this park, bounded by MacKinnon Parade and Bundeys Rd is used for both football and cricket by Prince Alfred College and also the PAC Old Collegians Association.

For some time the PAC interests have been keen to upgrade the admittedly outdated old change rooms/toilet block and a so-called 'tractor shed' near Hackney Rd. See the pictures below.



However, debate over the past two years has been about how large and how obtrusive any new building might be, and for what purposes (private or public?) it might be used. Both APPA and some determined residents of MacKinnon Parade objected to the PAOC's grand plans for a much larger building containing a proposed 'function centre'.

The two existing buildings have a combined footprint of 229 square metres. The PAC interests wanted permission to build something about twice this combined size, with rooms for quiz nights, presentations, a liquor licence etc.

However at its meeting on 19 October the Park Lands Authority approved (in principle) something relatively smaller, but still bigger than the existing buildings, described as:

*"...a minimum sized fit-for-purpose local community club sports facility with a maximum footprint of 375sqm including the provision of a small community space and public toilets to service the adjacent community activity hub."*

New designs are to be drawn up, to meet this description and the community will be consulted again on a proposed lease.



Share



Tweet



Forward

**BRIEFLY, IN OTHER PARK LANDS NEWS**



Entries are about to open for the \$33,000 Adelaide Park Lands Art Prize, 2018.

Finishing touches are being put to our [Art Prize web site](#).

Entries open from Friday 17 November.

### NEW DOG PARK

The Adelaide City Council's second fenced dog park has been opened in Pelzer Park/ Pityarilla (Park 19) off Glen Osmond Rd near South Terrace.

The official opening of the dog park on 21 October was advertised as the first step in the "\$5 million revitalisation" of Park 19.



### MEANWHILE, RIGHT ALONGSIDE THE NEW DOG PARK....

APPA has previously commended the City Council and the State Government for jointly funding improved [new community facilities](#) in this Park.



Construction is under way on "a community plaza ... plus landscaped promenades for improved cycling and pedestrian access, and community courts, in addition to lighting, shelter, public art, signage and other amenities"

You can read about the plans for this Park here:

<http://yourfutureadelaide.com.au/projects/pityarilla-activity-hub/>

### CREEK STABILISATION - STAGE ONE COMPLETED

Work has been completed on the first stage of works to combat erosion of the South Park Lands Creek, and prevent road flooding.

Contractors have left Peppermint Park / Wita Wirra (Park 18) and will reappear shortly, for the next stage, in Carriageway Park / Tuthangga Park 17.

For more detail on these works, see this Council link:

<https://yoursay.cityofadelaide.com.au/south-parklands-creek-rehabilitation/>



### WOULD YOU SUPPORT THIS IN BOTANIC PARK?

Voting closes next Monday (20th November) on proposed projects in the State Government's ['Fund My Neighbourhood'](#) initiative.

If you haven't voted already, you can choose between a wide range of proposed initiatives within a five kilometre radius of your home (or any other specific area you choose, such as the Park Lands).

There are more than 1,600 proposed projects throughout the State. One of the proposals is for amphitheatre outdoor seating (such as pictured below) on the edge of Botanic Park.

To vote, visit <https://fundmyneighbourhood.yoursay.sa.gov.au/> before 5pm on Monday 20th November.



### NO CHANGE TO LICENSEES IN PARK 20

At its meeting on 24 October the Adelaide City Council gave the go-ahead to renew licenses for Pulteney Grammar School and Adelaide Harriers Athletic Club in Blue Gum Park / Kurangga (Park 20).

The Council had earlier called for expressions of interest from any other sporting or community groups.

The Council Chief Executive now has delegated authority to negotiate with Pulteney Grammar and Adelaide Harriers about possible redevelopment of the existing dilapidated sports buildings and removal of the unsightly shipping containers that are used for sports equipment storage in the Park.



### \$200,000 for PARK LANDS, MERELY "DESIGN" ????

APPA is cautiously optimistic that [proposed new features in Denise Norton Park /Pardipardinyilla \(Park 2\) and Yam Daisy Park /Kantarilla \(Park 3\)](#) might attract more people into these Parks. However we note that the Government is suggesting only funds for "design". And we would hate new "designs" that lead to destruction of the few isolated areas of remnant native vegetation in those Parks.

What would be great would be some explanatory or interpretive signage to help visitors identify the trees and bushes, especially species that are native to the Adelaide plains.



A great example (in King's Park, Perth) of the type of signage that would increase people's appreciation of the Adelaide Park Lands.

#### EXPAND THE AQUATIC CENTRE?

The State Aquatic Centre at Marion, which cost more than \$100 million, is intended to be the premier facility in South Australia for hosting national and international swimming competition.

However in a surprising move, the Adelaide City Council wants to usurp the State Aquatic Centre's role. The Council voted unanimously on Tuesday 14 November to "explore opportunities with the State Government and/or Federal Government for funding potential upgrades, re-development or replacement facilities".

Given the difficulty that was experienced over many years, getting Federal, State and local government all jointly agreeing to fund the State Aquatic Centre at Marion, we think the chance of doing the same thing again, in Denise Norton Park / Pardipardinyilla (Park 2) is remote.

The Council's decision is probably just pie-in-the-sky, but it is disturbing that not a single Councillor resisted this tenuous thought-bubble about yet another potential even larger encroachment into the Park Lands.



Make it larger? Take away more Park Lands? OK in principle say Councillors.

#### PHOTOS OF THE DAY - RECENT HIGHLIGHTS



From the top:

- a) Council revegetation project in Ellis Park / Tampawardli (Park 24)
- b) Flowers in Peppermint Park /Wita Wirra (Park 18) off South Tce
- c) Family of wood ducks out for a walk in the Botanic Gardens, Park 11.
- d) Junior cricket also in Ellis Park / Tampawardli (Park 24) off Glover Ave

The Park Lands 'photo of the day' series has been running since May 2014, and **the collection of Park Lands photos now numbers more than 1,300**. We maintain (and gradually grow) more than 40 separate albums: one for each one of our 30 numbered Parks, six squares (and several albums for 'Alienations'). To browse the photos follow the link below to '[Our photos on Flickr](#)'.



APPA on Facebook



@adelparklands



APPA website



Our photos on Flickr



Share



Tweet



Forward

Copyright © Adelaide Park Lands Preservation Association, Inc. [2015] All rights reserved.

[unsubscribe from this list](#) [update subscription preferences](#)

MailChimp