

[Subscribe](#)

[Past Issues](#)

[Translate ▼](#)

e-Gazette No. 040 - July, 2018.

If this email doesn't look right (e.g.  
if there are no pictures) then:

[View this email in your browser](#)

## PARK LANDS CELEBRATED BY ART PRIZE OPENING NIGHT CROWD



## Other stories....

- [STUNNING ARRAY of ART WORKS HIGHLIGHTS ADELAIDE'S HERITAGE](#)
- [A NEW COMMERCIAL BUILDING IN THE PARK LANDS](#)
- [OLD RAH SITE - ONLY TOKEN NOD TO PARK LANDS](#)
- [VIDEO OF THE MONTH - RUNDLE PARK / KADLITPINA \(Park 13\)](#)
- [PULTENEY GRAMMAR - BACK TO THE DRAWING BOARD](#)
- [FESTIVAL PLAZA AND CASINO - WORK NOW UNDER WAY](#)
- [WHAT'S ON IN THE PARK LANDS OVER THE NEXT FEW WEEKS](#)
- [HERITAGE LISTING? STILL BEING CONSIDERED](#)
- [BRIEFLY, IN OTHER PARK LANDS NEWS](#)
- [PHOTOS OF THE DAY - RECENT HIGHLIGHTS](#)

## STUNNING ARRAY of ART WORKS HIGHLIGHTS ADELAIDE'S HERITAGE

The Lord Mayor, Martin Haese, the Minister for Child Protection Rachel Sanderson MP, Festival Centre CEO Douglas Gautier and Kaurna elder 'Uncle' Lewis Yerloburka O'Brien were all part of the official opening this month of the 2018 Adelaide Park Lands Art Prize exhibition.

But the stars of the opening night were the finalists, whose 74 works are on display at the Festival Centre foyer until Sunday 26 August.



Some of the winning artists with their work: From top left:

- Christopher Meadows "*Spheres and Reflections*" [First Prize winner]
- Sally Parnis "*Summer Solstice 2017: Drawing the Adelaide Park Lands*" (video) [Commended]
- Graham Davis "*Adam Encounters the Fingers of Light*" [Commended]
- Taya Stocks "*Purple Swamphen - Parklands Royalty*" [Commended]



Subscribe

Past Issues

Translate ▼



From top left:

- Peter Walker receiving a Commendation certificate from the Lord Mayor, Martin Haese for his sculpture "Trigonometry" [inset]
- Some of the opening night crowd
- Ellen Trevorrow, Bruce Trevorrow, and fellow artists with their collaborative work "Ngori" (Pelican) [Commended]
- Casting a vote for the "People's Choice" award, to be announced on Saturday 25 August

ALL PHOTOS ABOVE BY DON OSWALD

Part of the success of the evening can be attributed to the expert judging panel: Llsa Slade, Edward James and Roy Ananda. The judges remarked on the high quality of most of this year's entries and found it hard to whittle down the list to a select group of finalists – even harder to choose the winners.

Subscribe

Past Issues

Translate ▼



July, many of the art works on display have been sold, reaping benefits for both the artist and a small commission for APPA. Many others are still available, so make a date to view them before the exhibition ends on Sunday 26 August. The exhibition has long opening hours (any time that the Festival Centre is open).

A full list of the prize winners, and pictures of all the finalist art works are available through this link: [www.adelaide-parklands.asn.au/art-prize](http://www.adelaide-parklands.asn.au/art-prize)

***APPA hopes that the Art Prize exhibition will focus attention on our world-unique heritage and encourage greater respect and appreciation of the Adelaide Park Lands.***



Share



Tweet



Forward

## A NEW COMMERCIAL BUILDING IN THE PARK LANDS



[Subscribe](#)[Past Issues](#)[Translate ▼](#)

Earlier this year APPA [praised the idea](#) of building a 'high ropes adventure course' in Blue Gum Park / Kurangga ([Park 20](#))

We took the view that the project was likely to appeal mostly to relatively young people. By exposing them to the treetops, with stunning views of the city to the north, it might well inspire at least some of the climbers to a greater understanding and respect of the role of the Park Lands, so close to our capital city.

However, at the outset [we expressed reservations](#) about why the proposal needed to include any new building in the Park Lands. The City Council's consultation on this proposal last year promised that:

*"...public access to be retained at ground level at all times, excluding approximately 60sqm of ground space. This area will be required for a removable prefabricated building consisting of storage and administration areas, staff/customer toilets and retractable shaded areas for customer seating. This will act as the entrance and exit to the course."*

Did the City Council push back or resist the developer's request for a new building, to alienate Park Lands? There is no evidence that they did. No alternative sites for storage or administration were canvassed in [last year's public consultation process](#).



We can't get inside the construction fence to check the dimensions but what's pictured above looks like the size of three or four shipping containers, which would seem to be much greater than 60 square metres.

When we visited on Wednesday 11 July, concrete was being pumped into this previously beautiful location, for the "removable" building alongside the South Park Lands Creel.



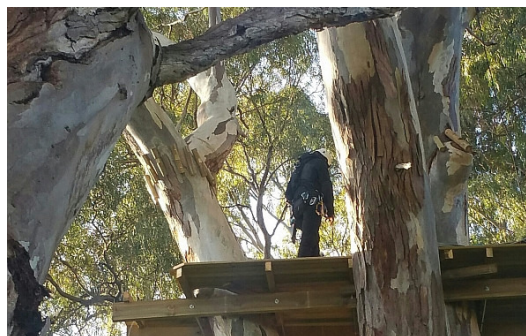
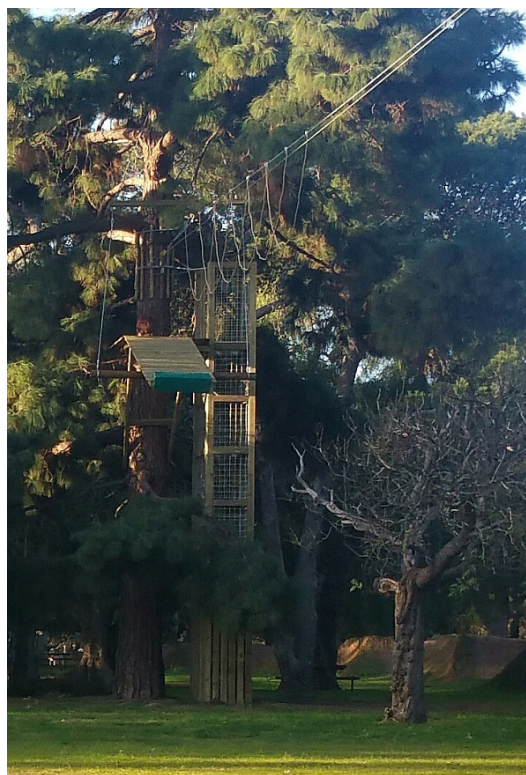
[Subscribe](#)[Past Issues](#)[Translate ▼](#)

administration could have been located just a few metres away on the other side of Greenhill Road, where there is vacant space for lease.

It would have been a mark of respect for the Park Lands to have storage of equipment and registration of participants only 40 metres away from the tree climb course, for example here on the Unley side of Greenhill Road.

But no, the Park Lands have been sacrificed, yet again. A lease of eight years has been signed.

Here's some shots of how the actual adventure course is shaping up. There are 'flying fox' adventure cables about 10 metres above ground, and stretching about 50-60 metres between treetops. Several platforms a similar distance above the ground will be staging points for the climbers.







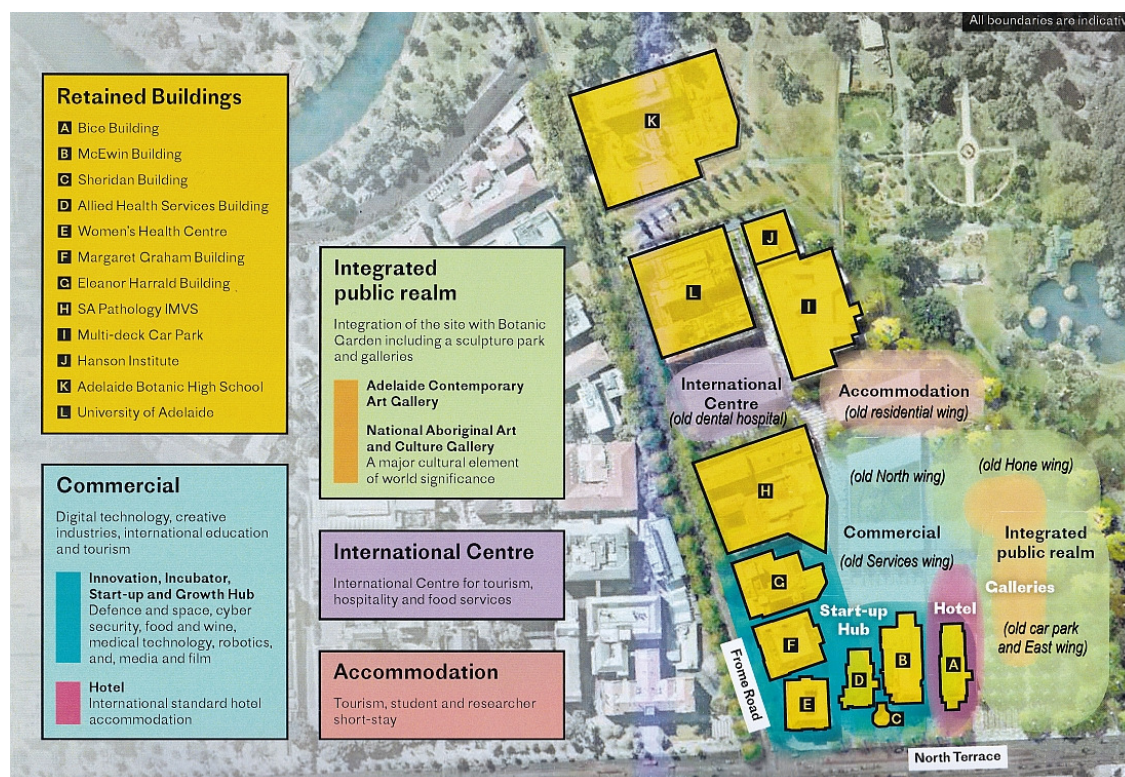
Share



Tweet



Forward

**OLD RAH SITE – ONLY TOKEN NOD TO PARK LANDS**

After a decade of doubt, this appears to be the State Government's decision on what is to become of the former Royal Adelaide Hospital site, on [Park 11](#).

Controversial new uses for the site include:

- a "commercial" area, marked in blue;
- a hospitality and catering school on Frome Road replacing the old Dental Hospital;
- residential accommodation, replacing the old hospital's residential wing; and
- and an international hotel on North Terrace in the old 'Bice' building.

Surprisingly, a large number of existing buildings including Adelaide University's abandoned former medical school are marked for retention (at least for now.)

In this plan, there is no acknowledgement of the land's status as Gazetted Park Lands. The so-called "integrated public realm" is intended to accommodate not one, but two new art galleries. Any leftover skerrick of land supposedly would "integrate" with the adjacent Botanic Gardens.

This mish-mash of private and public uses represents a tragic loss of a once-in-a generation opportunity to restore part of the world's only city-encircling Park Lands.

**Subscribe**

**Past Issues**

**Translate ▼**

By trying to appease a variety of sectional interests, the plan falls into mediocrity, failing to capitalise on Adelaide's priceless advantage over every other city in the world.

Demolition of the Hone Wing and the Cobalt building has been completed. (See pic below.)



We've written to Mr Marshall directly about this. To make this point even clearer, we've dissected the policy that the Liberal Party took to the March 2018 State election. We've pointed out how incongruous it is that no part of the Liberal policy provides for returning ANY of the old RAH site to Park Lands. Read our letter to the Premier [here](#).

Whether you want the site returned entirely to Park Lands, or whether you support some new public buildings on the site, there is a fundamental principle at stake; a line in the sand that must not be crossed by any State Government.

For any new buildings on the former RAH site, this public land (part of [Park 11](#)) should not be commercialised or privatised. Unfortunately, the plan above does allow for exploitation of the much of the site for private profit.

This is a contravention of the public trust on which this land is held, as recognised in the [Adelaide Park Lands Act 2005](#).



[Subscribe](#)

[Past Issues](#)

[Translate](#) ▼



If you haven't already, then please sign the petition:

<https://www.change.org/p/steven-marshall-mp-keep-public-land-public>

and/or TAKE ACTION:

[www.adelaide-parklands.asn.au/take-action](http://www.adelaide-parklands.asn.au/take-action)



Share



Tweet



Forward

**VIDEO OF THE MONTH - RUNDLE PARK / KADLITPINA (Park 13)**



*Park 13 is known as the annual venue for the "Garden of Unearthly Delights" during the Fringe Festival but did you know it hosted air raid shelters in World War Two?*

This video highlights the location of our next [Guided Walk on Sunday 12 August](#).

Catch up on any of our earlier Park videos at our YouTube channel:

[https://www.youtube.com/channel/UCBBBQLY6as\\_sQv0BoQm69Rw/videos](https://www.youtube.com/channel/UCBBBQLY6as_sQv0BoQm69Rw/videos)

We're gradually building, in numerical order, a video guide to all parts of the Adelaide Park Lands.

The next one, due for release in the August newsletter, will be **Rymill Park / Murlawirrapurka (Park 14)**

## PULTENEY GRAMMAR - BACK TO THE DRAWING BOARD

Pulteney Grammar School's ambit claim to "expand our campus" onto Blue Gum Park / Kurangga ([Park 20](#)) has been knocked back by the Adelaide City Council.



As we revealed in [last month's newsletter](#), the School (along with the Adelaide Harriers Athletic



**Subscribe**

**Past Issues**

**Translate ▼**

1,400 square metres, including an office, a gym, storage facilities and a multi-function space that the City Council documents had described as potential classrooms. The two buildings were proposed to replace several existing small sheds that together have a combined total floor area of 572 square metres.

First, the Park Lands Authority on 21 June and then the City Council on 26 June both advised Pulteney Grammar School and Adelaide Harriers to think again about the extent of their plans. The Council's resolution told the School and the Harriers to:

*"...revise the concept design to significantly reduce and so minimise the size and impact, and provide two alternative concept proposals for the buildings"*



Several days after the Council vote, the Lord Mayor Martin Haese penned [an opinion column for The Advertiser](#), in which he argued that:

*"...in the Adelaide Park Lands ...there are many ageing Besser brick clubhouses and change facilities from the 1960s and 70s used daily. ...The hundreds of sporting organisations which use our parklands for training and matches deserve better. "*

[Our comments were posted on-line](#), in reply to the Lord Mayor:

*The Lord Mayor makes some good points but there is more than one issue involved here. Certainly sports can and should be encouraged, and many ageing facilities in the Adelaide Park Lands could do with improvement. We agree there are opportunities to consolidate a variety of ill-equipped poor-standard sheds into fewer better equipped sheds that a number of sporting clubs might be able to share. You can see some examples at [www.adelaide-parklands.asn.au/alienations](http://www.adelaide-parklands.asn.au/alienations)*

*The other side of the coin is that some schools and sporting clubs want to have not just sporting facilities but also their own office, function room, bar, kitchen, gym and storage rooms – perhaps even a classroom or two. Such demands, if accepted, would further erode the public domain and effectively privatise more areas of the irreplaceable Park Lands.*

*In each case, a sensible balance needs to be struck. There must be a presumption in favour of public, not private use, so that those seeking to secure private tenure of new or old Park Lands buildings must explain how they will minimise any restriction on public access.*

[Subscribe](#)

[Past Issues](#)

[Translate](#) ▼



Pulteney Grammar School has dropped references on its website to "expanding our campus" onto [Park 20](#) but it is still using this infographic on its web site, as it develops new plans.



Share



Tweet



Forward

**FESTIVAL PLAZA AND CASINO - WORK NOW UNDER WAY**



[Subscribe](#)[Past Issues](#)[Translate ▼](#)

The long-feared expansion of the Adelaide Casino into Festival Plaza and onto Elder Park is now under way.

Few people realise that Festival Plaza is part of the Park Lands. It has not been well-managed as open space, but that is no reason to hand over any part of it to private interests. It is a crying shame to see public land, which could have been re-configured as Park Lands, disappearing in favour of the multi-billion dollar gambling industry.

<https://indaily.com.au/news/2018/06/25/construction-begins-adelaide-casino-expansion/>



Share



Tweet



Forward

## WHAT'S ON IN THE PARK LANDS OVER THE NEXT FEW WEEKS

There are always events scheduled in the Park Lands, many of them free, and there are always opportunities to explore the Park Lands on your own, or with friends or family. Take a look at [our picture gallery](#) for hints about interesting spots to visit. This month's featured opportunities are:

[Subscribe](#)

[Past Issues](#)

[Translate ▼](#)



[championship](#) - Sunday 22 July 11:00 AM - 2:30 PM Bonython Park / Tulya Wardli (Park 27). Although the main competition requires registration (by Wed 18th July) there's also a one-kilometre Mum's & Dad's race and a FREE 1km Open Fun Event. Click the pic for more details.



[Skating at Victoria Square](#) - Every day and evening, until Sunday 22 July. Children from \$18, Adults from \$24. For those who need a little assistance on the ice, there is a world-first "Kanga skate aid" keeping skaters balanced. Alongside the rink: you'll find rides, ice slides, a jumping castle, ferris wheel, and food and drink options Click the pic for more details.



[Bob Dylan & His Band](#) Under a Grand Marquee in Bonython Park / Tulya Wardli (Park 27) Saturday 11 August- 5:30 PM -10:00 PM . Share an encounter with one of the most enduring and influential musical legends of the modern era, with a songbook spanning six decades. One performance only. Note: venue has changed from Botanic Park to Bonython Park. Click the pic for more details.



['One Culture' soccer for people with disability](#)

Saturday 21 July 10am to 4pm at Victoria Park / Pakapakanthi (Park 16).

An inclusive 5-a-side and 7-a-side outdoor football (soccer) competition for players living with a disability and/or integration difficulties. Register your team: minimum 7 players / maximum 10 players. Free BBQ, music and awards. Click the pic for details.



[Corporate Cup](#) - Fortnightly commencing Wednesday, 1 August through to 24 October 2018. Choice of times (morning, lunch or late afternoon) and a choice of distances (2.2km to 7.2 km)

A course along the River Torrens - starting in Victoria Drive opposite the Torrens Parade Ground in Red Gum Park / Karrawirra (Park 12). Click the pic for details.



Subscribe

Past Issues

Translate ▼



[Kadlitpina \(Park 13\)](#) Sun 12 August 2.00pm to 3.30pm. Gold coin donation. (Free for APPA members). Meet at the corner of East Tce and North Tce at the Light Horse memorial (pictured). Children and dogs most welcome. Click the photo for details.



Share



Tweet



Forward

## HERITAGE LISTING? STILL BEING CONSIDERED



A "heritage assessment" of the Adelaide Park Lands and City Squares for State heritage-listing has been completed by consultants Dash architects.

However, the assessment report is yet to be considered by the SA Heritage Council. It will be released following the Council's consideration later this year.

There were more than 1,700 responses, last year, on the question of whether the Park Lands should be heritage listed. Surprisingly, the State Government did not make a formal submission to [the YourSAY consultation/survey](#).

Heritage South Australia has commenced consulting with State and local government agencies about future management of the Adelaide Park Lands, if it were to be State heritage-listed.

Subscribe

Past Issues

Translate ▼

Read more about this via the link on our 'Current issues' page:  
<http://www.adelaide-parklands.asn.au/current-issues/>



Share



Tweet



Forward

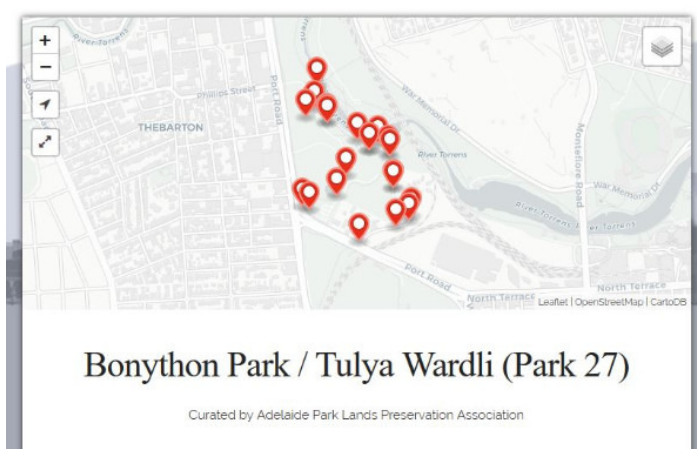
## BRIEFLY, IN OTHER PARK LANDS NEWS



**World Urban Parks** (of which APPA is a member) has handed out its first [Large Urban Parks Awards](#). These awards recognise the quality of Parks, the skills of the people who manage them and the value they bring to the cities they serve. The inaugural "Gold" award went to Centennial Park in Sydney:

*"for its well managed and protected mix of rich nature, well preserved heritage and provision of a good range of activities, in cooperation with the community in the heart of the densely populated inner Sydney."*

APPA will be lobbying to get the Adelaide Park Lands recognised in future awards.



### Trail guide for Bonython Park now available

In co-operation with the National Trust, APPA is building a collection of "trail guides" so that you can have a Guide in your pocket when you take a walk through parts of Adelaide's Park Lands.

You can read the commentary or have it read to you, as an audio guide as you walk from point to point. The latest addition is [the guide to Bonython Park / Tulya Wardli \(Park 27\)](#).

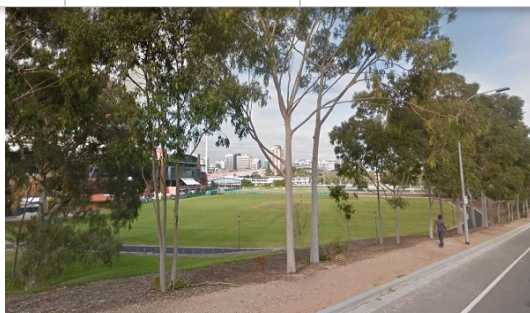
It's best experienced with the National Trust's smartphone app "Adelaide City Explorer" and some earphones as you walk.



[Subscribe](#)

[Past Issues](#)

[Translate ▼](#)



A number of North Adelaide residents are not happy about a major concert being planned for this area outside the walls of the Adelaide Oval.

The Stadium Management Authority has been given approval to host a concert, for an unnamed international act, to perform at this 'Oval No.2' in November 2019.

Read more [here](#).



### Disappointing lack of response from Premier or Minister

On 9 April 2018 we wrote to Minister Stephan Knoll (who has responsibility for the *Adelaide Park Lands Act 2005*) seeking a meeting. Read our letter to Minister Knoll [here](#).

On 12 May 2018 we wrote to the Premier regarding the former RAH site. Read our letter to the Premier [here](#).

At the date of this newsletter, neither the Premier nor the Minister had yet replied. We have just written to both of them again, as a reminder!



### New membership year commences. Are you on board?

Congratulations to more than 100 APPA members who've already renewed their membership for the 2018-19 year and received their membership certificate.

We rely almost exclusively on annual membership fees to continue our Park Lands advocacy, so if you haven't already, please consider putting your money where your mouth is and backing APPA to keep up the Park Lands fight. Details here: [www.adelaide-parklands.asn.au/membership](http://www.adelaide-parklands.asn.au/membership)

As a financial member of APPA, you get:

- the priceless satisfaction of supporting APPA's work;
- free participation in our [monthly guided Park Lands walks](#);
- eligibility to become a Park Ambassador and lead an annual [guided walk through one Park](#);
- the responsibility to help guide APPA's activities through the Annual General meeting; and
- a printable PDF membership certificate (see above).

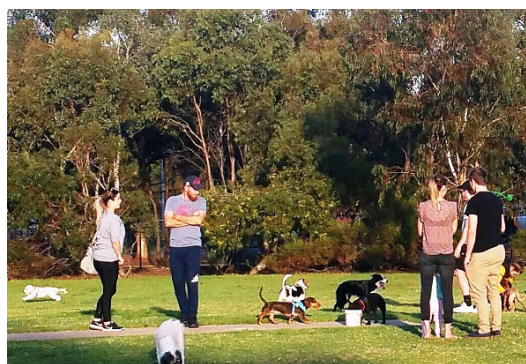


[Subscribe](#)

[Past Issues](#)

[Translate](#) ▼

## PHOTOS OF THE DAY - RECENT HIGHLIGHTS



From the top:

a) School football at King Rodney Park / Ityamai-itpina ([Park 15](#))



**Subscribe**

**Past Issues**

**Translate ▼**

- c) Junior soccer in Mary Lee Park ([Park 27B](#)) near Park Tce at Bowden
- d) School lacrosse in Lefevre Park / Nantu Wama ([Park 6](#)) off Robe Tce
- e) North Adelaide dog park in Bragg Park / Ngampa Yarta ([Park 5](#))

The Park Lands 'photo of the day' series has been running since May 2014, and **the collection of Park Lands photos gathered over four years now numbers over 1,500**. We maintain (and gradually grow) more than 40 separate albums: one for each one of our 30 numbered Parks, six squares (and several albums for 'Alienations'). To browse the photos follow the link below to '[Our photos on Flickr](#)'.



APPA on Facebook



@adelparklands



APPA website



Our photos on Flickr



Our videos



Share



Tweet



Forward

Copyright © Adelaide Park Lands Preservation Association, Inc. [2015] All rights reserved.

[unsubscribe from this list](#) [update subscription preferences](#)



mailchimp