

[Subscribe](#)

[Past Issues](#)

[Translate](#) ▼

e-Gazette No. 041 - August, 2018. If this email doesn't look right
(e.g. if there are no pictures) then:

[View this email in your browser](#)

THREATENED SPECIES IDENTIFIED IN PARK LANDS



Other stories....

- [BIODIVERSITY FAUNA SURVEY REVEALS HIDDEN TREASURES](#)
- [CONSTRUCTION BULLETIN - AUGUST UPDATE](#)
- [STATE GOVERNMENT DECLARES WAR ON PARK 26?](#)
- [PARK LANDS TARGETED FOR NEW WOMENS & CHILDRENS HOSPITAL](#)
- [VIDEO OF THE MONTH - RYMILL PARK / MURLAWIRRAPURKA \(Park 14\)](#)
- [ART PRIZE - WHO WILL BE THE "PEOPLE'S CHOICE"?](#)
- [RESIDENTS ASSOCIATIONS: CARE FOR PARKS & NEIGHBORHOOD](#)
- [WHAT'S ON IN THE PARK LANDS OVER THE NEXT FEW WEEKS](#)
- [LIQUOR LICENSING OUTSIDE ADELAIDE OVAL - APPROVED](#)
- [BRIEFLY, IN OTHER PARK LANDS NEWS](#)

BIODIVERSITY FAUNA SURVEY REVEALS HIDDEN TREASURES

More than 250 species of animals, birds, reptiles, fish and insects (including two endangered species) have been noted during a recent survey of nine locations in the Adelaide Park Lands.

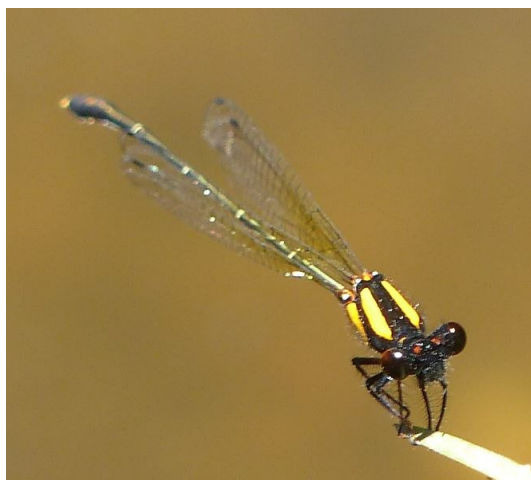
The Nature Glenelg Trust was commissioned by the City Council to survey biodiversity in the Park Lands.

Among the highlights include sightings of the:

- vulnerable eastern water skink (pictured above) in [Park 23](#) and [Park 27](#);
- two damselflies: the "Orange threadtail" and the "Gold-fronted river damsel" both in [Park 27](#) (pictured below); and
- the yellow-tailed black cockatoo.

Congratulations to Bryan Haywood of the Nature Glenelg Trust for his work on the survey and our thanks for his permission to reproduce these photos. Read Bryan's report with more photos here:

<http://natureglenelg.org.au/biodiversity-in-the-heart-of-the-city-adelaide-parklands-fauna-survey-update/>



[Subscribe](#)
[Past Issues](#)
[Translate ▼](#)


The rare grassland copper butterfly found in Park 16



Coincidentally, ABC news recently reported sightings of an unusual white magpie in the northern Park Lands (probably [Park 6](#).)

The magpie is "leucistic" (not albino). More details here: <http://www.abc.net.au/news/2018-07-22/what-is-a-leucistic-magpie/10019352>

It hardly needs saying, but we'll say it anyway: The existence of this biodiversity on the doorstep of our CBD is yet one more reason to protect the world-unique Adelaide Park Lands.

Please [TAKE ACTION](#) to help us protect the Park Lands from the [many threats they face](#).


[Share](#)

[Tweet](#)

[Forward](#)

CONSTRUCTION BULLETIN - AUGUST UPDATE



In addition to the [hundreds of Park Lands sites](#) that have been lost over the decades to buildings or bitumen, there are an additional four sites where construction to reduce the Park Lands is currently underway. Every year the losses continue.

It's disappointing that media coverage of these construction sites rarely acknowledges that they are encroaching upon or diminishing Park Lands.

The State Government invited TV cameras into the Botanic High School construction site on Sunday 29 July. The TV coverage that evening obligingly featured excited prospective students and progress with construction, without recognition of the loss this new building has caused to [Park 11](#).

We tweeted a correction:

Subscribe

Past Issues

Translate ▼

**Adelaide Park Lands** @adelparklands · 14h

Disappointing that this story failed to acknowledge the destruction of Park Lands - the new building taking land away from adelaide-parklands.asn.au/park-11

**Candice Prosser** @CandiceProsser

The Premier @marshall_steven tours the new Adelaide Botanic High School site with Education Minister @JohnGardnerMP, local member @AdelaideMP, the school's new Principal and a group of students.



The other places where construction is under way are (below, from top left):

- Casino expansion onto Festival Plaza – part of Tarntanya Wama ([Park 26](#))
- The high ropes adventure course admin/office building in Blue Gum Park/ Kurangga ([Park 20](#)); and
- The two-storey Adelaide Comets, Western Districts Athletics clubrooms and function rooms in Ellis Park / Tampawardli ([Park 24](#))



[Subscribe](#)

[Past Issues](#)

[Translate](#) ▼



Share



Tweet



Forward

STATE GOVERNMENT DECLARES WAR ON PARK 26?



[Subscribe](#)
[Past Issues](#)
[Translate ▼](#)


The State Government appears to have declared war on Tarntanya Wama (Park 26) the central iconic part of the Adelaide Park Lands (pictured): www.adelaide-parklands.asn.au/park-26

In exclusive comments to 'The Advertiser' State Government Minister David Spiers (Minister for the Environment) revealed that the Government wanted to “slash red tape” that might hinder commercial development of [Park 26](#):

“The State Government is reviewing all legislation in this area with the view to slashing red tape.” he said.

“There has been over \$1 billion of private investment in the Riverbank precinct with the Casino, Walker Corporation and Festival Centre projects. The new State Government will continue to support these projects and will be seeking to attract more investment to further activate the Riverbank precinct.”

This is a strange turnaround from earlier Liberal Party comments that were critical of the shonky taxpayer handover of Festival Plaza to the Walker Corporation:



[Subscribe](#)[Past Issues](#)[Translate ▼](#)

"The Government needs to explain...." Vickie Chapman of the then-Liberal Opposition told "Today Tonight" back in 2015. The now-Liberal Government now has explaining of its own to do.

Very little of Tarntanya Wama ([Park 26](#)) remains as Park Lands after decades of attacks by successive Governments, alienating land for commercial, private uses. Now, it appears, this Park has not been disappearing fast enough for the newly-installed State Government.

The full story is behind the pay wall at The Advertiser. If you have a subscription you can read it [here](#).

We have asked for an explanation:



26 July 2018

Dear Mr Marshall

I was stunned to read in *The Advertiser* last weekend [20 July] quotes attributed to your Environment Minister who seemed to be suggesting that the State Government was targeting Park 26 in the Adelaide Park Lands for new commercial development.

I hope Mr Spiers has been misquoted. Please reassure me that it is not Liberal policy to further alienate this already greatly reduced part of our national-heritage listed Park Lands.

Kind regards

Shane Sody
President
Adelaide Park Lands Preservation Association

You too can contact the Premier here: <https://premier.sa.gov.au/contact>
or TAKE (other) ACTION: www.adelaide-parklands.asn.au/take-action

[Subscribe](#)[Past Issues](#)[Translate ▼](#)

Read about the Festival Plaza dodgy deal here: www.adelaide-parklands.asn.au/festival-plaza



Share



Tweet



Forward

PARK LANDS TARGETED FOR NEW WOMENS & CHILDRENS HOSPITAL



LEAKED SA Health plans reveal three sites in Adelaide's Park Lands are being considered as the site for a new Women's and Children's Hospital to avoid huge costs associated with acquiring land in the CBD.

On 30 July, The Advertiser published this graphic revealing three potential sites in [Park 27](#) that might be used for another new hospital. Apparently there is some clinical advantage in moving the Womens and Childrens Hospital into close proximity to the Royal Adelaide Hospital, which is on [Park 27](#).

In the diagram above, potential sites 1, 3 and 4 are all within [Park 27](#).

- Potential Site 1 is adjacent to the RAH on [Park 27](#).
- Potential Site 3 is the Thebarton Police Barracks on [Park 27](#)
- Potential Site 4 is Helen Mayo Park, in [Park 27](#), which has also been suggested in recent years for (a) a multi-storey hotel; or (b) a skate park; or (c) a commercial helipad. The Council's Community Land Management Plan for Helen Mayo Park is that it should remain Park Lands!
- Potential Site 2, the only identified site that is not on Park Lands, is the Newmarket Hotel.

If you have a News Limited subscription, you can read the full story [here](#).



Share



Tweet



Forward

[Subscribe](#)

[Past Issues](#)

[Translate ▼](#)

VIDEO OF THE MONTH - RYMILL PARK / MURLAWIRRAPURKA (Park 14)



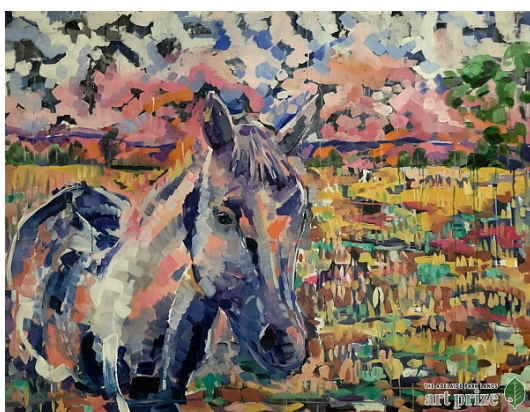
Rymill Park is known for its lake, picnic grounds, and rose garden, as well as the annual venue for "Gluttony" during the Fringe Festival. But did you know this Park hosted a rubbish dump until the late 1950's?

Catch up on any of our earlier Park videos at our YouTube channel:
https://www.youtube.com/channel/UCBBBQLY6as_sQv0BoQm69Rw/videos

We're gradually building, in numerical order, a video guide to all parts of the Adelaide Park Lands.

The next one, due for release in the September newsletter, will be **King Rodney Park / Ityamai-itpina (Park 15)**

ART PRIZE - WHO WILL BE THE "PEOPLE'S CHOICE"?

[Subscribe](#)[Past Issues](#)[Translate ▼](#)

Have you seen the ongoing display of 74 finalists in the Park Lands Art Prize, at the Adelaide Festival Centre? If not, do it soon. The exhibition closes on Sunday 26 August.

While you're there, spot the items that have a red sticker – meaning they'll be going to new homes once the exhibition is over on 26 August. Many have been sold so far, but there are still works available for sale.

And don't forget to vote in the People's Choice Award while you're visiting the exhibition.

The most popular work as voted by visitors will get a \$1,000 'People's Choice' Prize sponsored by the Royal Adelaide Show.

The 'People's Choice' prize award will be presented at 2.30 on Saturday 25 August, by Michelle Hocking, General Manager Royal Adelaide Show and Royal Adelaide Wine Show. <https://www.facebook.com/events/288787085206727/>

- Enter via main entrance along the Walk of Fame at Elder Park.
- Access via Riverbank Footbridge or King William Road.
- Closest undercover parking is Riverbank Car park

[Subscribe](#)[Past Issues](#)[Translate ▼](#)

office. Proceeds to the artists with a commission to APPA.

You can browse all 74 finalists here: <https://www.parklandsart.com/category/finalists-artworks/> but even better go to the Festival Centre to see them in the foyer there until 26 August.

For more details, visit <http://www.parklandsart.com/> or visit the Park Lands Art Prize Facebook page: <https://www.facebook.com/parklandsart/>

Pictured above

- Jason Cordero - *"The Conversant Grove"*
- Rebecca Achkar - *"The Passing of Time and Seasons – Horse in Lefevre Park"*
- Greg Johns - *"Near the Centre there is Music, 2017" (sculpture)*



Share



Tweet



Forward

RESIDENTS ASSOCIATIONS: CARE FOR PARKS & NEIGHBORHOOD



The City, North Adelaide, and the Park Lands are fortunate to have a number of resident and community associations that care for not only the Adelaide Park Lands but also their local built environs.

If you live in the City or in North Adelaide you should consider reaching out to your local group of fellow residents, such as:

- North Adelaide Society, Inc.
- South-East City Residents Association, Inc.
- South-West City Community Association, Inc. or
- West End Village Association, Inc.

Some of the above have Facebook groups.

Contact details for each of the above can be found here:

<https://www.cityofadelaide.com.au/your-community/community-development/community-groups/>

A fifth group, the Lower North Adelaide Residents Association is part-way through the process of getting recognised as an incorporated body. Contact: park9@internode.on.net



Share



Tweet



Forward

[Subscribe](#)[Past Issues](#)[Translate ▼](#)

WHAT'S ON IN THE PARK LANDS OVER THE NEXT FEW WEEKS

There are always events scheduled in the Park Lands, many of them free, and there are always opportunities to explore the Park Lands on your own, or with friends or family. Browse our '[Explore Parks](#)' pages for hints about interesting spots to visit. This month's featured opportunities are:



[Big Red Kidney Walk](#) – Saturday 9th September, 10am –12 noon. A 4.8 km walk starting from Elder Park, Tarntanya Wama ([Park 26](#)), raising funds to improve the lives of people living with kidney disease. Live music and entertainment, food and drink. Dogs on leads welcome. Click the pic for more details



[SALA Exhibition: SA Mammals lost from the Parklands](#) – Mon-Fri 9am–5pm, Sat 10am–4pm until 4 September at the South West Community Centre, Sturt street. Artist Kathleen Patitsas (a [finalist](#) in the current [Park Lands Art Prize exhibition](#)) is displaying framed and unframed artwork in various media (for sale). Free entry. Click the pic for details.



[Wild Explorers](#) – Saturday, September 1st, 8th, 15th and 22nd from 10.45 to 11.45am in bushland at the southern end of Victoria Park / Pakapakanthi (Park 16). Intended for curious and inquisitive kids (under age 6) who love spending time outdoors. Opportunities to play, explore and get a little messy. This might include building wodli (aka cubbys), climbing trees and balancing on logs. Fees apply. Click the pic for more details.

Subscribe

Past Issues

Translate ▼



Pakapakanthi (Park 16). Sunday 9th September. 8.30am for 9.00am start.

A relaxed free timed 3km – 5km event in the style of "parkrun" where you can test your fitness or progress. Click the pic for details.



[Lord Mayor's Park Lands Ramble](#) in Veale Park / Walyu Yarta (Park 21) and Golden Wattle Park / Mirnu Wirra (Park 21W) – Sunday 26 August 9am to 11am.

Click the pic for details. If you miss it, don't worry. There's something very similar four weeks later. See the next item!



[Guided walk through Veale Park / Walyu Yarta \(Park 21\)](#) Sun 23 Sept 2.00pm to 3.45pm. Gold coin donation. (Free for APPA members). Park 21 is more than just the beautiful Veale Gardens. It also hosts a treasured community garden, which is having an [open day celebration at the same time!](#) Children and dogs on leads most welcome. Meet at the entrance to Veale Gardens on South Tce opposite Owen St. Click the pic for details.



Share



Tweet



Forward

LIQUOR LICENSING OUTSIDE ADELAIDE OVAL – APPROVED



The Liquor Licensing Court has given its approval for the Adelaide Oval Stadium Management Authority (SMA) to extend its liquor license to at least one area outside the stadium.

Such use of Tarntanya Wama ([Park 26](#)) is not permitted in the City Council's Management Plan for Park 26, but that was not a relevant matter for purposes of the Licensing Court.

At a hearing on 8 August, the Licensing Court took notice of continuing objections by North Adelaide residents, but allowed the SMA to extend its liquor license to an area outside the Oval's East Gate.

Judge Gilchrist reserved his decision on another proposed expansion outside the Oval's North Gate and said he would try to make his decision quickly.

The new licensed area would be capped at between 200 and 500 people at a time and would be available only for people attending events at the Oval.

[Subscribe](#)[Past Issues](#)[Translate ▼](#)

Of course, there are many opportunities inside the stadium to purchase alcohol. The extension outside the stadium walls has been characterised as "putting a pub in the Park Lands."

If you have a News Limited subscription, you can read The Advertiser's story [here](#).



Share



Tweet



Forward

BRIEFLY, IN OTHER PARK LANDS NEWS



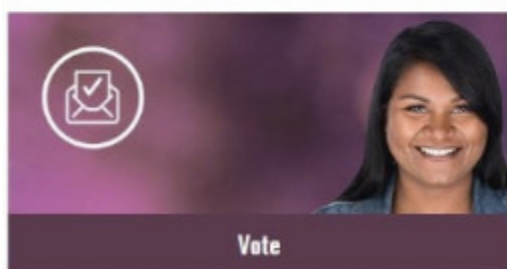
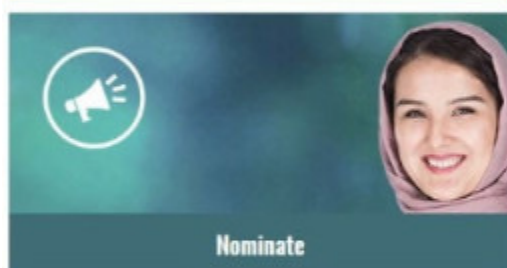
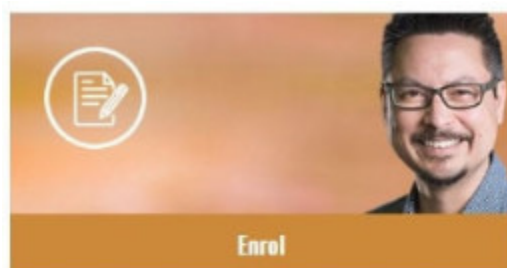
There's less than two months to go before the world turns its attention to Parks in Australia. The [International Parks and Leisure Congress](#), in Melbourne, October 14-17 will feature 75 sessions across five streams:

1. Future
2. Spaces
3. Places
4. Cities
5. Sport

One of the sessions will be devoted to the Adelaide Park Lands.

[Subscribe](#)
[Past Issues](#)
[Translate ▼](#)


planting has been carried out near the corner of Sir Donald Bradman Drive and West Terrace, in Ellis Park / Tampawardli ([Park 24](#)) Congratulations to the City Council gardeners who've been tending to these new seedlings!



Local Government elections

The Adelaide City Council, like all local governments in South Australia, will go into 'caretaker' mode in September, prior to local government elections in October–November.

As candidates lobby for your interest, we intend to cross-examine the City Council candidates on their attitudes to the Park Lands.

After nominations close on Tuesday 18th September, we'll send some questions to each of them, and report back to you in our October newsletter.



Disappointing lack of response from Premier or Minister

On 9 April 2018 we wrote to Minister Stephan Knoll (who has responsibility for the *Adelaide Park Lands Act 2005*) seeking a meeting. Read our letter to Minister Knoll [here](#).

On 12 May 2018 we wrote to the Premier regarding the former RAH site. Read our letter to the Premier [here](#).

At the date of this newsletter, neither the Premier nor the Minister had yet replied. A month ago, we sent polite reminders. Still nothing!

[Subscribe](#)[Past Issues](#)[Translate ▼](#)

commences. Are you on board?

Congratulations to more than 160 APPA members who've renewed their membership for the 2018-19 year and received their membership certificate.

We rely almost exclusively on annual membership fees to continue our Park Lands advocacy, so if you haven't already, please consider putting your money where your mouth is and backing APPA to keep up the Park Lands fight. Details here: www.adelaide-parklands.asn.au/membership

As a financial member of APPA, you get:

- the priceless satisfaction of supporting APPA's work;
- free participation in our [monthly guided Park Lands walks](#);
- eligibility to become a Park Ambassador and lead an annual [guided walk through one Park](#);
- the responsibility to help guide APPA's activities through the Annual General meeting; and
- a printable PDF membership certificate (see above).

PHOTOS OF THE DAY – RECENT HIGHLIGHTS

[Subscribe](#)

[Past Issues](#)

[Translate](#) ▼



[Subscribe](#)[Past Issues](#)[Translate ▼](#)

From the top:

- a) Walking through Lefevre Park / Nantu Wama ([Park 6](#)) off Robe Tce
- b) Relaxing in the Botanic Gardens, part of [Park 11](#)
- c) Family cycling through King Rodney Park / Ityamai-itpina ([Park 15](#))
- d) Running on the 'sweat track' in Victoria Park / Pakapakanthi ([Park 16](#))

The Park Lands 'photo of the day' series has been running since May 2014, and **the collection of Park Lands photos gathered over four years now numbers over 1,500**. We maintain (and gradually grow) more than 40 separate albums: one for each one of our 30 numbered Parks, six squares (and several albums for 'Alienations'). To find out more about any of these featured Parks, click the link to the Park number.


[APPA on Facebook](#)

[@adelparklands](#)

[APPA website](#)

[Our photos on Flickr](#)

[Our videos](#)

[Share](#)

[Tweet](#)

[Forward](#)

Subscribe

Past Issues

Translate ▼

[unsubscribe from this list](#) [update subscription preferences](#)

