

e-Gazette No. 046 - January, 2019. If this email doesn't look right
(e.g. if there are no pictures) then:

[View this email in your browser](#)

GOVERNMENT HOTEL PLANS APPARENTLY ILLEGAL – WHAT NOW?



In this newsletter:

- [A HOTEL AT ADELAIDE OVAL? – WHAT'S THE FUSS ABOUT?](#)
- [WHAT APPA IS DOING TO STOP A PRIVATE HOTEL IN PARK 26](#)
- [NOT JUST APPA – WHAT OTHERS ARE DOING AND SAYING](#)
- [WHAT WILL YOU DO? HERE'S HOW TO HELP](#)
- [RARE BUTTERFLY NOW BREEDING IN VICTORIA PARK](#)
- [VIDEO OF THE MONTH – PEPPERMINT PARK / WITA WIRRA \(Park 18\)](#)
- [HERITAGE ASSESSMENT FINALLY RELEASED](#)
- [WHAT'S ON IN THE PARK LANDS](#)
- [BEST OUTDOOR BASKETBALL COURTS](#)
- [AN ODE TO COLONEL LIGHT'S VISION](#)

[Subscribe](#)[Past Issues](#)[Translate ▼](#)

- [BRIEFLY, IN OTHER PARK LANDS NEWS](#)
- [PHOTOS OF THE DAY - RECENT HIGHLIGHTS](#)

A HOTEL AT ADELAIDE OVAL? - WHAT'S THE FUSS ABOUT?

In November 2018 the State Government announced it would be providing a \$42 million Government-guarantee of funding to permit the Stadium Management Authority to build a so-called "boutique" hotel in Tarntanya Wama ([Park 26](#)) in 2019.

The Government announcement claimed that the hotel design would not extend the "footprint" of the Oval stadium into the Park Lands. However, this claim ignores the fact that the entire stadium is on Park Lands. The proposed hotel would simply overhang Park Lands, now part of the Oval's external concourse.

Both the Stadium and the proposed hotel are within Tarntanya Wama ([Park 26](#)) of the Adelaide Park Lands.



Spot the difference between what the State Government is supporting and what you would certainly be prevented from doing, if you tried!

There is a growing wave of community activism, not only from APPA, to challenge the State Government's financial backing for this proposal.

But the fight is still in its early stages. Despite our 'black armband' rally on Saturday 5 January (more on that below) the Government's strategy is still to ignore the protests, and the many reasons we've given them to think again.

See below:

- What APPA is doing
- What other people are doing and saying
- What you can do

Subscribe

Past Issues

Translate ▼



Share



Tweet



Forward

WHAT APPA IS DOING TO STOP A PRIVATE HOTEL IN PARK 26

- We are running a petition: <https://www.change.org/p/premier-of-south-australia-no-pub-in-the-park> which in less than a month has attracted more than 640 signatures.
- On 31 December we [wrote to Adelaide Oval Minister, Stephan Knoll](#) and [Environment Minister David Speirs](#) urging a Government rethink.
- On 5 January, we held a “black armband silent rally” at Adelaide Oval (see TV coverage below) using black to symbolise the death of State Government respect for the Park Lands.
- On 9 January [we wrote to the Premier enclosing pictures of the rally](#).
- We have collected and [published on our website](#) and social media 23 reasons why the Government should re-think its commitment to this. (See examples below.)
- We have held informal discussions with some City Council members and the Environmental Defenders Office to try to ascertain whether legal action might be possible, or feasible.

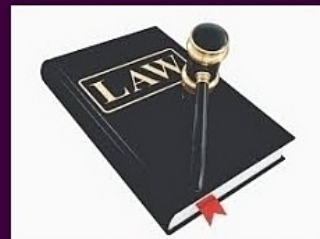
2. NOT FOR PUBLIC BENEFIT

The site “should be held for the public benefit of the people of South Australia” (That’s the law!) A hotel is for private benefit, not public.



13. INCONSISTENT WITH LAW

Being open 24/7 would make “hotel” the main use of the Oval. But the law says it must be mainly “a sporting facility”.



Subscribe

Past Issues

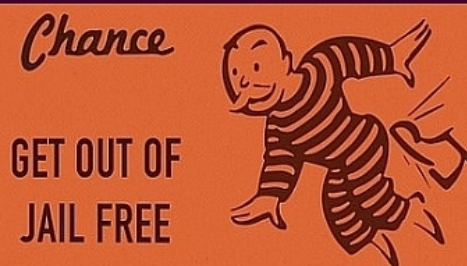
Translate ▼

17. EXCEEDING AUTHORITY

The SMA's Constitution says it exists to promote football and cricket. No powers to build or run hotels

**22. STILL IN THE SIN BIN**

After getting \$535 million, the law says the Oval can get no more financial assistance before Dec 2019



There are 23 reasons why the Government should re-think the proposal. These four above (just a sample) are the ones that tend to suggest the Government or the SMA (or both) may be acting illegally. For the full list of 23 reasons, see www.adelaide-parklands.asn.au/oval-hotel

As mentioned above, on Saturday 5 January we hosted a 'black armband' silent rally at Adelaide Oval. Here's how it was covered on TV news reports that evening:



Subscribe

Past Issues

Translate ▼

TV Coverage of APPA's rally on January 5th: Channels 9, 7 and the ABC



Pics of the rally taken by Debbie Williams

Find out more here:

www.adelaide-parklands.asn.au/oval-hotel



Share



Tweet



Forward

IT'S NOT JUST APPA - WHAT OTHERS ARE DOING AND SAYING

[Subscribe](#)

[Past Issues](#)

[Translate ▼](#)



As [we reported last month](#), the City Council (landlord of the Oval) voted unanimously on 11 December to tell the State Government that it should re-think its hotel proposal.

Last week, the Lord Mayor, Sandy Verschoor (pictured) advised APPA that *"We haven't given up the fight and are pursuing all possibilities."*

The Lord Mayor recently told *The Advertiser* that the Council had obtained legal advice about the Oval Hotel plans, and was seeking further advice.



A Select Committee of Parliament's Legislative Council (pictured) is examining [the "Redevelopment of Adelaide Oval"](#). The Committee's [terms of reference are very broad](#) and it's seeking public submissions by 1 February.

They want to hear from you. See the details below, under *"What Will You Do?"*



One of the first journalists to raise alarm bells about the Government's intentions was Rick Drewer of the *Gawler Bump*. In an [opinion article published on 5 December last year](#), Rick outlined many of the same concerns that APPA has since publicised, and others.

He suggested that both the Government and the Stadium Management Authority may well live to regret the proposal. Read [Rick Drewer's analysis here](#).

Subscribe

Past Issues

Translate ▼



has sparked the creation of a new community group, ParkForce SA.

<https://twitter.com/ParkForceSA>



In this week's Messenger newspapers, journalist Andrew Faulkner has taken up the fight, caustically highlighting that the Stadium Management Authority assumes its hotel will be built, despite the massive public disquiet that has erupted.

Read [Andrew Faulkner's column here.](#)



Deputy Lord Mayor, Cr Houssam Abiad (pictured) is running a public survey to gauge opinion on the proposed Oval Hotel.

You can take the survey at:
<http://survey.betteradelaide.com.au/zs/2HCs90>

Find out more at

www.adelaide-parklands.asn.au/oval-hotel



Share



Tweet



Forward

WHAT WILL YOU DO? HERE'S HOW TO HELP



The next step is up to you. The hotel will probably be built unless the Government hears directly from sufficient people to persuade it to change course.

A fallback option might be legal action to challenge the hotel in the courts. The hotel appears to be illegal in four different ways, as we have described above.

Pending legal advice, that option has not been ruled out. But that is a high-risk strategy and for now, YOU are the first line of defence. What can you do?

You can help by:

1. writing to the Premier and/or your local Member of State Parliament (especially Liberal MPs) and urge them to re-think the plan.

if you're not sure who your local Member is, refer to this map:

<https://www.ecsa.sa.gov.au/map> and this list of Members:
<http://www.parliament.sa.gov.au/Members/HouseofAssembly/Pages/List%20of%20Members.aspx>.

If you're not sure what to say, here's [a sample email that you can copy and paste into your own email](#), to your local MP.

2. writing (by the deadline of 1 February 2019) to the [Select Committee into the "Redevelopment of Adelaide Oval"](#). You can, if you wish, use the [sample email](#) or [our letter to the Premier](#) as a guide.
3. signing our petition: <https://www.change.org/p/premier-of-south-australia-no-pub-in-the-park>

[Subscribe](#)[Past Issues](#)[Translate ▼](#)[Share](#)[Tweet](#)[Forward](#)

RARE BUTTERFLY NOW BREEDING IN VICTORIA PARK

In [our newsletter of August 2018](#), we highlighted a number of threatened or vulnerable species that had been identified in the Park Lands in a recent biodiversity study.

One of the 250 species identified was the rare "chequered copper" or "grassland copper" butterfly, which has been found only in a small patch of remnant native grass in the centre of Victoria Park / Pakapakanthi ([Park 16](#)).



A community group "Friends of the Chequered Copper Butterfly" has been monitoring the butterfly and its habitat since last October.



The group was thrilled recently to see evidence of breeding there, with these five eggs spotted on a leaf of native oxalis.

[Subscribe](#)

[Past Issues](#)

[Translate](#) ▼



The group is now looking for more examples of this plant, where it co-exists with populations of this small black ant.

The ants nurture the butterfly larvae.

Photo credits:

1) Chris Chafer

treknature.com

2 & 3) Greg Coote

You can help the 'Friends of the Chequered Copper Butterfly' by contacting info@butterflyconservationsa.net.au



Share



Tweet



Forward

VIDEO OF THE MONTH - PEPPERMINT PARK / WITA WIRRA (Park 18)



Best-known as the site of the Himeji Japanese Garden, but also home to a different century-old garden, some very tall timber, newly-planted reed beds in the South Park

Subscribe

Past Issues

Translate ▼

Lands, and junior women's soccer. See for yourself....

Catch up on any of our earlier Park videos at our YouTube channel:
https://www.youtube.com/channel/UCBBBQLY6as_sQv0BoQm69Rw/videos

We're gradually building, in numerical order, a video guide to all parts of the Adelaide Park Lands.

The next one, due for release in the February newsletter, will be [Pelzer Park / Pityarilla \(Park 19\)](#) which includes a new community hub and dog park.



Share



Tweet



Forward

HERITAGE ASSESSMENT FINALLY RELEASED



Elder Park, 1940, looking south towards North Terrace

As we reported in [last month's e-Gazette](#), the State Heritage Council has recommended to the State Government that the Adelaide Park Lands be declared a State Heritage Area.

The decision was made after receiving a detailed heritage assessment from consultants, Dash architects. The assessment has now been publicly released.

The assessment is a comprehensive 91-page document that examines the history, features, and values of the Park Lands. Not surprisingly, the assessment finds that the Adelaide Park Lands DO meet most of the legal criteria for State Heritage

[Subscribe](#)[Past Issues](#)[Translate ▼](#)

The full assessment can be downloaded as a PDF file from this location:

<http://www.environment.sa.gov.au/files/sharedassets/public/heritage/her-gen-adelaide-park-lands-heritage-assessment.pdf>

NB: (it is a large file: 48 Mb)

On 28 December 2018, APPA wrote to two Government Ministers with responsibility for following up the recommendation made by the Heritage Council. You can read here, our

- [letter to Minister Spiers](#) and
- [letter to Minister Knoll](#).



Share



Tweet



Forward

WHAT'S ON IN THE PARK LANDS

There are always events scheduled in the Park Lands, many of them free, and there are always opportunities to explore the Park Lands on your own, or with friends or family. Browse our '[Explore Parks](#)' pages for hints about interesting spots to visit. This month's featured opportunities, in date order, are:



[Blooms in the Botanic Garden](#) – every day until sunset

Seasonal blooms in the Adelaide Botanic Garden ([Park 11](#)) at this time of the year include the sacred lotus flowers in the Nelumbo pond, and the dahlia garden (pictured)

[Click the pic for details](#)



[Tour Down Under Village](#) – Victoria Square / Tarntanyangga until 20 January 2019
Walk amongst the world's best cyclists and check out the latest cycling gear. Watch the team mechanics at work, test ride the newest bikes, watch the race on the big screen, check out the latest cycling equipment, be inspired and deck yourself out like the pros or simply sit back with fabulous food and wine. [Click the pic for details](#)

[Subscribe](#)

[Past Issues](#)

[Translate ▼](#)



[Mirnu Wirra \(Park 21W\)](#) Sunday 20 January 9.30 to 11.00am. Starting at the corner of West Tce & South Tce opposite Rydge's motel, we'll take in the historic Lundie Gardens, the Princess Elizabeth playground, the playing fields, native bush regeneration, and the Park's historic connection to an annual "Wattle Day". Children, and dogs on leads most welcome. Gold coin donation (free for APPA members) Click the pic for details.



[Kumangka, Mukapainga, Tampinga – Together, Remember, Recognise.](#) 24 to 28 January. Elder Park, Tarntanya Wama (Park 26)

Acknowledging, remembering and recognising, further thanking Aboriginal people who have contributed to our community, Elder Park will be lit up with the faces of Aboriginal Ancestors and leaders. Click the pic for details.



[Phil Collins "Not Dead Yet" tour](#) – Adelaide Oval – Tarntanya Wama (Park 26)

Friday 25 January from 7pm

Click the pic for details.



[The Prodigy "No Tourists" Tour](#) – Sat 26 January

in Bonython Park / Tulya Wardli (Park 27)

Click the pic for details.



[Music In the Square](#) – Hindmarsh Square / Mukata Thursday 7 Feb, 12 pm – 2 pm featuring Paige Renee Court & Hannah Yates. Bring a packed lunch, grab something on the way or enjoy the delicious offerings of the street-food trucks. The City of Adelaide proudly celebrates Adelaide as a UNESCO City of Music.

Click the pic for details.

[Subscribe](#)

[Past Issues](#)

[Translate](#) ▼



(Park 27)

[Rudimental](#) - Sat 9 February

Click the pic for details.



[Adelaide Fringe Festival](#) - starts 15 February. Venues in the Park Lands include

- [Botanic Garden](#) in [Park 11](#)
- [The Garden of Unearthly Delights](#) - in Rundle Park / Kadlitpina ([Park 13](#))
- [Gluttony](#) - in Rymill Park / Murlawirrapurka ([Park 14](#))

Click the pic for full program details



Share



Tweet



Forward

BEST OUTDOOR BASKETBALL COURTS

[Subscribe](#)[Past Issues](#)[Translate ▼](#)

Enjoying the outdoor basketball court in Mary Lee Park (Park 27B) off Park Tce near Bowden

Fancy throwing a ball around and shooting some hoops, with your friends or family?

The on-line newspaper "[Broadsheet Adelaide](#)" has identified seven of the best outdoor basketball courts in metropolitan Adelaide.

Five of the seven are in the Adelaide Park Lands, including the one pictured above. The others are in Parks [15](#), [19](#), [20](#) and [Whitmore Square](#).

See their review here:

<https://www.broadsheet.com.au/adelaide/active/article/hoop-dreams-seven-outdoor-basketball-courts-around-adelaide>



Share



Tweet



Forward

AN ODE TO COLONEL LIGHT'S VISION



Goodbye lovely parklands it was really nice to know you.
 If the hotel don't affect you,
 The cars will surely get you.
 Your lovely garden outlook,
 with numerous shady places,
 The freshness of your air and reflective resting spaces.
 We know it's best for you as water's very expensive,
 But carparks make us plenty and tariffs make us pensive.
 It should not now surprise you
 it started with a ruse,
 With tall "retractable" lights
 of little local use.
 We had to please our 'fans'
 and wooed them with a bridge,
 Now we have the Stands
 the rest is just a smidge.
 Although the trees do please
 they're only fun for some.
 Cut the buggers down
 and let us feel the sun.
 When the job is done we'll all be having fun,
 Will we ever wonder who ran off with a sum?
 Upon the hill the old man points to show his famous vision,
 Now he stands alone

[Subscribe](#)[Past Issues](#)[Translate ▼](#)

Among this looming scorn
 we need an asphalt cover,
 to rid this blooming lawn and watch the final over.
 Goodbye lovely parklands you've been in real good hands,
 Now its up to others so bloodyminded crazy
 upon your dwindling lands.

Words and photo by APPA member Richard Webb



Share

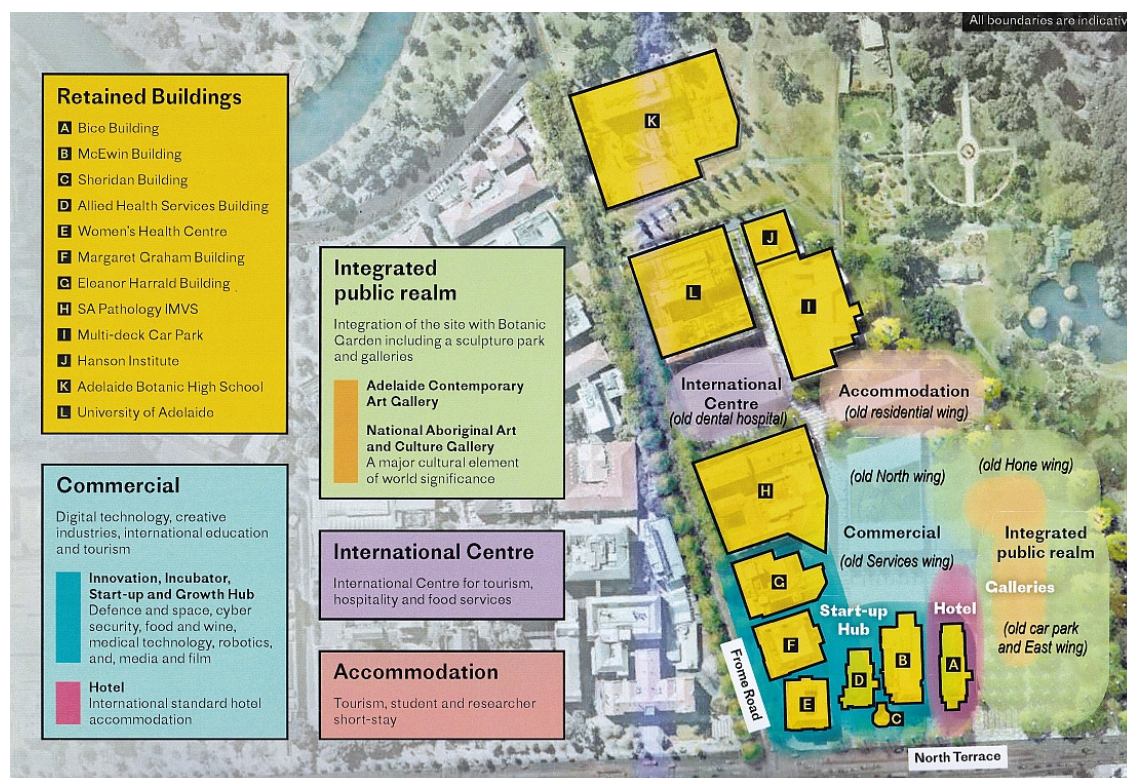


Tweet



Forward

A GREEN CORRIDOR?



As we pointed out in [last month's e-Gazette](#), one of the biggest disappointments of 2018 was the State Government's decision that absolutely NOTHING of the former Royal Adelaide Hospital site would be returned to [Park 11](#).

This 2018 decision was probably the greatest lost opportunity in the history of the Park Lands.

later than 7 March 2019, describing how the old RAH site could be returned to Park Lands. This is a requirement of section 23 of the *Adelaide Park Lands Act 2005*:

23—Steps regarding change in intended use of land

- (1) If land within the Adelaide Park Lands occupied by the Crown or a State authority is no longer required for any of its existing uses, the Minister must ensure that a report concerning the State Government's position on the future use and status of the land is prepared within the prescribed period.
- (2) A report under subsection (1) must include information on the condition of the land and on the action (if any) that would be required in order to make the land suitable for public use as park lands.

Presumably this will be an exercise for a junior bureaucrat, to prepare a report for the Minister's signature.

The Government has already determined to disregard any such report because it has endorsed the use of the land for a range of non-Park Lands purposes, as noted in its diagram above.

After issuing the mandatory report, we expect that the Government will then tick the box and claim "compliance" with the law because it has prepared and issued a (useless) report.

We have forlornly come to the realisation that the Government is determined to maintain buildings over the entire 7-hectare site of the old RAH despite its status as Park Lands. Nevertheless, there is a slight chance of salvaging something to belatedly recognise the existence of Park Lands in the vicinity.



The South-East City Residents Association has [written to the Premier](#) (PDF, 749k) urging him to include at least a green corridor, or continuation of the Park Lands trail for pedestrians and cyclists, to link Rundle Park / Kadlitpina ([Park 13](#)) with Mistletoe Park / Tainmuntilla ([Park 11](#)) along the River Torrens; something like the route depicted above.

(The route can't go through the Botanic Garden because it's closed after sunset.)

APPA endorses SECRA's suggestion, and considers it is the very least that the State Government could do, given the status of the former RAH as Park Lands, part of [Park 11](#).



Share



Tweet



Forward

BRIEFLY, IN OTHER PARK LANDS NEWS

[Subscribe](#)
[Past Issues](#)
[Translate ▼](#)


[iconic trees](#)

Thanks to Stephanie Richards of *InDaily* for putting together a look at some of the most notable trees within the Adelaide Park Lands. How many of them do you know and could recognise? APPA was glad to have been able to contribute a couple of photos from [our Flickr photo album](#). Click the pic to read the article.



[Proposal to repeat Skating at Victoria Square this winter?](#)

It might seem strange in the middle of a heat wave, but the City Council is seeking your view about whether the temporary skating rink that was installed last winter in Victoria Square, should go ahead again this coming winter. Feedback is requested by 30 January. Click the pic for details about how you can have your say.



[Subscribe](#)[Past Issues](#)[Translate ▼](#)

Late last year, the City Council called for submissions about proposals for an upgrade of community facilities in Golden Wattle Park / Mirnu Wirra ([Park 21W](#)). (This is the park where we are holding [a Guided Walk next Sunday morning](#)).

APPA has [made a 4-page submission](#) supporting the general thrust to "encourage utilisation of Park 21W for a wide range of community sports, conservation and casual activities such as walking, cycling and picnicking."

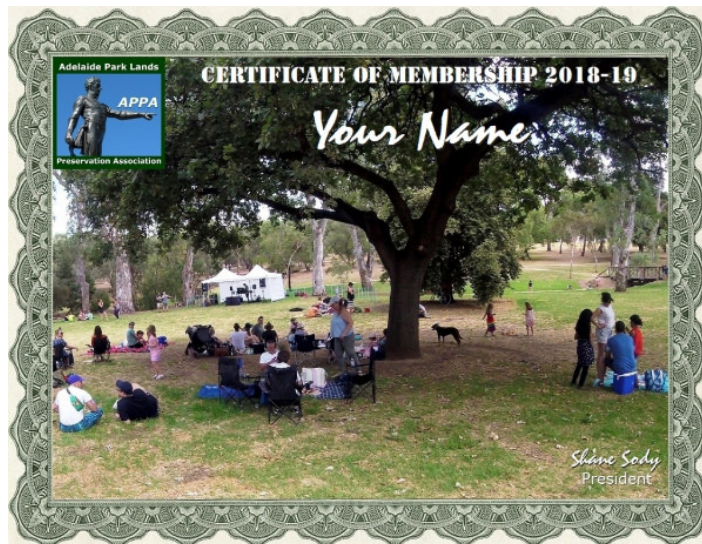
However we have raised concerns about parts of the Council's proposals, i.e.

- the proposed size and scope of a proposed new building;
- the proposed expansion of car parking; and
- lease and licencing negotiations.

Read our submission here:

<http://archives.adelaide-parklands.asn.au/Submissions%20and%20Letters/Submission%20Park%2021W%20-%20v2.pdf>

....and see the site on our [Guided Walk, next Sunday morning](#).



Feeling great at half the normal price!

If you'd like to dip your toe in the water and find out how good it feels to be a paid-up Park Lands supporter, now is your chance at minimal cost.

At this time of year there are two membership choices: a short term (six-month) membership, or a longer-term (18 month) membership.

Half-year concession memberships cost as little as \$7.50.

We rely almost exclusively on annual membership fees to continue our Park Lands advocacy, so if you haven't already, please consider putting your money where your mouth is and backing APPA to keep up the Park Lands fight. Details here: www.adelaide-parklands.asn.au/membership

As a financial member of APPA, you receive:

- the priceless satisfaction of supporting APPA's work;
- free participation in our [monthly guided Park Lands walks](#);
- eligibility to become a Park Ambassador and lead an annual [guided walk through one Park](#);
- the responsibility to help guide APPA's activities through the Annual General Meeting; and
- a printable PDF membership certificate (see above).

[Subscribe](#)

[Past Issues](#)

[Translate](#) ▼

PHOTOS OF THE DAY - RECENT HIGHLIGHTS



[Subscribe](#)

[Past Issues](#)

[Translate](#) ▼



From the top:

- a) Adelaide Comets soccer training in Ellis Park / Tampawardli ([Park 24](#))
- b) Festive lights in [Whitmore Square / Tangkaira](#)
- c) FOMO music festival in Elder Park, Tarntanya Wama ([Park 26](#)) on Sunday 6 January)
- d) Jogging along the River pathway in Grundy Gardens, Red Gum Park / Karrawirra ([Park 12](#))
- e) Tree climb adventure course in Blue Gum Park / Kurangga ([Park 20](#))

The Park Lands 'photo of the day' series has been running since May 2014, and **the collection of Park Lands photos gathered over more than four and a half years now numbers over 1,700**. We maintain (and gradually grow) more than 40 separate albums: one for each numbered Park and Square, along with several albums for 'Alienations'. Contributions are very welcome! To find out more about any of these featured Parks, click the link to the Park number.



[APPA on Facebook](#)



[@adelparklands](#)



[APPA website](#)



[Our photos on Flickr](#)



[Our videos](#)



Share



Tweet



Forward

Copyright © Adelaide Park Lands Preservation Association, Inc. [2015] All rights reserved.

[unsubscribe from this list](#) [update subscription preferences](#)

