

Subscribe

Past Issues

Translate ▼

e-Gazette No. 047 - February, 2019

**IF THIS EMAIL IS NOT DISPLAYING
PROPERLY**
(e.g. if there are no pictures) **THEN CLICK TO:**

[View this email in your browser](#)

GOVERNMENT WITH HEAD IN SAND ABOUT OVAL HOTEL



In this newsletter:

- [**OVAL HOTEL - TAXPAYER PRESSURE BUILDING**](#)
- [**WHICH BANK IS MAKING IT POSSIBLE?**](#)
- [**SELECT COMMITTEE INQUIRY**](#)
- [**IT'S UP TO YOU**](#)
- [**STORMWATER WETLAND COMING TO VICTORIA PARK**](#)
- [**VIDEO OF THE MONTH - PELZER PARK/PITYARILLA \(Park 19\)**](#)
- [**YOUR FACE + 15 SECONDS on SCREEN = FREE iPad**](#)
- [**LEASING AND LICENSING SPORT IN PARK 17**](#)
- [**WHAT'S ON IN THE PARK LANDS**](#)
- [**LETTERS FROM KNOLL = NULL**](#)
- [**LAST RITES FOR THE PONTOON**](#)
- [**TREES REDUCE SUMMER HEAT**](#)
- [**NEW PUBLIC ART MEMORIAL COMING TO PARK 12**](#)

Subscribe

Past Issues

Translate ▼

- [BRIEFLY, IN OTHER PARK LANDS NEWS](#)
- [PHOTOS OF THE DAY - RECENT HIGHLIGHTS](#)

TAXPAYER PRESSURE BUILDING

As more and more reasons emerge to wreck the credibility of the State Government's plan for a private hotel in Tarntanya Wama ([Park 26](#)) the Government still shows no signs of listening.

In November 2018 the State Government announced it would be providing a \$42 million Government-guarantee of funding to permit the Stadium Management Authority to build a so-called "boutique" hotel attached to the Adelaide Oval, like a leech.

Since then, APPA has catalogued 28 reasons (with more emerging regularly) why the Government should re-think.

1. IT'S PARK LANDS

The Oval and its concourse are both part of Tarntanya Wama (Park 26) and the hotel would be built directly over that paved part of the Park Lands.



20. UNSOLICITED BID

The State Gov't ignored its own rules for assessing "unsolicited bids"



Subscribe

Past Issues

Translate ▼

25. ANCILLARY?

If a hotel is OK because it's "ancillary" to the stadium, why not a supermarket as well?



26. THREATS

SMA links women's footy funding to hotel - or else!



There are now at least 28 reasons why the Government should re-think the proposal. For the full list of 28 reasons, see www.adelaide-parklands.asn.au/oval-hotel



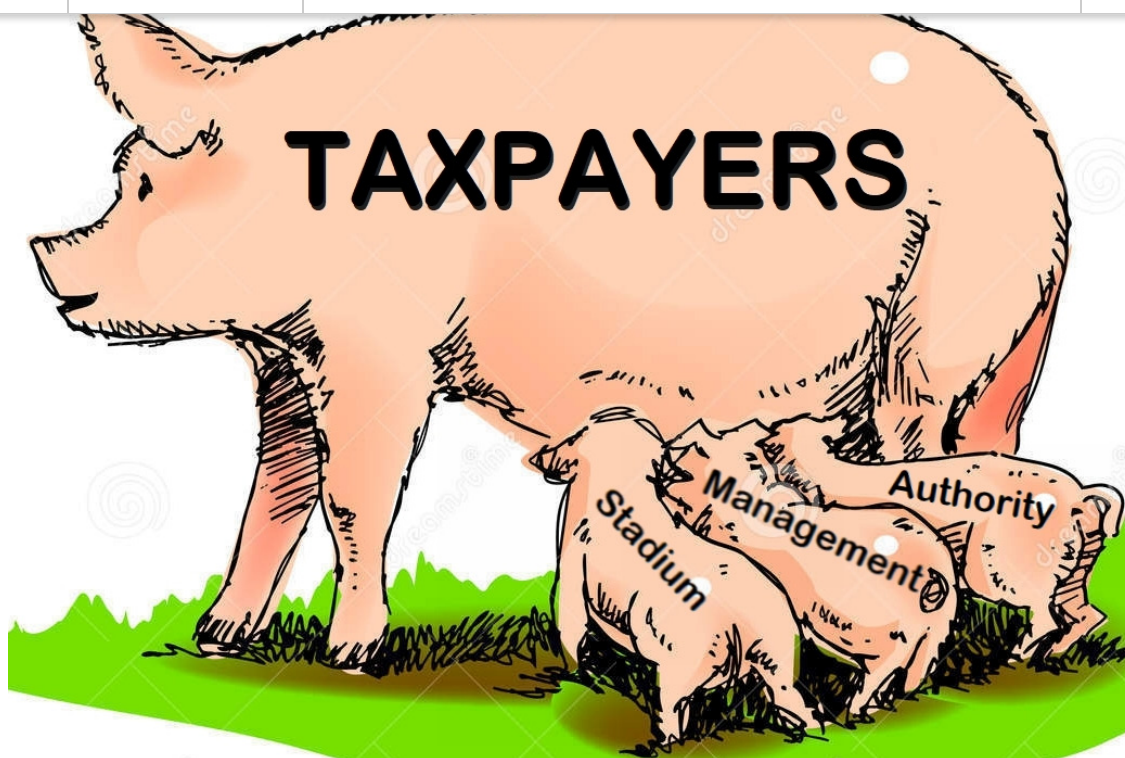
In its public statements on the issue, the Government seems not to have heard.

It's been ignoring nearly all of these 28 reasons, demonstrating only that it has been captured by the well-paid "suits" at the Stadium Management Authority.

Subscribe

Past Issues

Translate ▼



It would seem that the Government has no inclination (yet) to wean the bloated Stadium Management Authority off the public teat.

there's no shortage of hospitality expertise at the SMA.

The five hospitality managers are part of a 17-person executive staff being paid an average \$184,600 each. To run a sports ground. A sports ground that's drawing the biggest crowds in its nearly 150-year history, to reap \$85 million a year – but still lose money. Yes, there's more fingers in the (expensive) Adelaide Oval pie – the AFL clubs, the SANFL, the SACA – but it seems extraordinary that the joint can't make a quid.

+++++

Thanks to Andrew Faulkner (Messenger columnist) for digging out this gem of information.

(Extracted from his column on 13 February 2019)

++++++

No wonder the SMA needs more income from a hotel. It's so hard to make ends meet these days in the stadium management business.

[Subscribe](#)

[Past Issues](#)

[Translate](#) ▼



Share

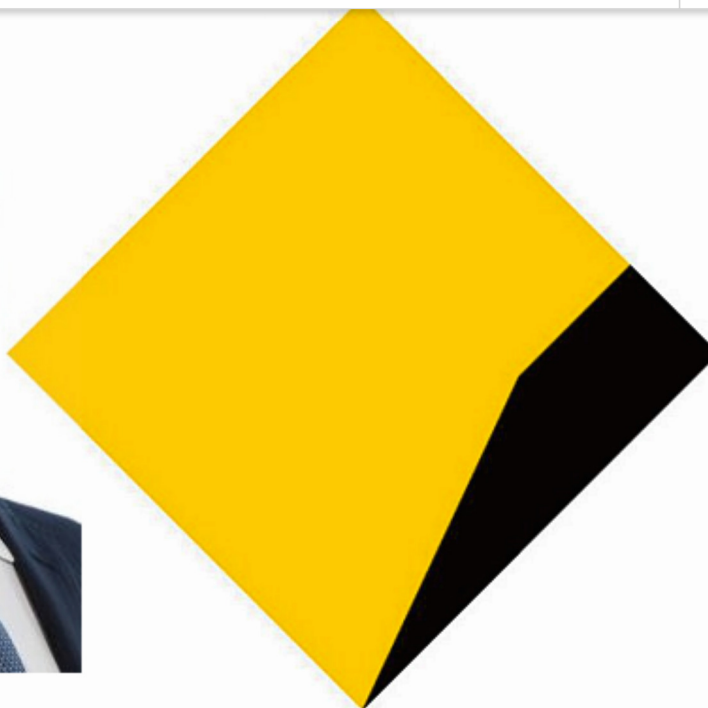


Tweet



Forward

WHICH BANK IS MAKING IT POSSIBLE?

[Subscribe](#)[Past Issues](#)[Translate ▼](#)

Gradually, more details about the Oval Hotel plans are being drip-fed to the public. At first, in November 2018, the State Government said taxpayers would provide a loan, because no private bank could be involved.

It later emerged that the State Government was prevented by law from funding the hotel until December 2019. Section 8 of the *Adelaide Oval Redevelopment and Management Act 2011* prevents further taxpayer support to the Oval (beyond the \$535 million it's already received) until 1 December 2019.

In the meantime, the Commonwealth Bank is set to provide bridging finance until the legal ban expires on 1 December this year.

However, it appears that the Commonwealth Bank has ignored its own '[Group Environment Policy](#)' in lending to the Stadium Management Authority.

APPA has [written to the Chief Executive of the Commonwealth Bank, Matt Comyn](#) (pictured, above) asking how this bridging finance can be reconciled to the Bank's own '[Group Environment Policy](#)'. (Spoiler alert: it can't be reconciled).

Coming straight after the report of the Banking Royal Commission, this would appear to be another 'own goal' by one of Australia's largest banks. In effect, the bank is aiding an attack on a key part of Adelaide's National Heritage-listed asset in exchange for some quick bucks.



Share



Tweet



Forward

Subscribe

Past Issues

Translate ▼

SELECT COMMITTEE INQUIRY



A Select Committee of Parliament's Legislative Council (pictured) is examining **the "Redevelopment of Adelaide Oval"**. The Committee's **terms of reference are very broad**

After receiving dozens of submissions, the Committee has commenced public hearings.



At the Committee's first public hearing, on Tuesday 5 February, **Lord Mayor Sandy Verschoor (pictured) described the proposed hotel** as the "expansionist ambitions of a greedy and opportunistic stadium management authority."

Ms Verschoor went on: "If they actually need this hotel development to balance their books, what happens in five or eight years time when their books aren't balanced again? Are they going to build a shopping centre?"

APPA made a written submission to the Select Committee's inquiry and we are awaiting an invitation to give evidence.

You can read our submission [at this link](#).

Find out more at

www.adelaide-parklands.asn.au/oval-hotel



Share



Tweet



Forward

Subscribe

Past Issues

Translate ▼

IT'S UP TO YOU



The next step is up to you. The hotel will probably be built unless the Government hears directly from sufficient people to persuade it to change course.

A fallback option might be legal action to challenge the hotel in the courts. But that is a high-risk strategy and for now, YOU are the first line of defence. What can you do?

You can help by:

1. writing to the Premier and/or your local Member of State Parliament (especially Liberal MPs) and urge them to re-think the plan.

if you're not sure who your local Member is, refer to this map:

<https://www.ecsa.sa.gov.au/map> and this list of Members:
<http://www.parliament.sa.gov.au/Members/HouseofAssembly/Pages/List%20of%20Members.aspx>.

If you're not sure what to say, feel free to cite any or all of [our 28 reasons](#). To make it easy, here's [a sample email that you can copy and paste into your own email](#), to your local MP.

2. signing our petition: <https://www.change.org/p/premier-of-south-australia-no-pub-in-the-park>
3. writing to the Commonwealth Bank CEO, Matt Comyn, asking him why his Bank is helping to jeopardise Park 26 of the Adelaide Park Lands. (See the story above.) Use [our letter to Mr Comyn](#) as a model if you wish.

Subscribe

Past Issues

Translate ▼

www.adelaide-parklands.asn.au/oval-hotel



Share



Tweet



Forward

STORMWATER WETLAND COMING TO VICTORIA PARK



For several years, there have been suggestions that a wetlands/stormwater basin might be constructed in the southern portion of Victoria Park / Pakapakanthi (Park 16).

The suggestion is moving closer to reality, with plans that were put before the Adelaide Park Lands Authority on 24 January.

The plans have twin aims – to reduce flood risk and also improve the ecological conditions including water quality along the course of the South Park Lands Creek.

The plans have been drawn up by the The Brown Hill and Keswick Creeks Stormwater Board.

It's expected the plans will be released for public consultation shortly, after gaining in-principle support from the Park Lands Authority.

You can see diagrams and read details of the plans at this link:
https://dmzweb.cityofadelaide.com.au/agendasminutes/files08/Agendas/APA/2019/2019_01_24APA.pdf

Subscribe

Past Issues

Translate ▼

This clump of white poplar trees would be removed as part of the plans. The trees were planted in 1953 on the northern side of the creek to reduce flooding because at the time, the area was poorly regarded as a swamp.

More recently this has been recognised as a mistake because poplars are known as an invasive species that have a negative effect on wetland systems in particular.



Share



Tweet



Forward

VIDEO OF THE MONTH - PELZER PARK / PITYARILLA (Park 19)



Best-known as the site of the Marshmallow Playspace, but also home to several soccer fields, and a new dog park. This park is also a key part of Adelaide's cycling history. See for yourself....

We're gradually building, in numerical order, a video guide to all parts of the Adelaide Park Lands.

Catch up on any of our earlier Park videos (Park 1 through to Park 18) by following the links at www.adelaide-parklands.asn.au/explore-parks

The next one, due for release in the March newsletter, will be [Blue Gum Park / Kurangga \(Park 20\)](#) which includes well-loved BMX tracks, and the new Tree Climb adventure course.

Subscribe

Past Issues

Translate ▼



Tweet



Forward

YOUR FACE + 15 SECONDS ON SCREEN = FREE IPAD

We want YOUR passion – in 15 seconds or less – and we're offering a new 6th-generation iPad wifi, 128 Gb, silver. (Retail price \$599) to entice you. Facing any video camera, just tell us either:

- "Why I love the Park Lands"; OR
- "Why I love this Park" (that I'm in).

Upload your micro-video to Facebook, Instagram, Youtube or any other platform

[Subscribe](#)

[Past Issues](#)

[Translate ▼](#)

Closing date: Friday 29 March 2019



12 finalists

will each win an APPA Retro fleecy picnic blanket 170 x 130 cm (valued at \$40) and their clips will each be included in an APPA video "Adel Park Lands Love" to be released in mid-April (in the April newsletter).



Main prize

From these 12 finalists, the best entry of all will win a new 6th-generation iPad wifi, 128 Gb, silver. (Retail price \$599)

<https://www.apple.com/au/shop/buy-ipad/ipad-9-7/128gb-silver-wifi>

Judging - the criteria

- Don't describe a Park - just say why you LOVE it. It's about you, your emotions and your passion! Choose your words carefully.
- Judges will be looking for words and passion that will inspire others to love the Park Lands too.
- The clip can't be any longer than 15 seconds. Anything longer is automatically ineligible to be a finalist. Edit or re-record it, if necessary.
- The sound and picture has to be clear. We need to see you facing the camera and hear what you're saying.
- Preferably shoot the clip in a Park Lands setting (an area you love!) but another background can be used if you prefer.

The Judges

The shortlist of 12 finalists will be determined by APPA's WOMADelaide stall organising sub-Committee. Members of this sub-Committee and their immediate families are ineligible for prizes.

The final winner will be decided by majority vote at APPA's Annual General Meeting on 28 April 2018 after a screening of the finished video, featuring all finalists.

Subscribe

Past Issues

Translate ▼



DO IT at WOMAdelaide

The APPA stall at WOMAdelaide would be a great location to record your video clip.

If you're coming to WOMAdelaide, (Friday 8th to Monday 11th March) pop over to our stall, say hi.

One of our volunteers will hold your camera, if you like, while you record your **#adlparklandslove** clip!

www.adelaide-parklands.asn.au/love-parklands



Share



Tweet



Forward

LEASING AND LICENSING SPORT IN PARK 17



Many of the Parks within the Adelaide Park Lands contain sports fields that are

[Subscribe](#)[Past Issues](#)[Translate ▼](#)

same groups.

The difference between leasing and licensing is that *leased* buildings are locked and essentially private, while the *licensed* playing areas are still available for public use and enjoyment when the licensees are not using them.

Many sporting groups and clubs have been taking good care of their licensed areas for decades – in some cases for more than a century. However the City Council is going through an appropriate process, calling for expressions of interest, to see whether any new or different organisations might like to take over or share in leasing or licensing of various Park sports facilities.

Over the past two years or so, this process has been undertaken for facilities in Parks 2, 20 and 21W among others.

Now the Council is looking at Carriagway Park / Tuthanga ([Park 17](#)).

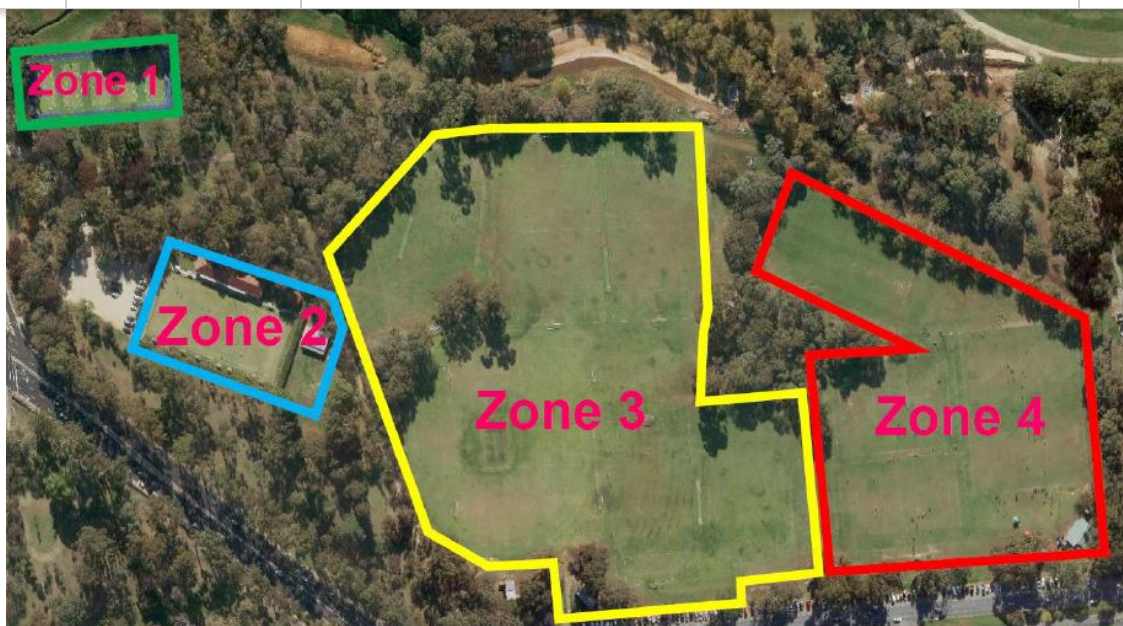


There are four areas in this Park that are licenced to different groups: Christian Brothers College, the SA Croquet Association, and Pembroke College. There are also some sub-leases and sub-licenses to other groups such as the Touch Football Association.

Subscribe

Past Issues

Translate ▼



APPA welcomes this process, which is consistent with transparent good governance. It also marks an opportunity to ensure that new licenses and leases are consistent with the public interest in maintaining Parks (and facilities within Parks) for broad public usage.

Expressions of interest for Carriageway Park / Tuthanga ([Park 17](#)) close on 22 February.

More details are available here: <https://yoursay.cityofadelaide.com.au/COA-EOI>



Share



Tweet



Forward

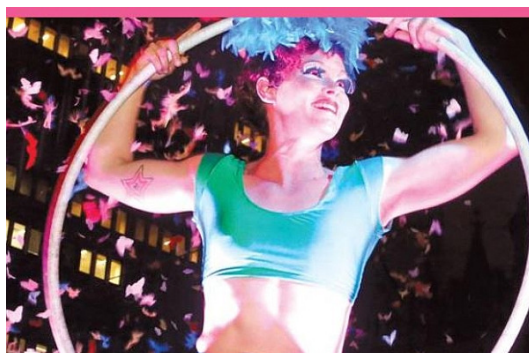
WHAT'S ON IN THE PARK LANDS

There are always events scheduled in the Park Lands, many of them free, and there are always opportunities to explore the Park Lands on your own, or with friends or family. Browse our '[Explore Parks](#)' pages for hints about interesting spots to visit. This month's featured opportunities, in date order, are:

Subscribe

Past Issues

Translate ▼



Botanic Park.

- Thurs 14th Feb: "Crazy Stupid Love" (M)
- Fri 15th Feb:: "Mary, Queen of Scots" (MA15)
- Sat 16th Feb: "Mary Poppins Returns" (G)
- Sun 17th Feb: "Vox Lux" (CTC)

Click the pic for details

Adelaide Fringe Festival – 15 February to 17 March. Venues in the Park Lands include

- [Botanic Garden](#) in [Park 11](#)
- [The Garden of Unearthly Delights](#) – in Rundle Park / Kadlitpina ([Park 13](#))
- [Gluttony](#) – in Rymill Park / Murlawirrapurka ([Park 14](#))

Click the pic for full program details

Guided walk through G.S. Kingston Park / Wirrarninithi (Park 23) Sunday 24 Feb 9.30

to 11.30am. The Park with a split personality: half-park, half-cemetery. Explore the wetland with hidden trails, bushland and bronze animal sculptures. Then, learn about some strange SA History with famous gravesites, and rare bush tucker plants. Dogs on leads are most welcome. Bring the kids! Gold coin donation requested. (Free for APPA members). Wear sturdy shoes. Meet at the corner of West Terrace and Wylde Street (opposite Wright Street). Click the pic for details.

Park Lands History – Until the end of February: Mondays & Wednesdays 11am to 12pm at North Adelaide Library, and Thursdays from 3.30pm to 5pm at City Library.

One on one opportunities to learn about Park Lands sites and share your personal memories of them.

Click the pic for details

[Subscribe](#)

[Past Issues](#)

[Translate ▼](#)



- 27 February 8.30am to 11.00am in Park 11, including Botanic Gardens, Botanic Park, and Mistletoe Park /Tainmuntilla. Meet at the 'Friends Gate' in Plane Tree Drive. Walk will be cancelled if the forecast top temp is 32 degrees or higher. Click the pic for details.



[Free Yoga class](#)

Wellington Square / Kudnartu Every Saturday 6pm to 7pm
Wondered if Yoga was all about twisting like a pretzel? Ever attempted a few classes only to feel overwhelmed by all the downward dogs and Pranayamas? Simply looking for peace of mind, a balanced body and a step towards a better life? Click the pic for details.



[WOMADelaide](#) - Botanic Park (Park 11)
Friday 8th March to Monday 11th March, in Botanic Park (Park 11). The world music festival. Click the pic for details.

(NB: There will be an APPA stall again this year at WOMADelaide - please pop in and say 'hi'.).



LETTERS FROM KNOLL = NULL

Subscribe

Past Issues

Translate ▼



the *Adelaide Park Lands Act 2005* is the Minister for Transport, Infrastructure and Local Government, the Hon. Stephan Knoll, MP.

APPA wrote to Minister Knoll [on 9 April 2018](#) to congratulate him on his election and success in being appointed as a Minister. We also asked for a meeting to canvas his support for amendments to strengthen legal Park Lands protection, and also asking for support for possible World Heritage listing.

We sent a reminder letter on 17 July 2018, which was copied to both the Premier and the Member for Adelaide, Rachel Sanderson. After those letters, we had a meeting with one of the Minister's advisers on 24 September 2018.

A further letter followed [on 28 December 2018](#), urging action on declaring the Park Lands a State Heritage Area, as recommended by the State Heritage Council on 6 December 2018.

The total of Ministerial replies to these letters = null. None.

We asked last week for any comment from the Minister's office and in a phone call we were told that:

- possible amendments to the *Adelaide Park Lands Act 2005* as suggested by APPA have not been ruled in or out, but remain under consideration;
- Heritage listing of the Park Lands as recommended by the State Heritage Council, cannot be actioned until/unless Minister Knoll receives formal advice from the Environment Minister, David Speirs (which had not yet arrived); and
- any potential support for World Heritage listing is not being actively considered at this stage, pending a decision first on State Heritage listing.



Share



Tweet



Forward

LAST RITES FOR THE PONTOON



APPA congratulates the City Council for finally determining to rid the River Torrens of a corporatised eyesore that has blighted the river for more than two years.

The pontoon was installed in the River Torrens adjacent to Elder Park in Tarntanya Wama ([Park 26](#)) in time for the 2017 Adelaide Festival. The Council's approval in 2016 was conditional upon the pontoon being removed after the 2017 Festival.

However, later in 2017 the Council agreed to let it stay on for another two years. This year, the Adelaide Festival tried to convince the City Council to let the pontoon remain for another two years.

Fortunately, the Council, at its meeting on Tuesday 12 February, did not agree. It was a unanimous decision that the pontoon must be gone by 30 April.

This is consistent with what seems to be a very welcome policy of the new Council to resist commercial takeover of Park Lands, and protect the value of public open space.



Share



Tweet



Forward

TREES REDUCE SUMMER HEAT

[Subscribe](#)[Past Issues](#)[Translate ▼](#)

Heat mapping undertaken across the metropolitan area has revealed the extent to which trees reduce heat.

The image above is just a small snapshot of a heat mapping tool provided by the Department of Environment and Water. It was taken during the day on 23 March last year, which was a mild day with a top temperature of only 21 degrees. It shows the area between North Terrace and North Adelaide, centred on the River Torrens. This includes multiple Parks from John E Brown Park ([Park 27A](#)) in the west to [Park 11](#) in the east.

The blue shading indicates cooler spots, and orange shows warmer places. Yellow is in-between. It's easy to see the predominance of blue within the Park Lands, compared to the yellow and orange in built-up areas. However, it's also notable that the more densely planted parts of the Park Lands are cooler than Park Lands sites that are open and cleared. The contrast is notable even between the densely planted and irrigated Botanic Garden and the comparatively open Botanic Park.

You can examine any other part of the metropolitan area at this link:

<http://spatialwebapps.environment.sa.gov.au/urbanheat/?viewer=urbanheat&runWorkflow=StartupResilientEast>



Share



Tweet



Forward

NEW PUBLIC ART MEMORIAL COMING TO PARK 12



This site in Red Gum Park / Karrawirra ([Park 12](#)) off Victoria Drive, opposite Kintore Avenue has been earmarked for a new memorial or public art work to

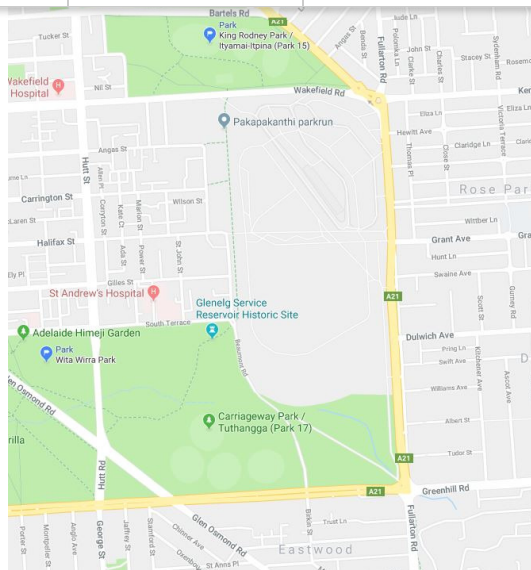
make to South Australia".

The Adelaide Park Lands Authority has approved this location, at the request of the Vietnamese Boat People Monument Association (VBPMA). This Association is backed by the Governor, His Excellency the Hon. Hieu Van Le AC, and the Hon. Tung Ngo, member of the Legislative Council.

The cost of \$510,000 is being fully funded by Adelaide's Vietnamese community. Design work is now being undertaken, and it's expected there will be public consultation later in the year.



BRIEFLY, IN OTHER PARK LANDS NEWS

[Subscribe](#)[Past Issues](#)[Translate ▼](#)

disappeared!

Google Maps provides a valuable resource to the world, but occasionally things go wrong.

In the past few days, Google has decided (for reasons known only to its own algorithms) that Victoria Park / Pakapakanthi ([Park 16](#)) has ceased to exist.

Its map shows all of Victoria Park greyed out, as if it was an urban area.

We can only speculate as to why this has occurred. Perhaps the current car racing grandstands and other infrastructure has triggered an automated Google response.

We have advised the Google robots to add a "new place" to its map – a Park.



'Thinking plants' on the 'Wood Wide Web'?

Can Trees Talk, Think and Heal? With thousands of trees surrounding Adelaide in the Park Lands, we owe it to them and to ourselves to find out!

The Hawke Centre at the University of SA (in co-operation with the WOMAdelaide Planet Talks Program) is showcasing the work of pioneering scientists Brian Pickles and Monica Gagliano as they uncover the fascinating hidden world of tree communication, plant cognition and the healing powers of forest bathing. Registration (free) [at this link](#).

[Subscribe](#)

[Past Issues](#)

[Translate ▼](#)



Rymill Car Park

Do you use this car park, in Rymill Park / Murlawirrapurka ([Park 14](#)) off Dequetteville Tce?

The City Council is seeking feedback on the changes it made (last October) to the parking controls in this spot. There is some tension between use of the car park by visitors to the Adelaide Bowling Club, and usage by the wider public. The Bowling club has 18 permits or "free parking" entitlements during the bowling season (October to March).

Comments are invited any time before 30 September 2019.

<https://yoursay.cityofadelaide.com.au/rymill-park-car>



Feeling great at half the normal price!

If you'd like to dip your toe in the water and find out how good it feels to be a paid-up Park Lands supporter, now is your chance at minimal cost.

At this time of year there are two membership choices: a short term (six-month) membership, or a longer-term (18 month) membership.

Half-year concession memberships cost as little as \$7.50.

We rely almost exclusively on annual membership fees to continue our Park Lands advocacy, so if you haven't already, please consider putting your money where your mouth is and backing

Subscribe

Past Issues

Translate ▼

parklands.asn.au/membership

As a financial member of APPA, you receive:

- the priceless satisfaction of supporting APPA's work;
- free participation in our [monthly guided Park Lands walks](#);
- eligibility to become a Park Ambassador and lead an annual [guided walk through one Park](#);
- the responsibility to help guide APPA's activities through the Annual General Meeting; and
- a printable PDF membership certificate (see above).

SAVE THE DATE.

APPA's Annual General Meeting. Sunday 28 April 2019 from 10am to midday.
More details in next month's newsletter

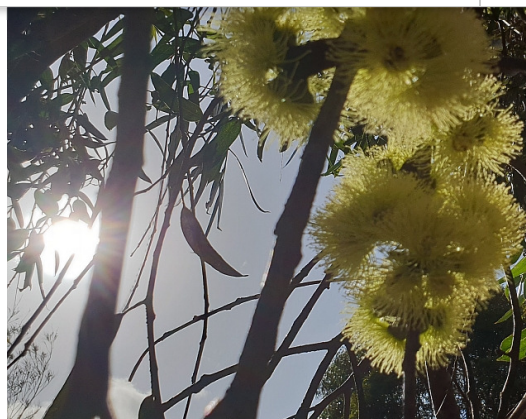
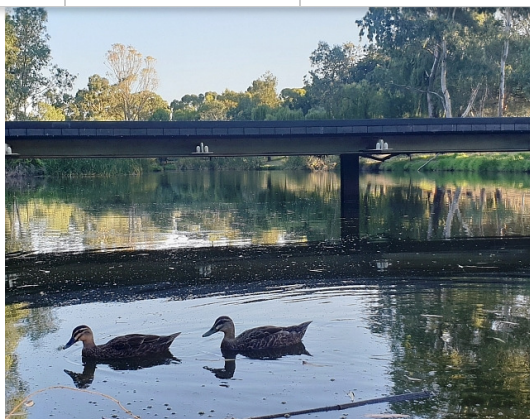
PHOTOS OF THE DAY - RECENT HIGHLIGHTS



Subscribe

Past Issues

Translate ▼



from the top:

- a) Himeji Japanese Garden in Peppermint Park / Wita Wirra (Park 18) ([Park 18](#))
- b) Black ducks on the River Torrens in John E Brown Park ([Park 27A](#))
- c) Eucalyptus blossom in Reservoir Park / Kangatilla ([Park 4](#))
- d) Soccer training on University playing fields in Red Gum Park / Karrawirra ([Park 12](#))
- e) Playing in the irrigation spray in Bullrush Park / Warnpangga ([Park 10](#)) off Mackinnon Pde

The Park Lands 'photo of the day' series has been running since May 2014, and **the collection of Park Lands photos gathered over more than four and a half years now numbers over 1,750**. We maintain (and gradually grow) more than 40 separate albums: one for each numbered Park and Square, along with several albums for 'Alienations'. Contributions are very welcome! To find out more about any of these featured Parks, click the link to the Park number.



APPA on Facebook



@adelparklands



APPA website



Our photos on Flickr



Our videos

Subscribe

Past Issues

Translate ▼



Share



Tweet



Forward

Copyright © Adelaide Park Lands Preservation Association, Inc. [2015] All rights reserved.

[unsubscribe from this list](#) [update subscription preferences](#)



mailchimp